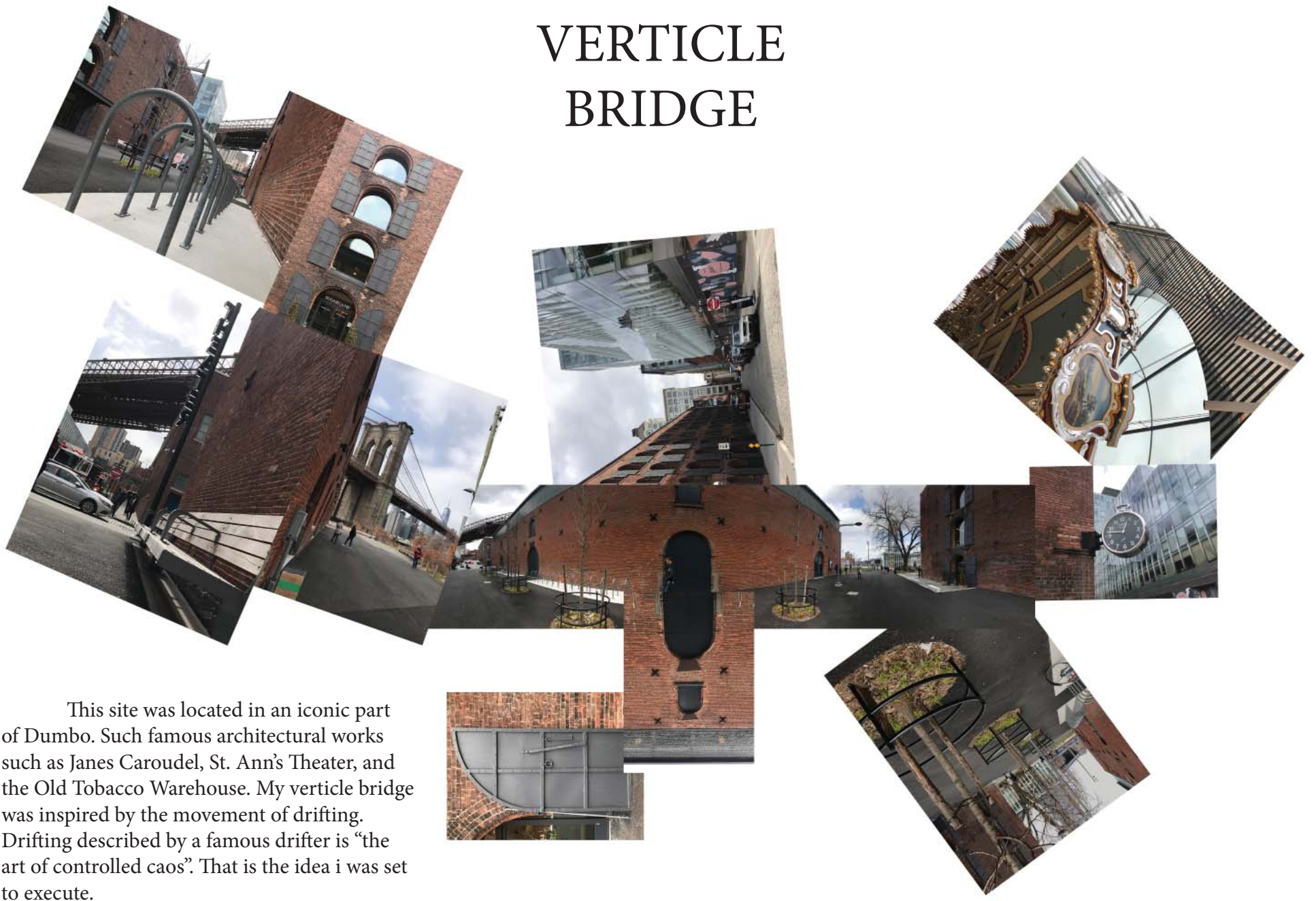
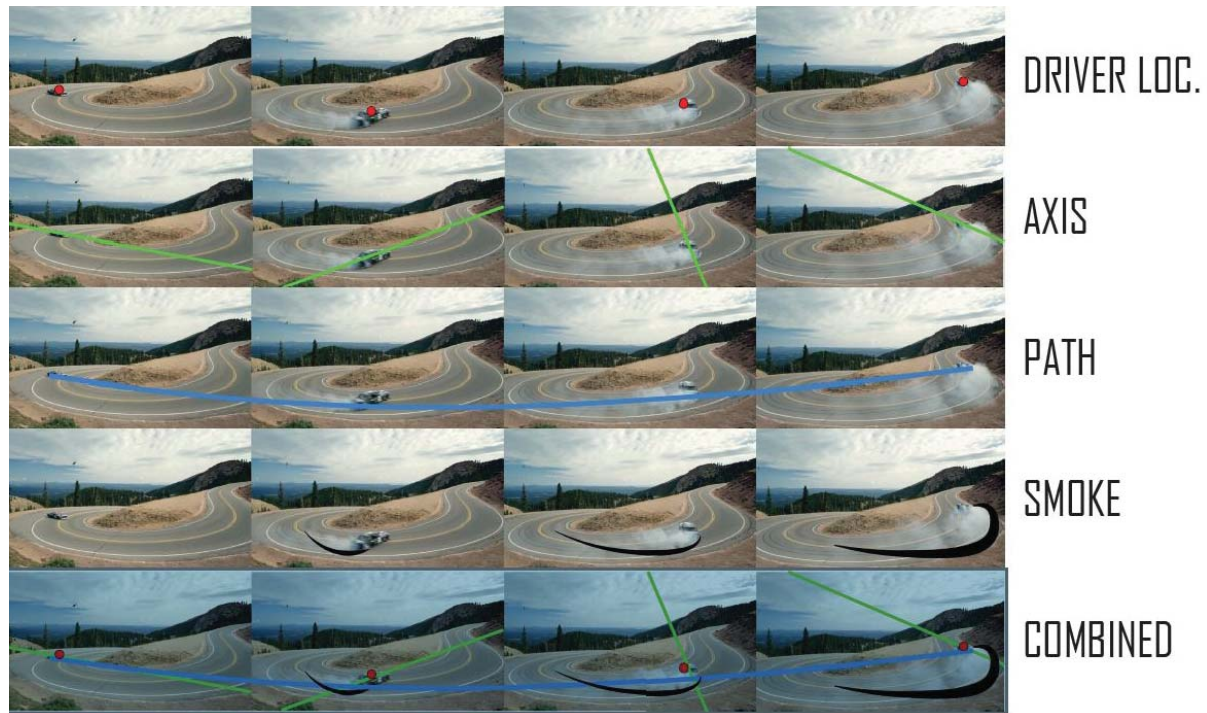


VERTICLE BRIDGE



This site was located in an iconic part of Dumbo. Such famous architectural works such as Janes Caroude, St. Ann's Theater, and the Old Tobacco Warehouse. My verticle bridge was inspired by the movement of drifting. Drifting described by a famous drifter is "the art of controlled caos". That is the idea i was set to execute.

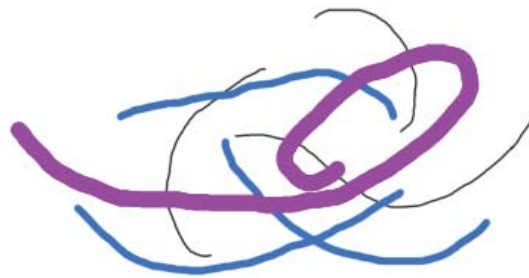
MOVEMENT DIAGRAM



ABSTRACT DIAGRAM



AGGRESIVE



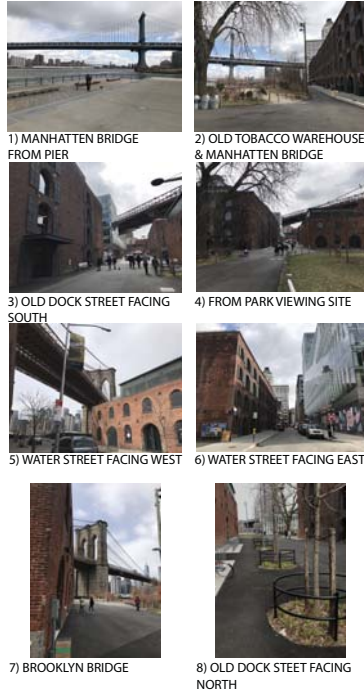
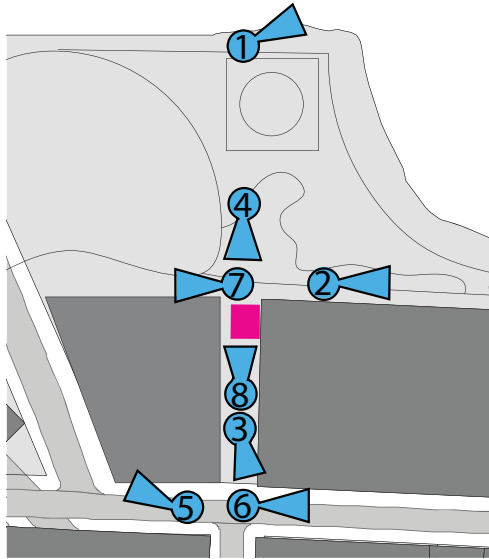
SMOOTH



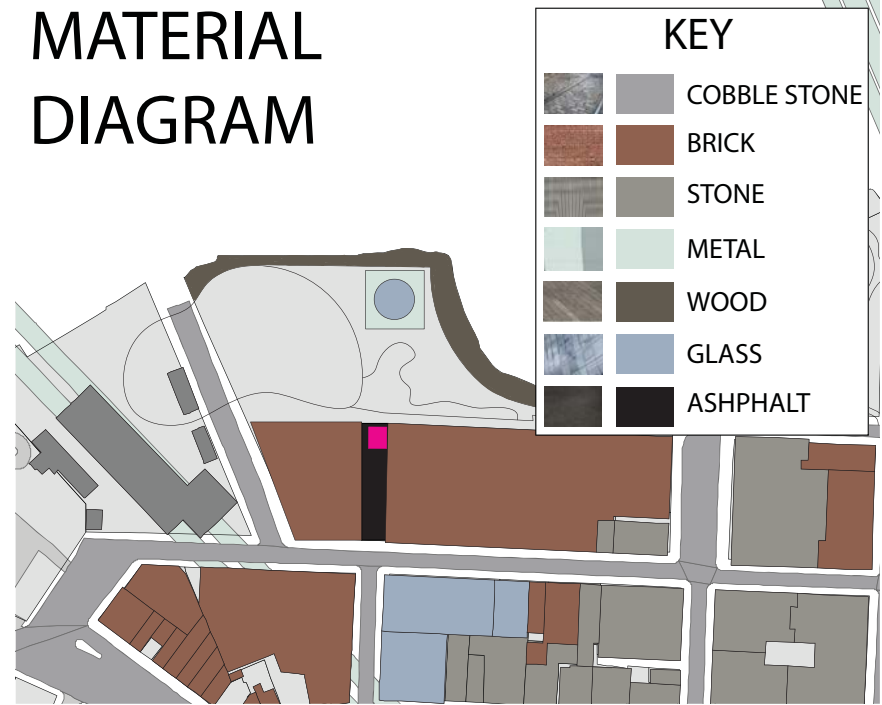
STYLISH

DIAGRAMS

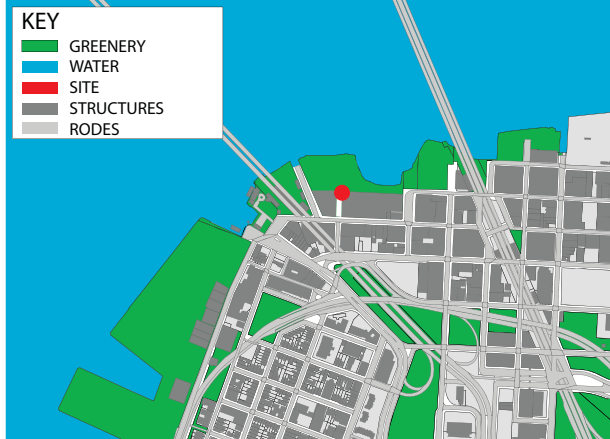
VIEW DIAGRAM



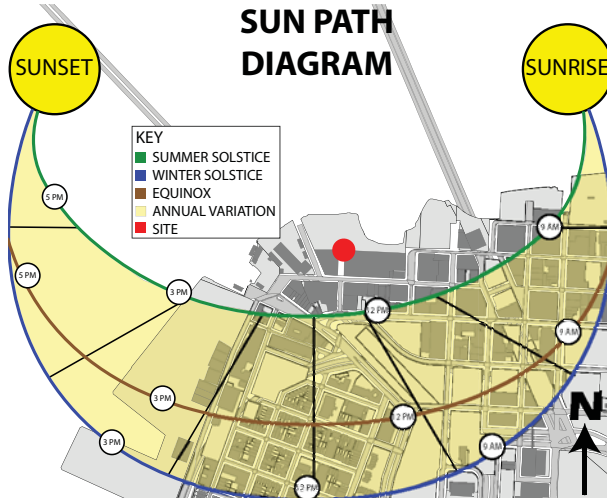
MATERIAL DIAGRAM



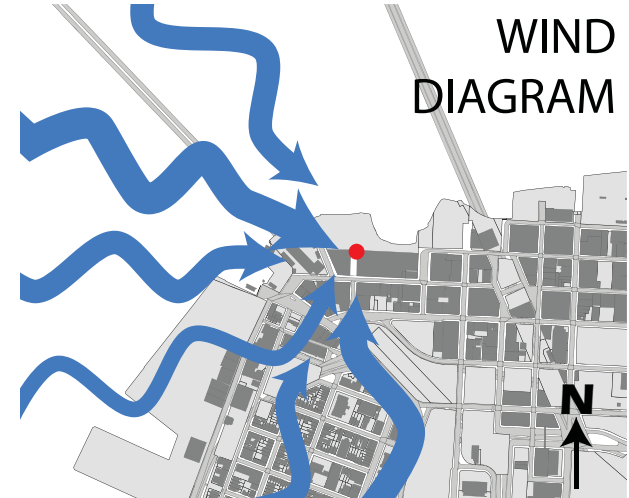
LANDSCAPE DIAGRAM

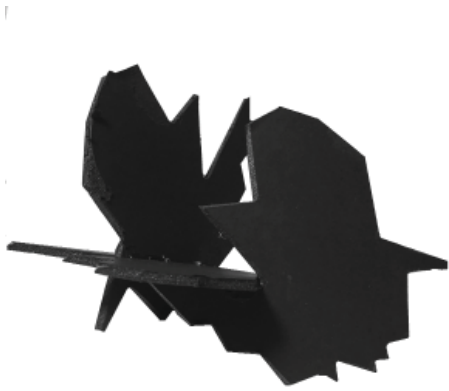
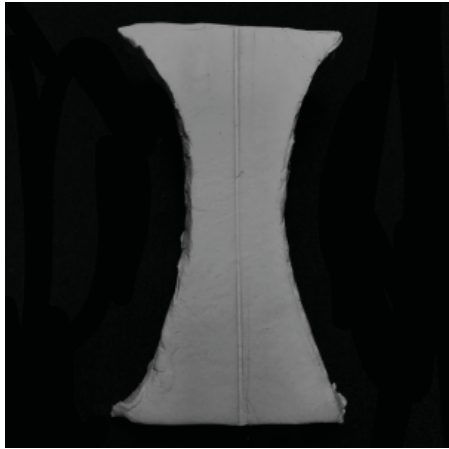


SUN PATH DIAGRAM

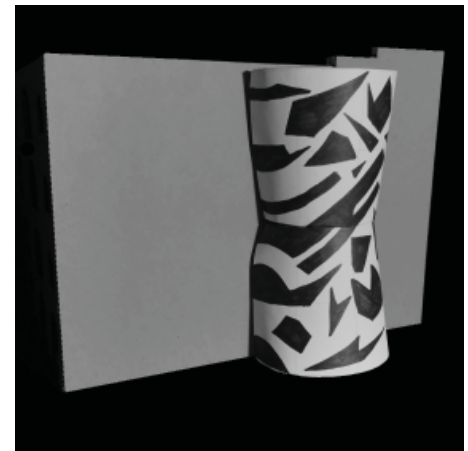
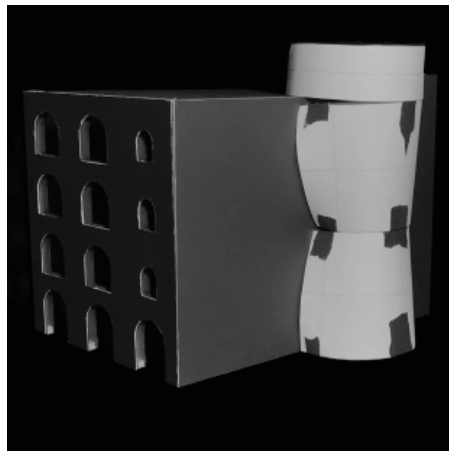


WIND DIAGRAM



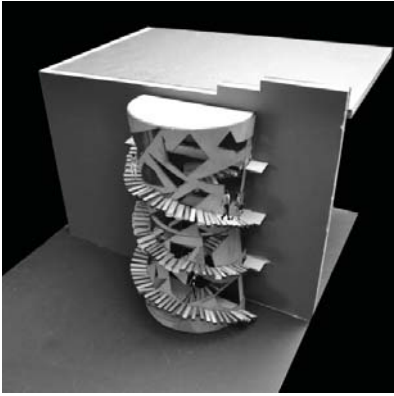


STUDY
MODELS

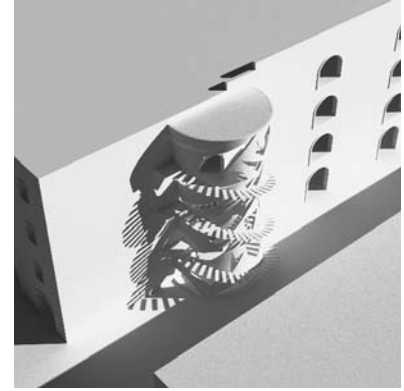


FINAL MODEL

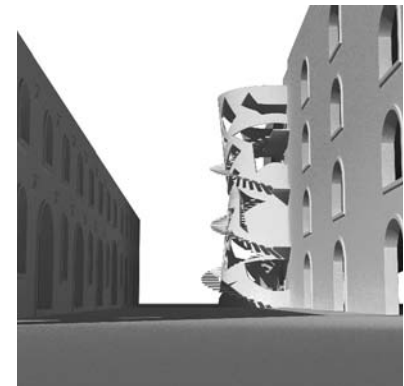
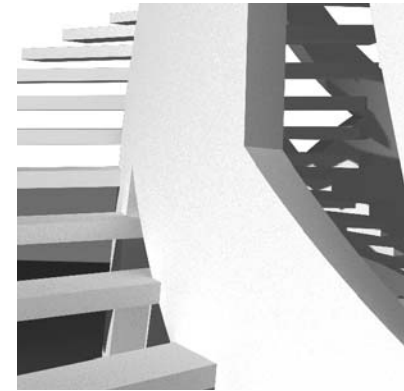
MODEL PHOTOS



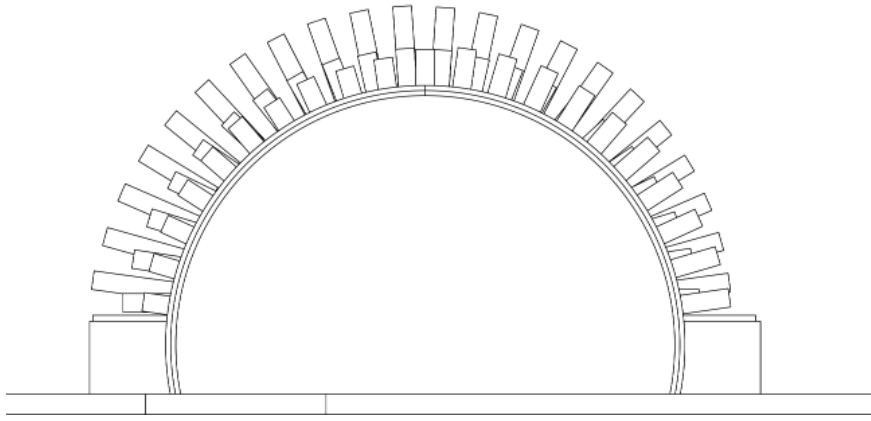
VRAY RENDERS



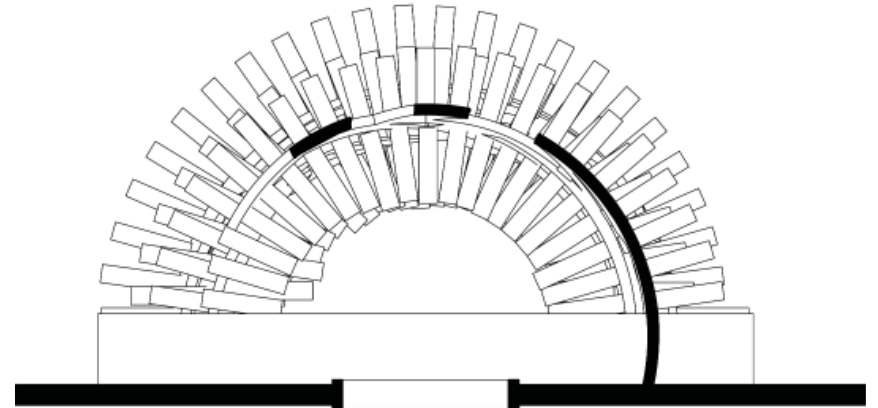
PHOTOMONTAGE



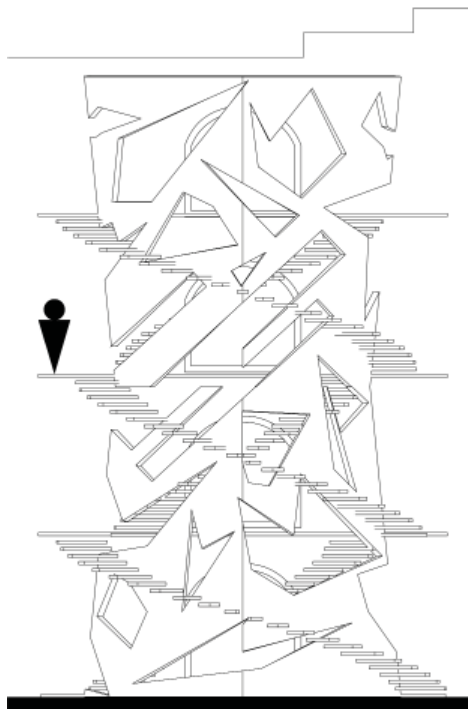
DRAWINGS



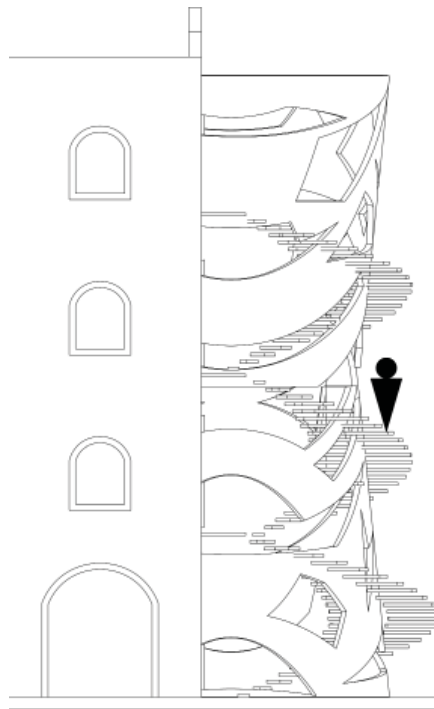
TOP VIEW



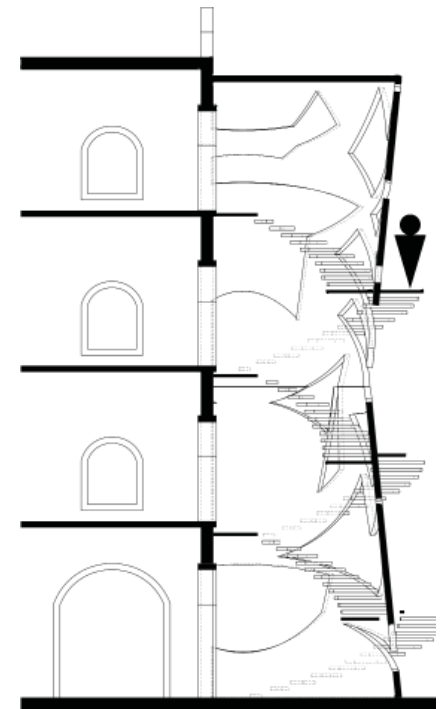
PLAN VIEW



WEST ELEVATION



NORTH ELEVATION



NORTH SECTION