

TABLE OF CONTENTS

Sheet Name	Sheet Number
FOUNDATION PLAN	A100.00
BASEMENT PLAN	A100.10
FIRST FLOOR PLAN	A200.00
SECOND FLOOR PLAN	A300.00
ROOF PLAN	A400.00
FRONT ELEVATION	A500.00
LEFT ELEVATION	A500.10
RIGHT ELEVATION	A500.30
REAR ELEVATION	A500.20
BUILDING SECTION	A600.00
WALL SECTION	A600.10
EXTERIOR WALL DETAILS	A600.20
ROOF DETAIL	A700.04
PLUMBING RISER DIAGRAM	M800.20
ELECTRICAL BASEMENT PLAN	E100.00
HEATING SYSTEM	M800.10
BALCONY SECTION	A600.11
BALCONY BONDS DETAIL	A700.02
BASEMENT WALL DETAIL	A600.21
FIRST FLOOR BOND DETAIL	A700.00
SECOND FLOOR BOND DETAIL	A700.01
COVER SHEET	A000.00
ELECTRICAL COVER	E000.00
ELECTRICAL FIRST FLOOR PLAN	E200.00
ELECTRICAL THIRD FLOOR PLAN	E300.00
BASEMENT HEATING PLAN	M800.11
FIRST FLOOR HEATING PLAN	M800.12
SECOND FLOOR HEATING PLAN	M800.13
BALCONY FLOOR DETAIL	A700.03



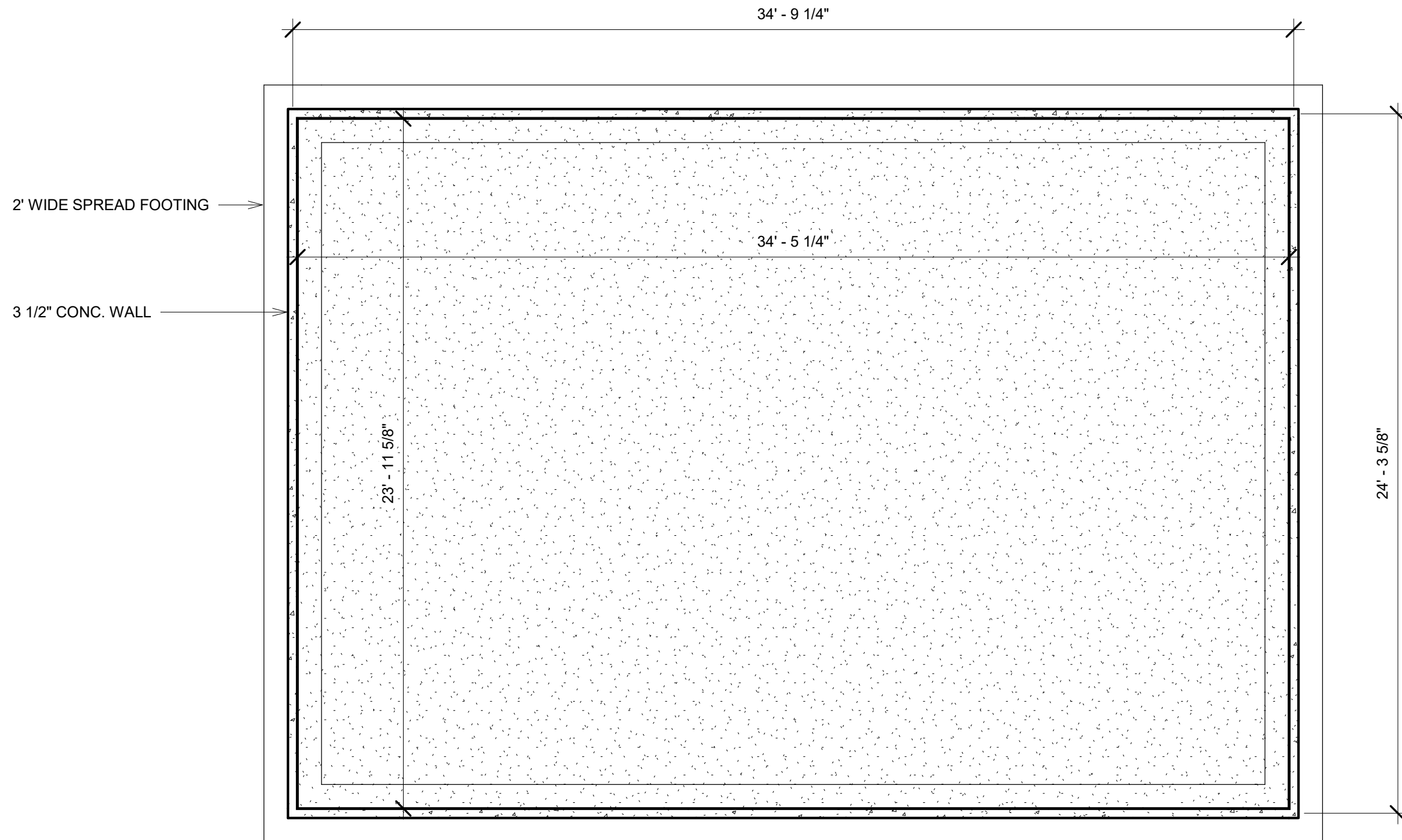
www.autodesk.com/revit

RESIDENTIAL HOUSE

No.	Description	Date

COVER SHEET

Project number	1	A000.00
Date	Issue Date	
Drawn by	AQIB BHATTI	
Checked by	ROBERT BRYCE	
		Scale



② FOUNDATION
1/4" = 1'-0"



www.autodesk.com/revit

RESIDENTIAL HOUSE

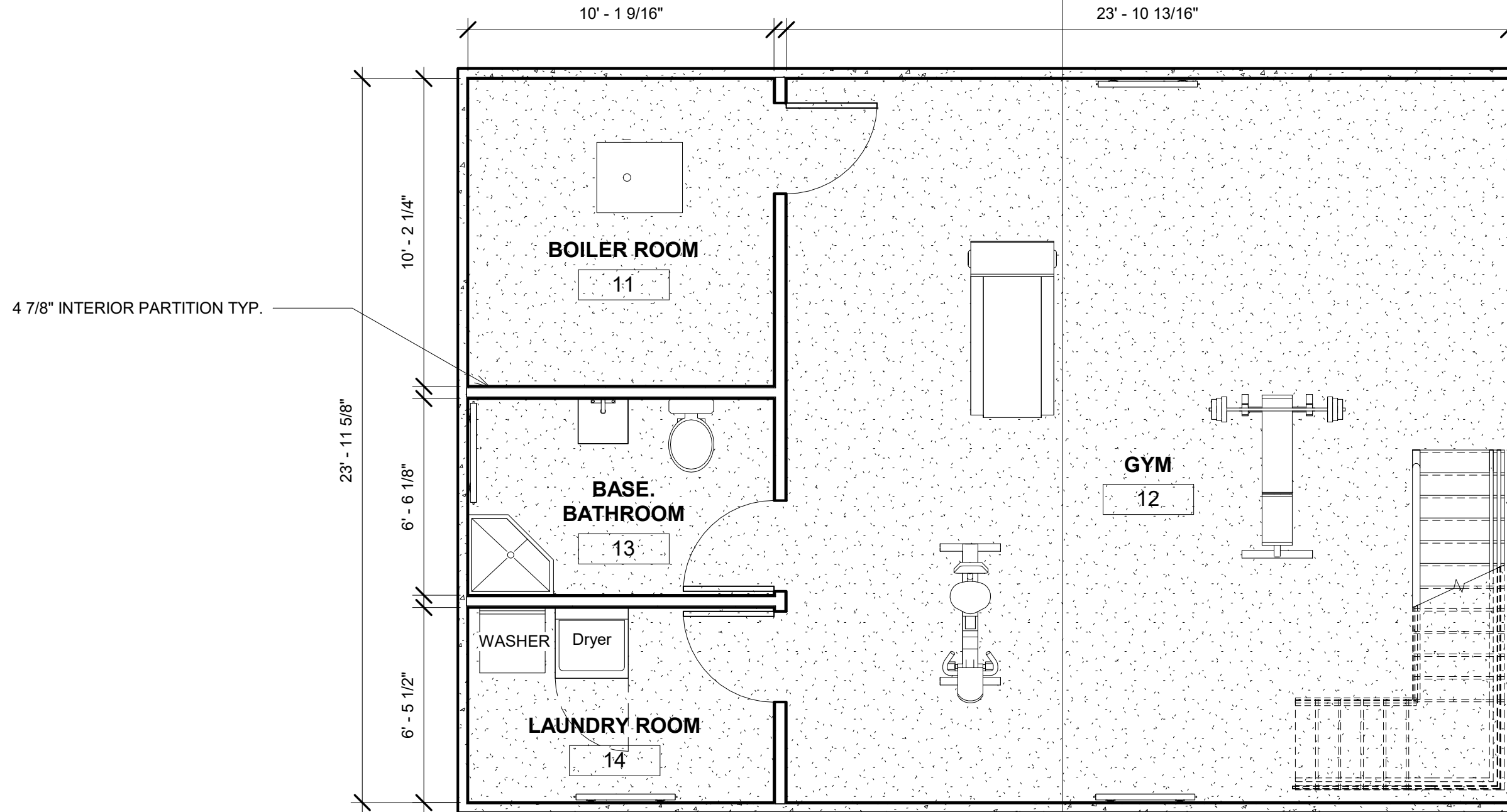
No.	Description	Date

FOUNDATION PLAN

Project number	1
Date	Issue Date
Drawn by	AQIB BHATTI
Checked by	ROBERT BRYCE

A100.00

Scale 1/4" = 1'-0"



4 7/8" INTERIOR PARTITION TYP.

1 BASEMENT
1/4" = 1'-0"

1
A600.00



www.autodesk.com/revit

RESIDENTIAL HOUSE

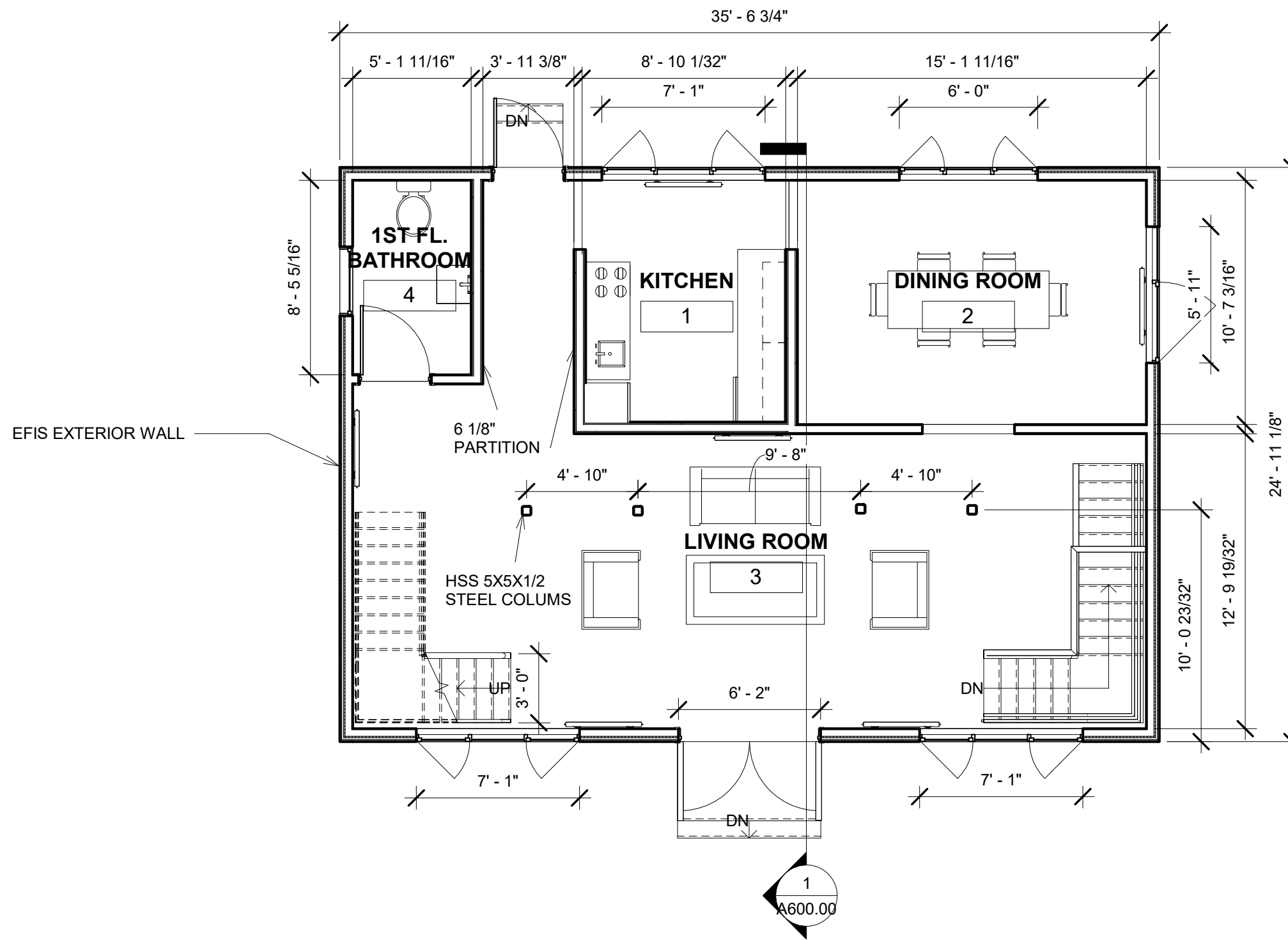
No.	Description	Date

BASEMENT PLAN

Project number	1
Date	Issue Date
Drawn by	AQIB BHATTI
Checked by	ROBERT BRYCE

A100.10

Scale 1/4" = 1'-0"



① FIRST FLOOR
3/16" = 1'-0"



www.autodesk.com/revit

RESIDENTIAL HOUSE

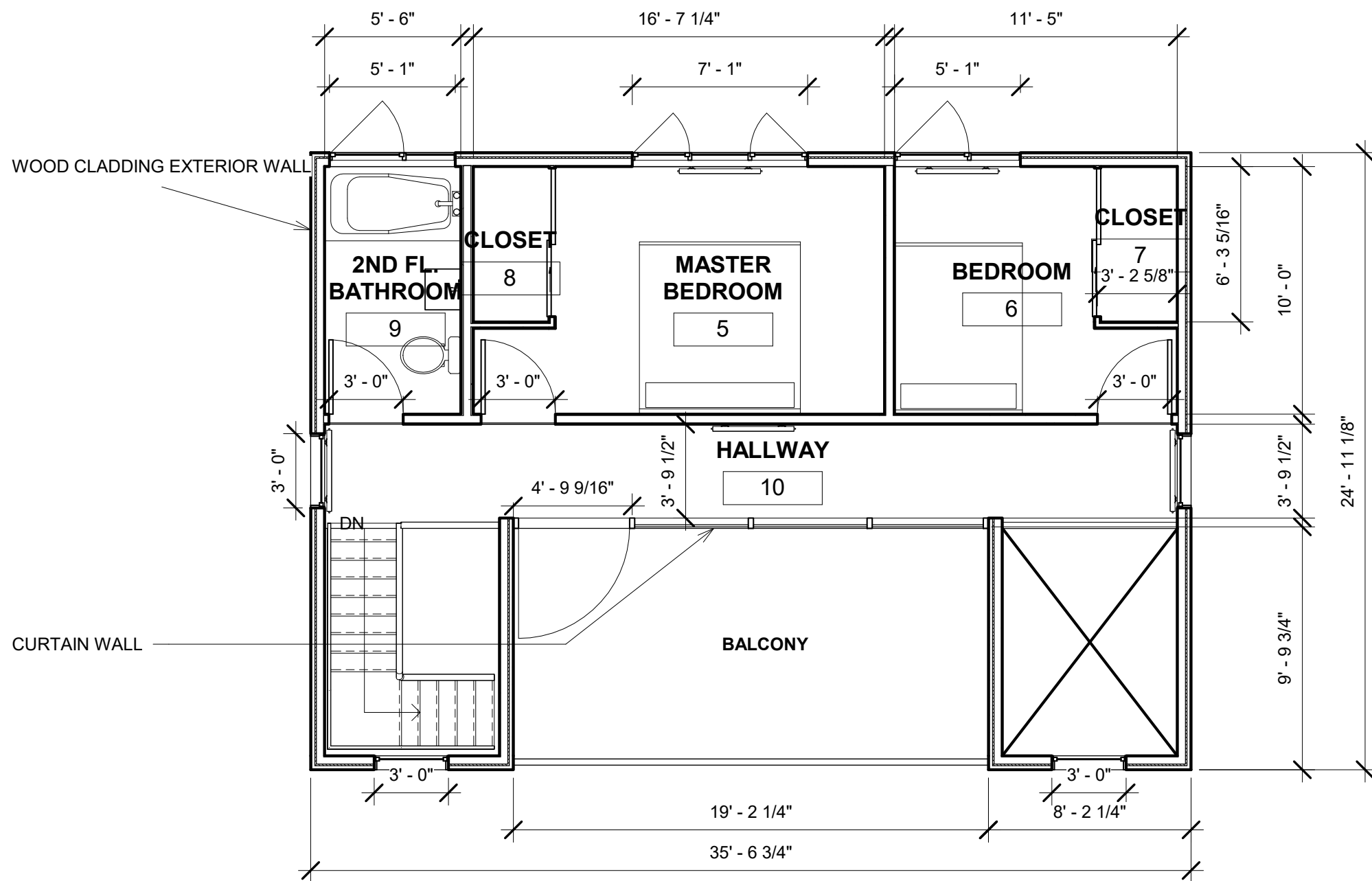
No.	Description	Date

FIRST FLOOR PLAN

Project number	1
Date	Issue Date
Drawn by	AQIB BHATTI
Checked by	ROBERT BRYCE

A200.00

Scale 3/16" = 1'-0"



① SECOND FLOOR
3/16" = 1'-0"



www.autodesk.com/revit

RESIDENTIAL HOUSE

No.	Description	Date

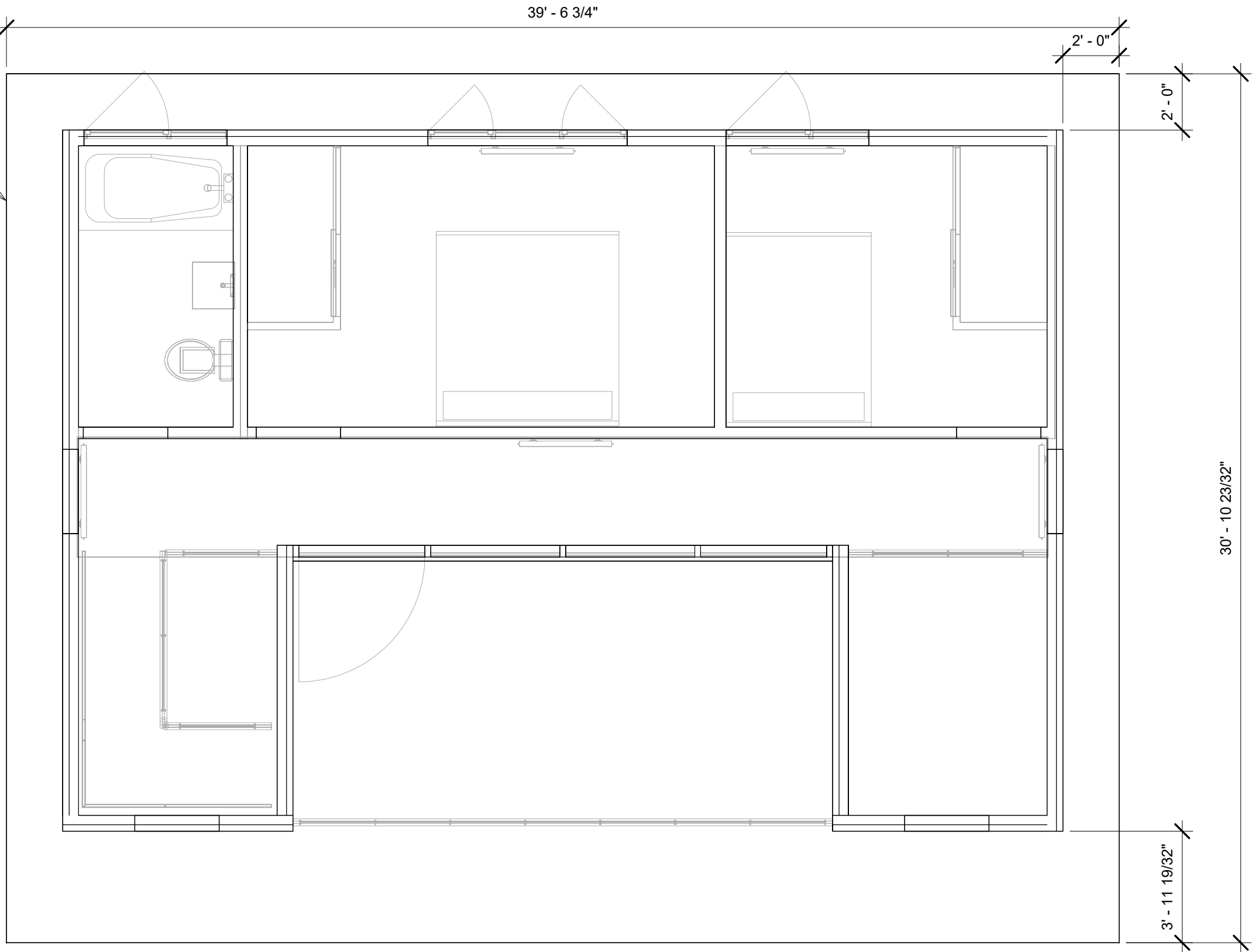
SECOND FLOOR PLAN

Project number	1
Date	Issue Date
Drawn by	AQIB BHATTI
Checked by	ROBERT BRYCE

A300.00

Scale 3/16" = 1'-0"

1"/12" SLOPE SHED ROOF



① ROOF
1/4" = 1'-0"



www.autodesk.com/revit

RESIDENTIAL HOUSE

No.	Description	Date

ROOF PLAN

Project number	1
Date	Issue Date
Drawn by	AQIB BHATTI
Checked by	ROBERT BRYCE

A400.00

Scale 1/4" = 1'-0"



① South
1/4" = 1'-0"



www.autodesk.com/revit

RESIDENTIAL HOUSE

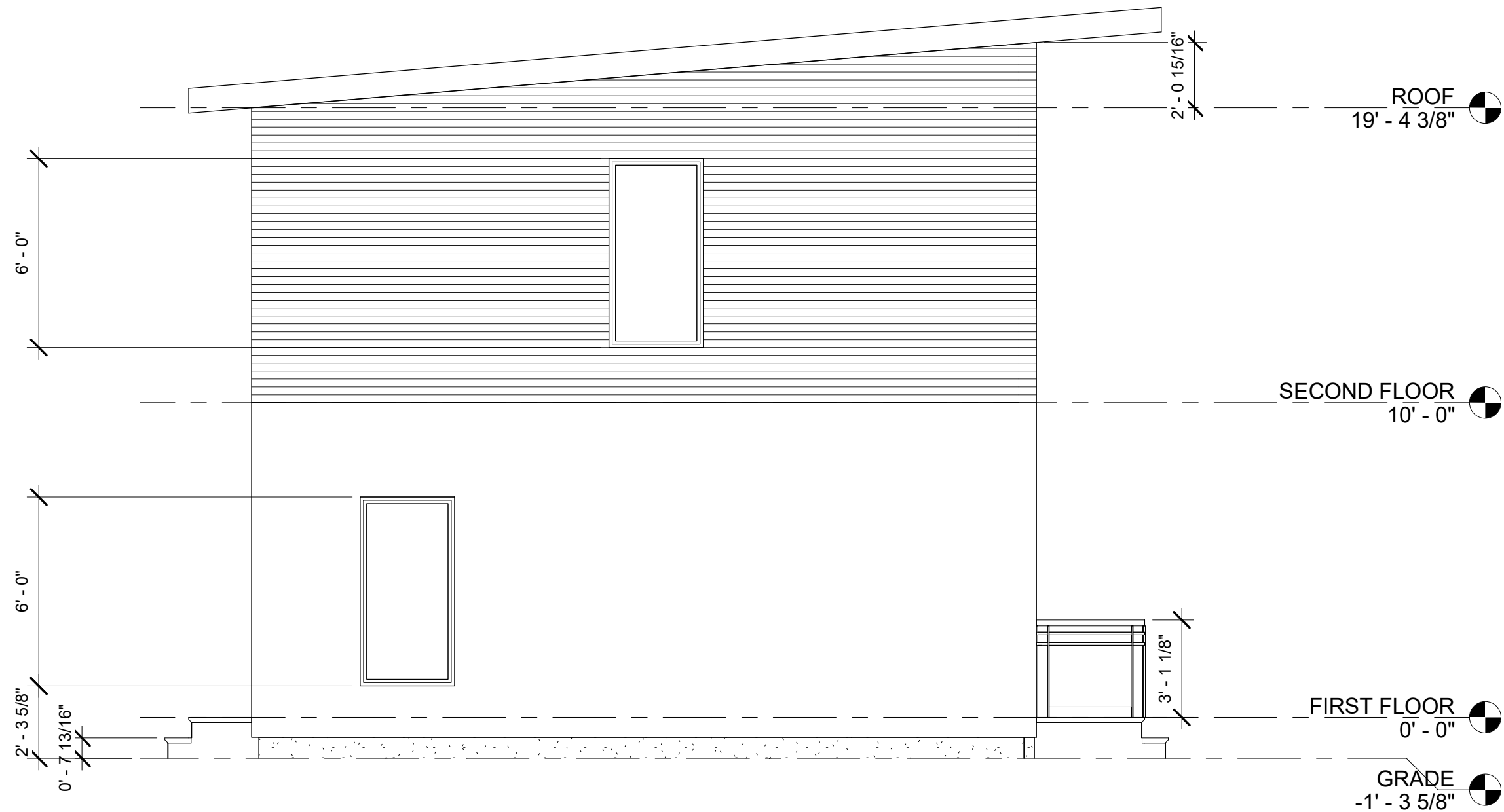
No.	Description	Date

FRONT ELEVATION

Project number	1
Date	Issue Date
Drawn by	AQIB BHATTI
Checked by	ROBERT BRYCE

A500.00

Scale 1/4" = 1'-0"



① West
1/4" = 1'-0"



www.autodesk.com/revit

RESIDENTIAL HOUSE

No.	Description	Date

LEFT ELEVATION

Project number	1
Date	Issue Date
Drawn by	AQIB BHATTI
Checked by	ROBERT BRYCE

A500.10

Scale 1/4" = 1'-0"



① North
1/4" = 1'-0"



www.autodesk.com/revit

RESIDENTIAL HOUSE

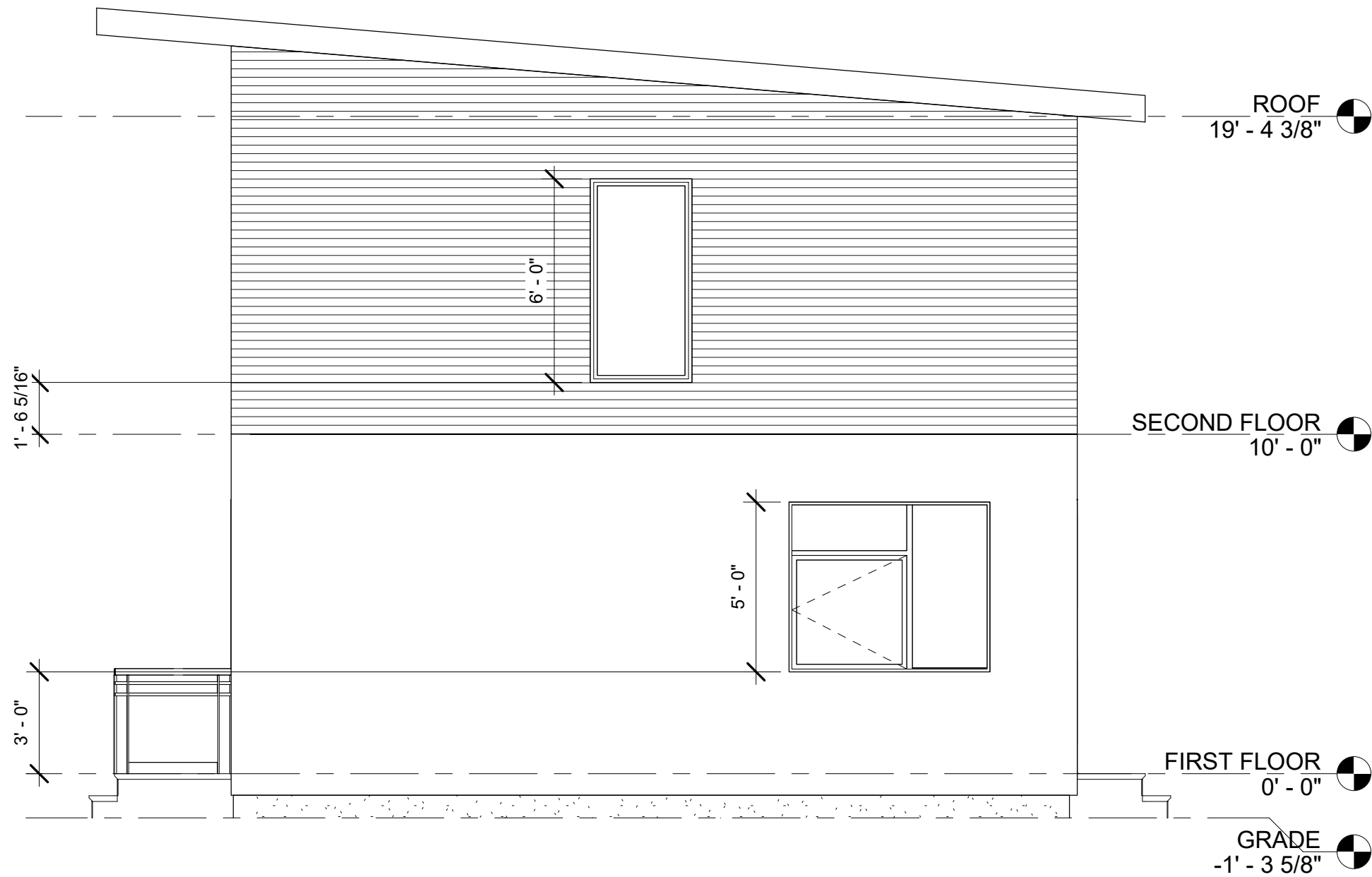
No.	Description	Date

REAR ELEVATION

Project number	1
Date	Issue Date
Drawn by	AQIB BHATTI
Checked by	ROBERT BRYCE

A500.20

Scale 1/4" = 1'-0"



① East
1/4" = 1'-0"



www.autodesk.com/revit

RESIDENTIAL HOUSE

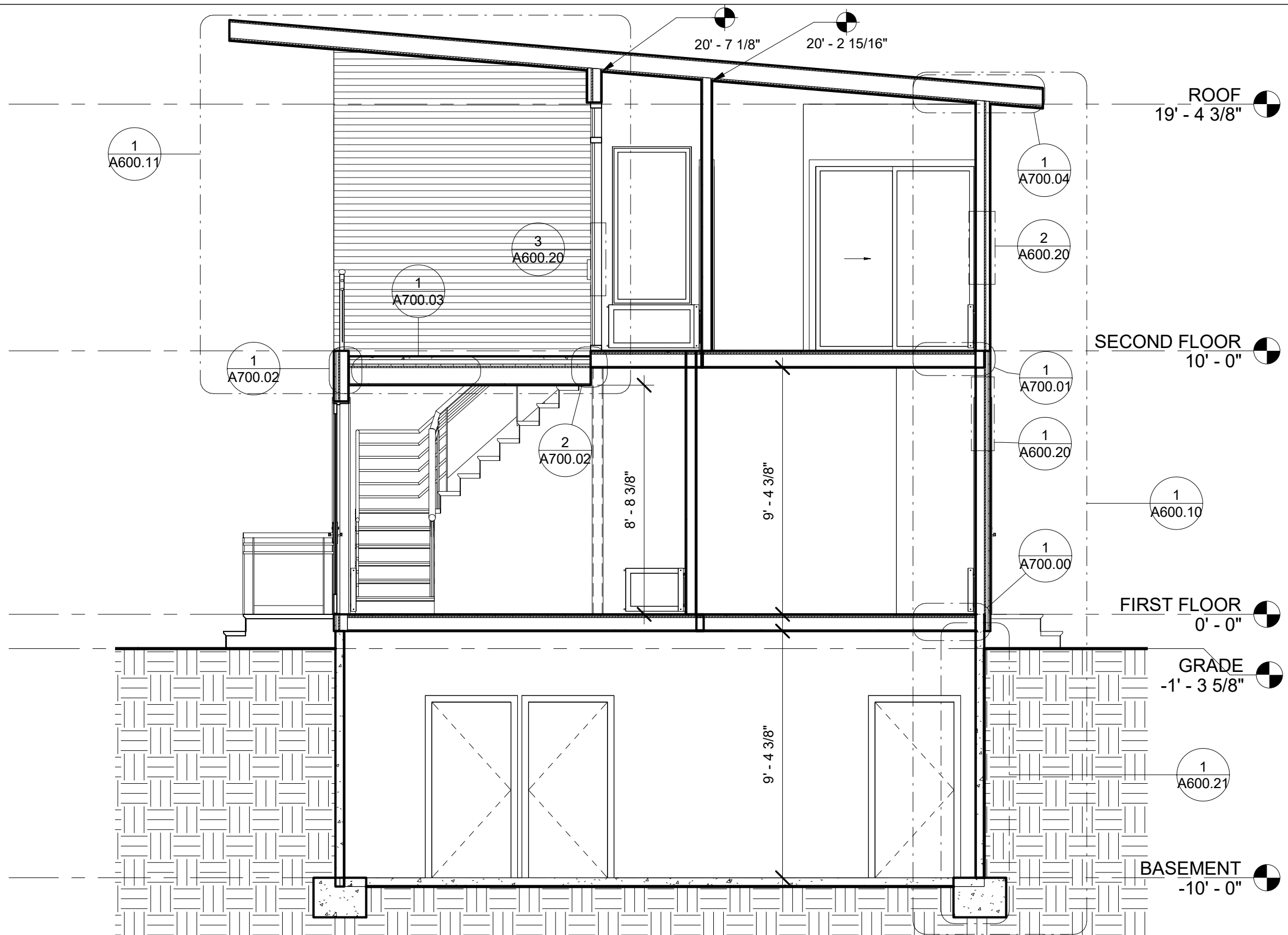
No.	Description	Date

RIGHT ELEVATION

Project number	1
Date	Issue Date
Drawn by	AQIB BHATTI
Checked by	ROBERT BRYCE

A500.30

Scale 1/4" = 1'-0"



1 BUILDING SECTION
1/4" = 1'-0"

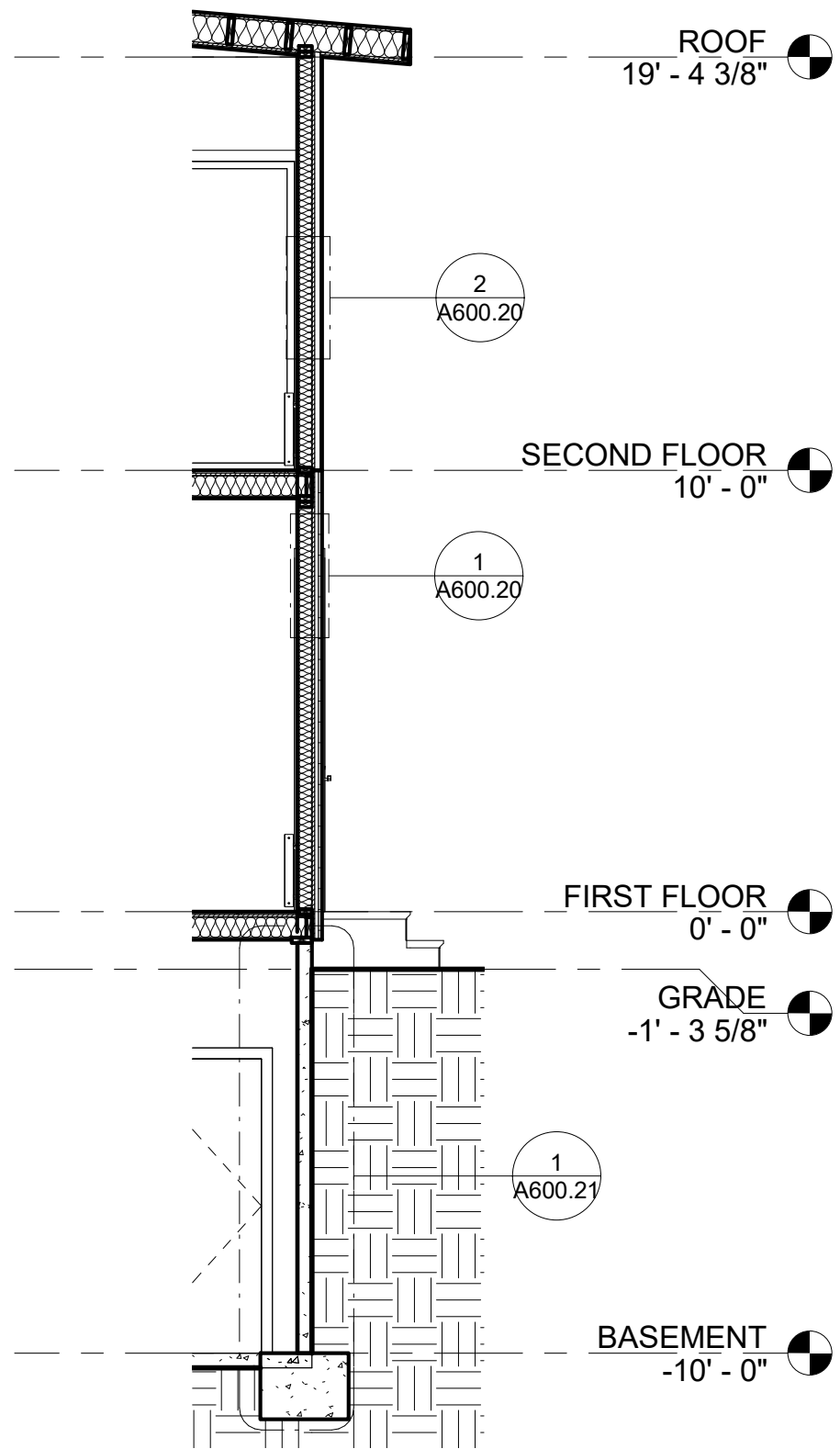


www.autodesk.com/revit

RESIDENTIAL HOUSE

No.	Description	Date

BUILDING SECTION		A600.00
Project number	1	
Date	Issue Date	
Drawn by	AQIB BHATTI	
Checked by	ROBERT BRYCE	
Scale		1/4" = 1'-0"



① WALL SECTION
1/4" = 1'-0"



www.autodesk.com/revit

RESIDENTIAL HOUSE

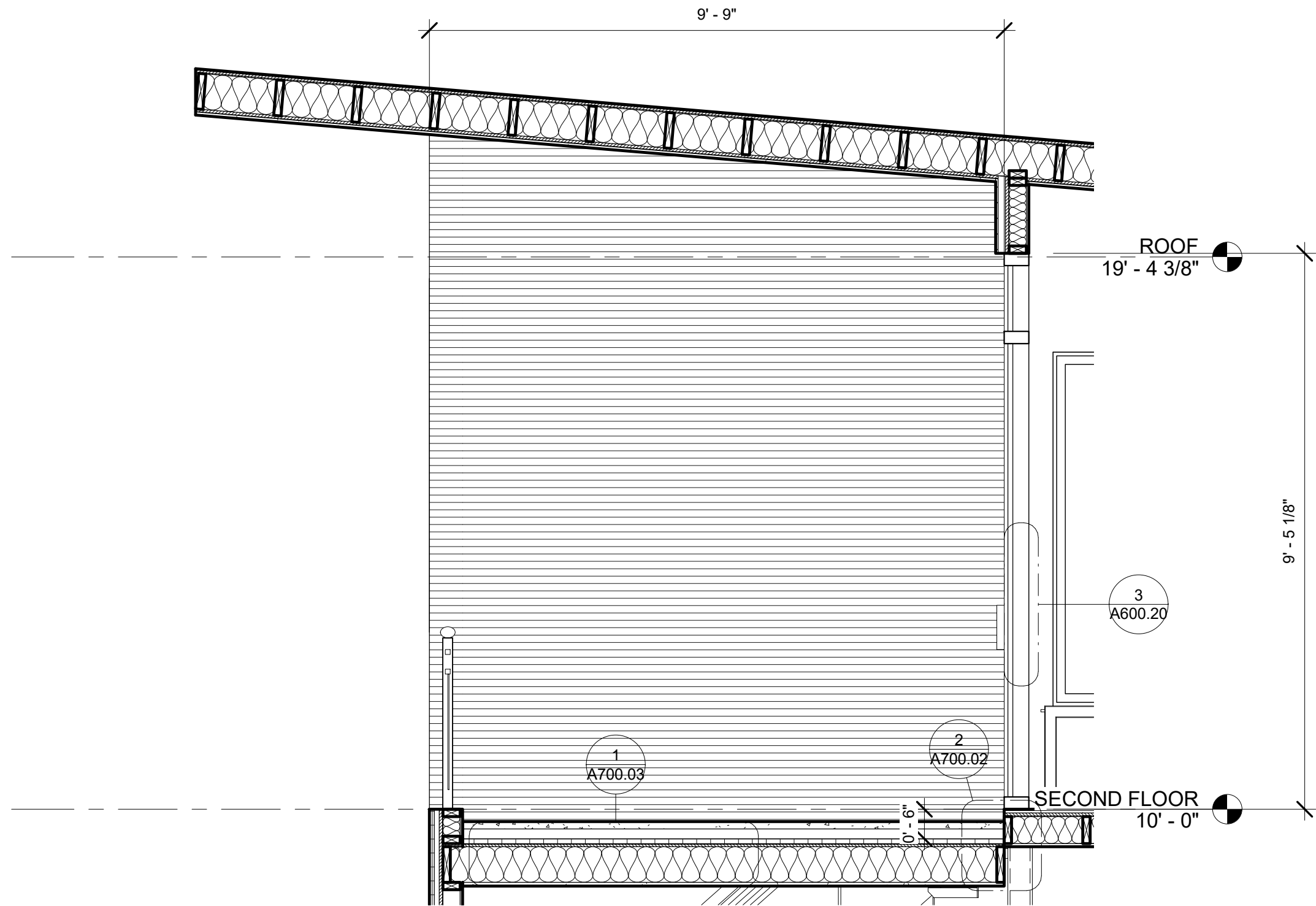
No.	Description	Date

WALL SECTION

Project number	1
Date	Issue Date
Drawn by	AQIB BHATTI
Checked by	ROBERT BRYCE

A600.10

Scale 1/4" = 1'-0"



1 BALCONY SECTION
1/2" = 1'-0"



www.autodesk.com/revit

RESIDENTIAL HOUSE

No.	Description	Date

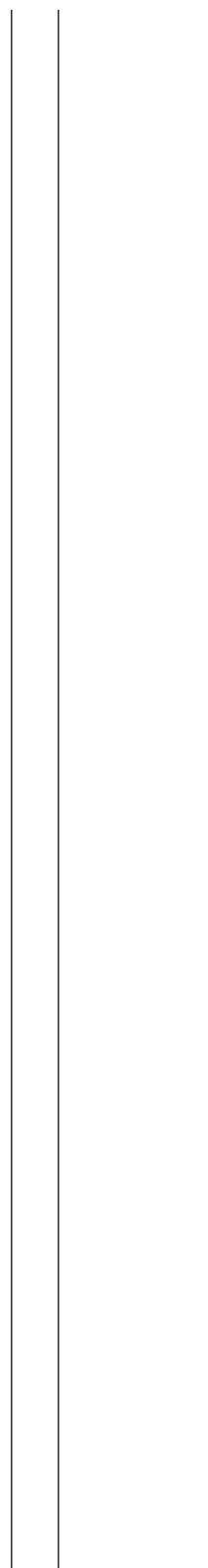
BALCONY SECTION

Project number	1
Date	Issue Date
Drawn by	AQIB BHATTI
Checked by	ROBERT BRYCE

A600.11

Scale 1/2" = 1'-0"

CURTAIN WALL SYSTEM
R=.68



1/2" WOOD CLADDING
R=.34

2" WOOD BATTEN
R=1.89

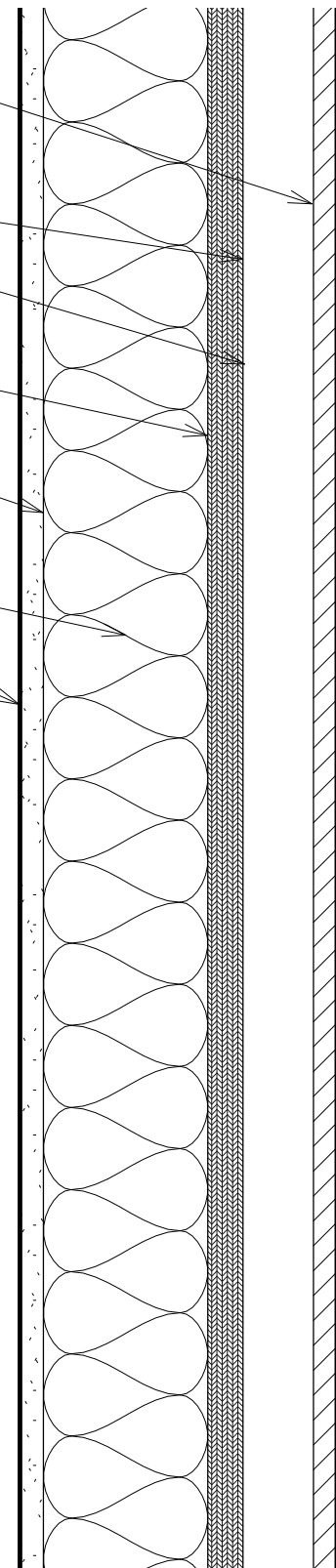
VAPOR BARRIER

3/4" PLYWOOD SHEATHING
R=.94

2X4 WOOD STUD
R=4.53

BATT INSULATION
R=21

GYPSUM WALL BOARD
R=0.32



1" EXTERIOR RIGID INSULATION
R=3.6

1" AIRSPACE W/T FURRING CHANNEL
R=1.2

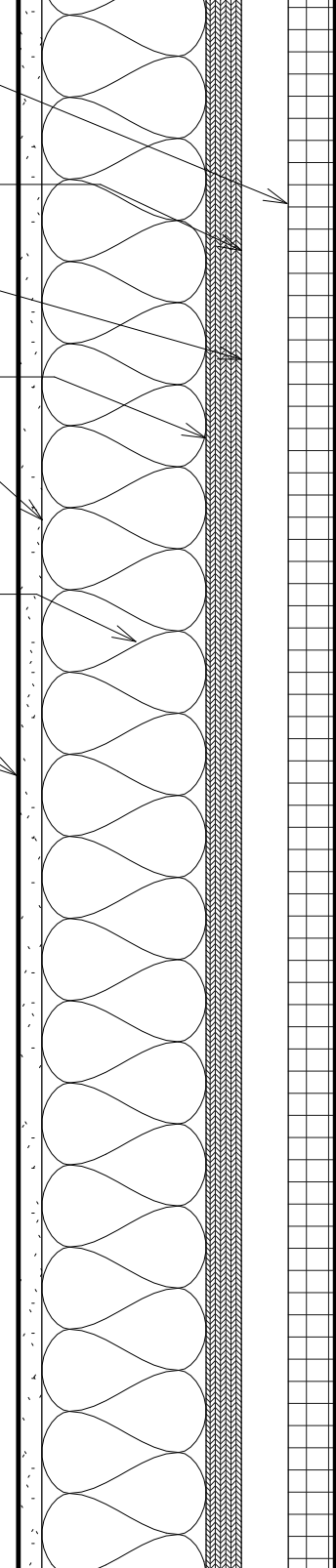
VAPOR BARRIER

3/4" PLYWOOD SHEATHING
R=0.94

2X4 WOOD STUD
R=4.35

BATT INSULATION
R=21

1/2" GYPSUM WALL BOARD
R=0.32



③ CURTAIN WALL DETAIL
3" = 1'-0"

② WOOD CLADDING WALL DETAIL
3" = 1'-0"

① EIFS WALL DETAIL
3" = 1'-0"



www.autodesk.com/revit

RESIDENTIAL HOUSE

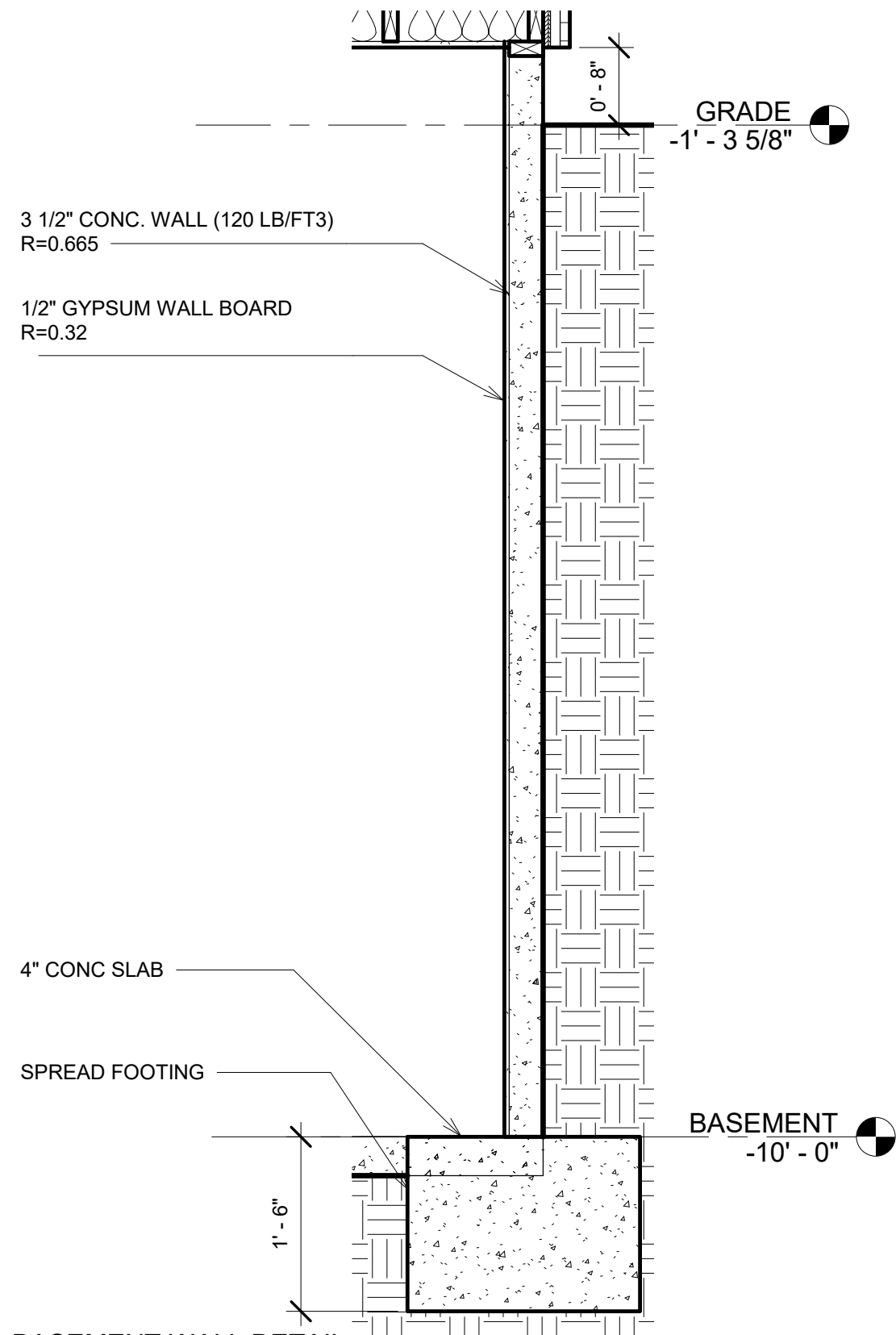
No.	Description	Date

EXTERIOR WALL DETAILS

Project number	1
Date	Issue Date
Drawn by	AQIB BHATTI
Checked by	ROBERT BRYCE

A600.20

Scale 3" = 1'-0"



1 BASEMENT WALL DETAIL
3/4" = 1'-0"



www.autodesk.com/revit

RESIDENTIAL HOUSE

No.	Description	Date

BASEMENT WALL DETAIL		A600.21
Project number	1	
Date	Issue Date	
Drawn by	AQIB BHATTI	
Checked by	ROBERT BRYCE	
Scale		3/4" = 1'-0"

1" EXTERIOR RIGID INSULATION
R=3.6

1" AIR SPACE W/T FURRING CHANNEL
R=1.2

VAPOR BARRIER

3/4" PLYWOOD SHEATHING
R=0.94

2X6 WOOD JOIST
R=6.864

BATT INSULATION
R=23

FIRST FLOOR
0' - 0"

① 1ST FLOOR DETAIL
3" = 1'-0"



www.autodesk.com/revit

RESIDENTIAL HOUSE

No.	Description	Date

FIRST FLOOR BOND DETAIL

Project number	1	A700.00
Date	Issue Date	
Drawn by	AQIB BHATTI	
Checked by	ROBERT BRYCE	
Scale		3" = 1'-0"

1" EXTERIOR RIGID INSULATION
R=3.6

1" AIR SPACE W/T FURRING CHANNEL
R=1.2

VAPOR BARRIER

3/4" PLYWOOD SHEATHING
R=0.94

2X6 WOOD JOIST
R=6.864

BATT INSULATION
R=23

SECOND FLOOR
10' - 0"

① 2ND FLOOR DETAIL
3" = 1'-0"



www.autodesk.com/revit

RESIDENTIAL HOUSE

No.	Description	Date

SECOND FLOOR BOND DETAIL

Project number	1	A700.01
Date	Issue Date	
Drawn by	AQIB BHATTI	
Checked by	ROBERT BRYCE	
Scale		3" = 1'-0"

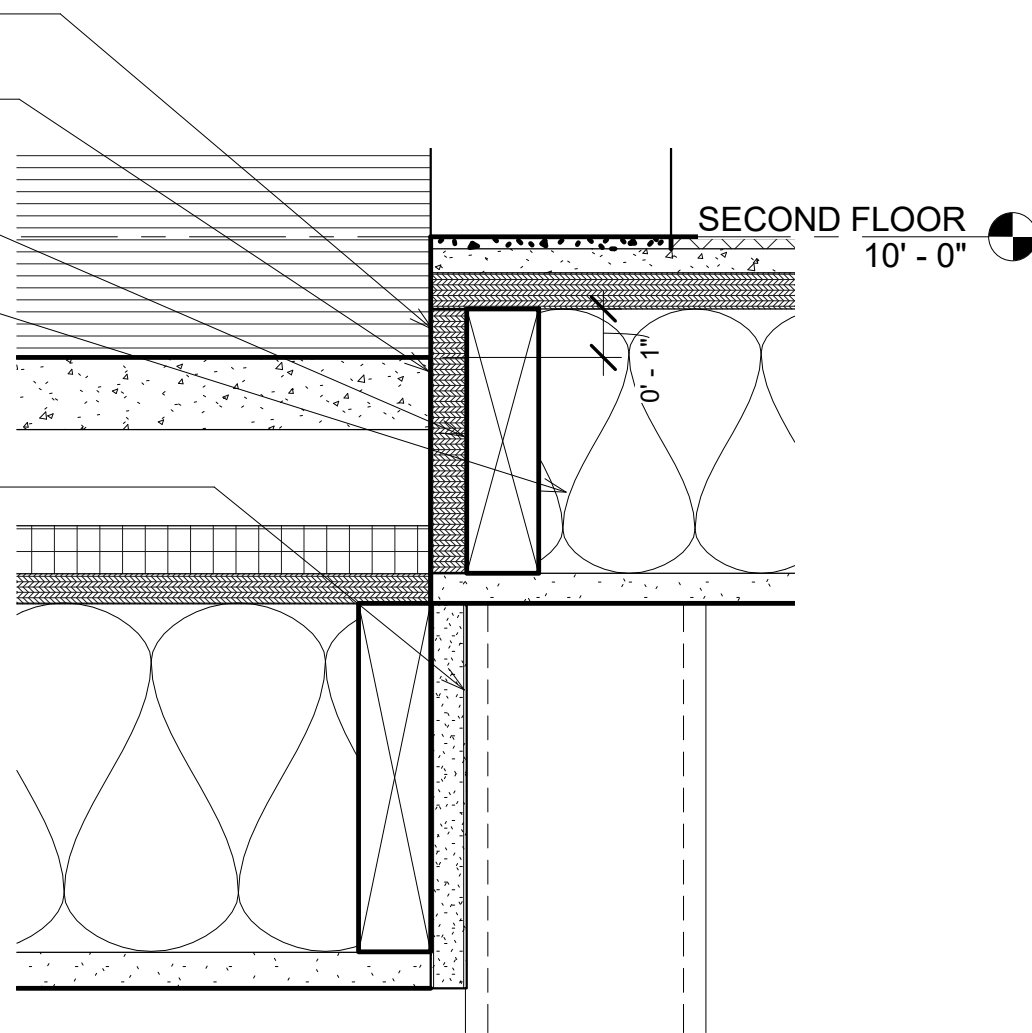
ASHPHALT ROLL ROOFING
R=0.15

3/4" PLYWOOD SHEATHING
R=0.94

2X6 WOOD JOIST
R=6.864

BATT INSULATION
R=23

HSS 5X5X1/2 STEEL COLUMN



2 BALCONY STEP BOND
3" = 1'-0"

1" EXTERIOR RIGID INSULATION
R=3.6

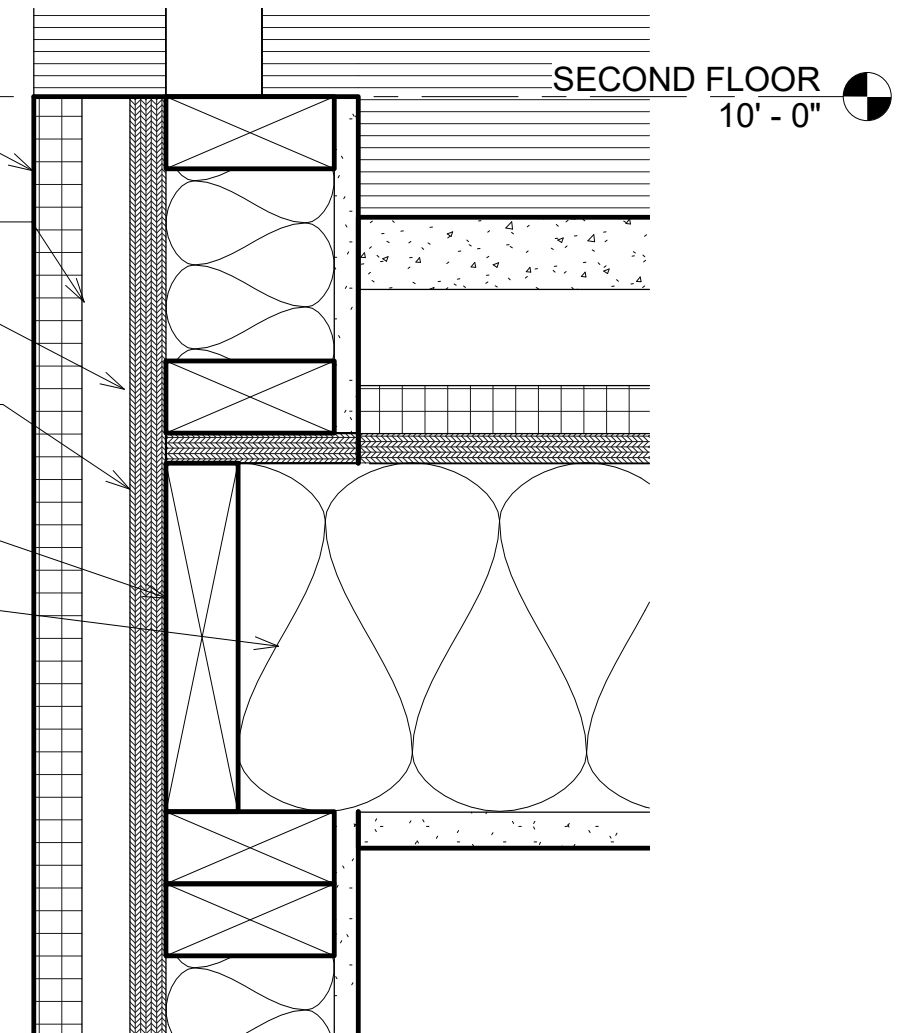
1" AIR SPACE W/T FURRING CHANNEL
R=1.2

VAPOR BARRIER

3/4" PLYWOOD SHEATHING
R=0.94

2X8 WOOD JOIST
R=9.45

BATT INSULATION
R=19



1 BALCONY FLOOR BOND
3" = 1'-0"



www.autodesk.com/revit

RESIDENTIAL HOUSE

No.	Description	Date

BALCONY BONDS DETAIL

Project number 1
Date Issue Date
Drawn by AQIB BHATTI
Checked by ROBERT BRYCE

A700.02

Scale 3" = 1'-0"

1 1/2" CONC. PAVER
R=0.285

2" AIR SPACE FOR PEDESTALS
R=1.13

1" RIGID INSULATION
R=6.5

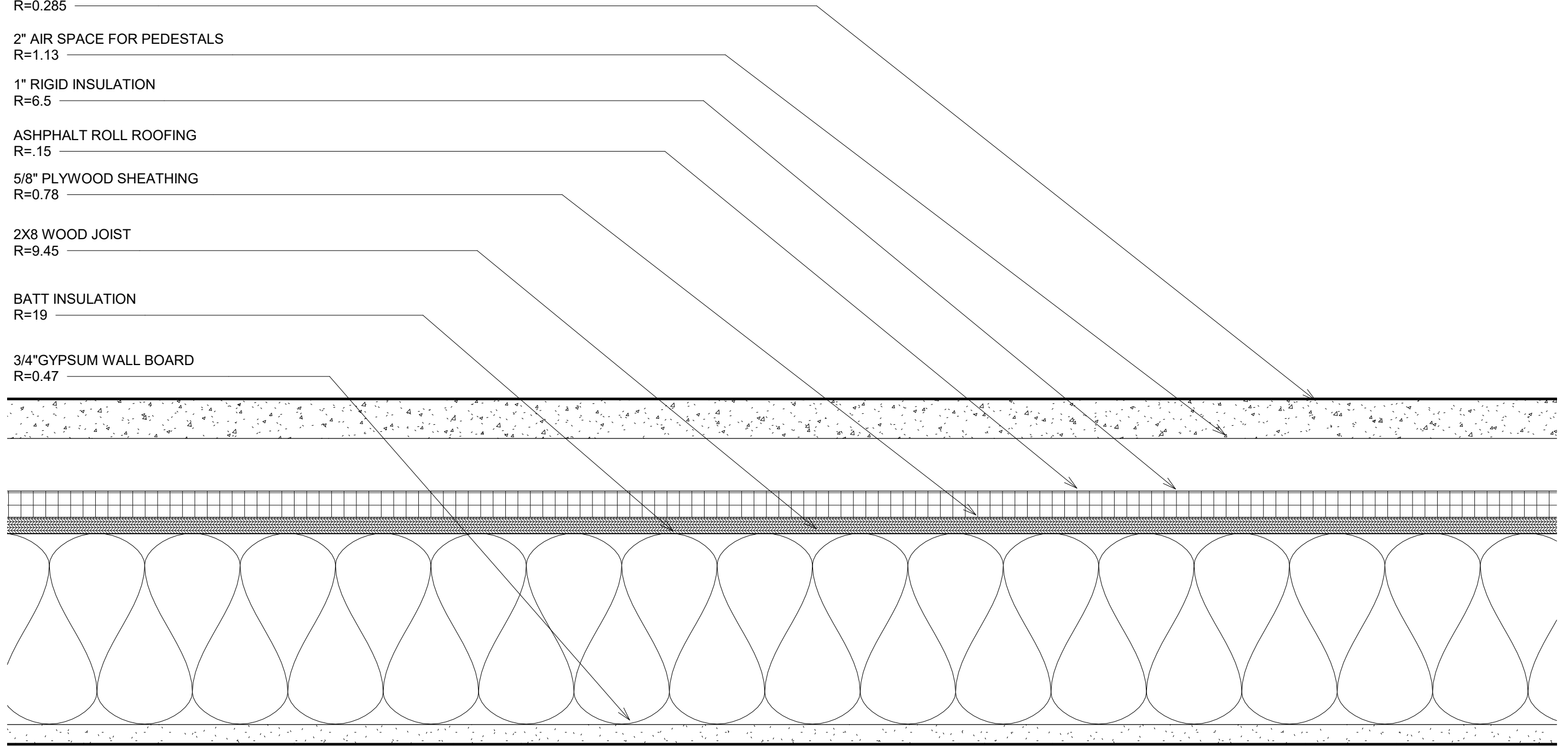
ASHPHALT ROLL ROOFING
R=.15

5/8" PLYWOOD SHEATHING
R=0.78

2X8 WOOD JOIST
R=9.45

BATT INSULATION
R=19

3/4" GYPSUM WALL BOARD
R=0.47



1 BALCONY FLOOR
3" = 1'-0"



www.autodesk.com/revit

RESIDENTIAL HOUSE

No.	Description	Date

BALCONY FLOOR DETAIL

Project number	1
Date	Issue Date
Drawn by	AQIB BHATTI
Checked by	ROBERT BRYCE

A700.03

Scale 3" = 1'-0"

ASHPHALT SHINGLE
R=0.44

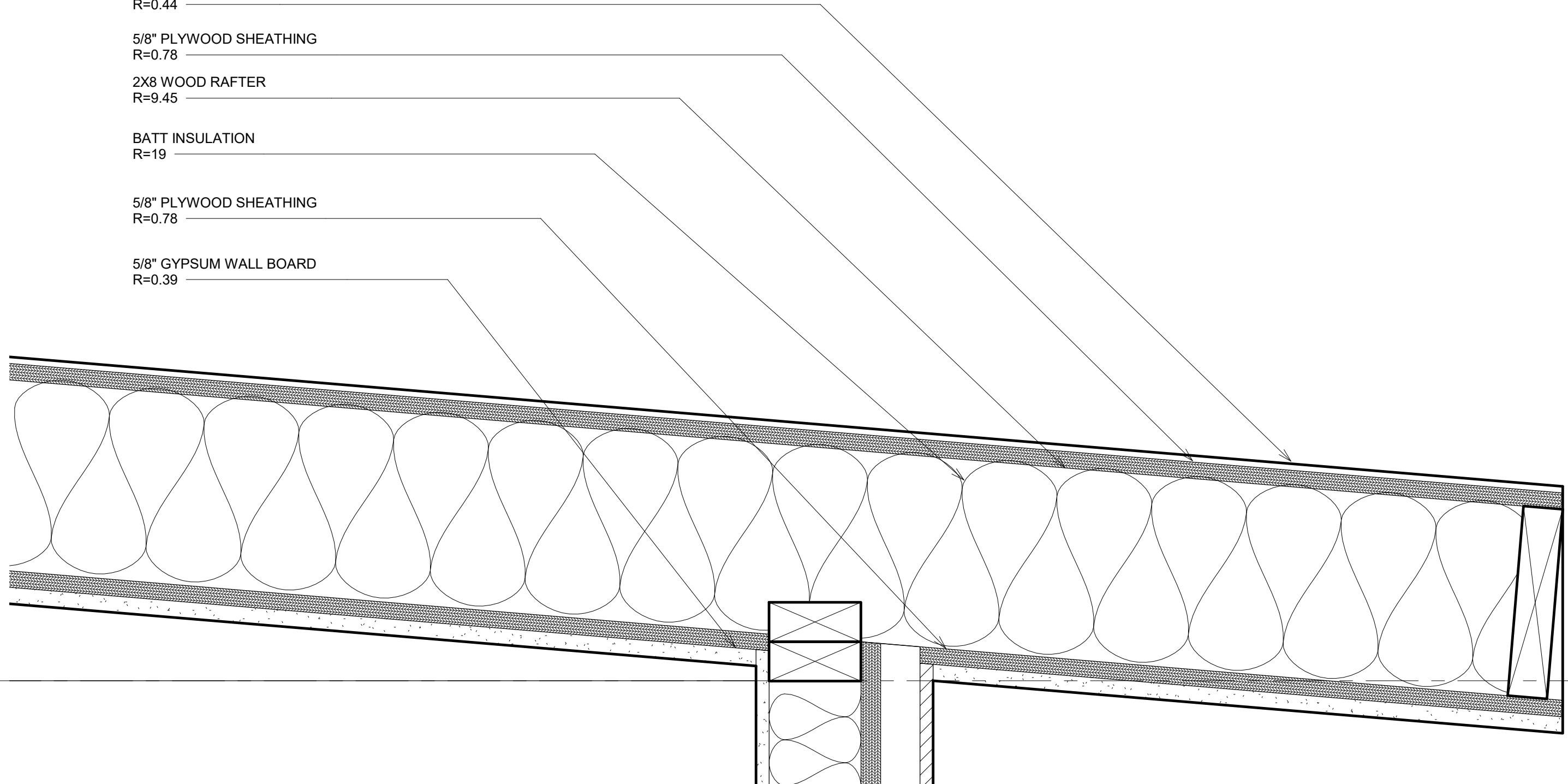
5/8" PLYWOOD SHEATHING
R=0.78

2X8 WOOD RAFTER
R=9.45

BATT INSULATION
R=19

5/8" PLYWOOD SHEATHING
R=0.78

5/8" GYPSUM WALL BOARD
R=0.39



ROOF
19' - 4 3/8"

1 ROOF DETAIL
3" = 1'-0"



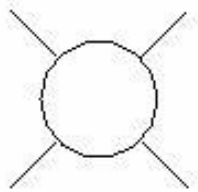
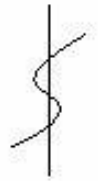
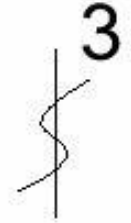
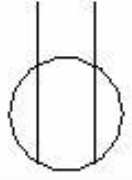
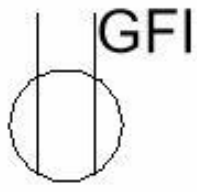

www.autodesk.com/revit

RESIDENTIAL HOUSE

No.	Description	Date

ROOF DETAIL	
Project number	1
Date	Issue Date
Drawn by	AQIB BHATTI
Checked by	ROBERT BRYCE
A700.04	
Scale 3" = 1'-0"	

LEGEND

	LIGHT FIXTURE
	SWITCH
	3 WAY SWITCH
	OUTLET
	GFI OUTLET
	6GA COPPER WIRE



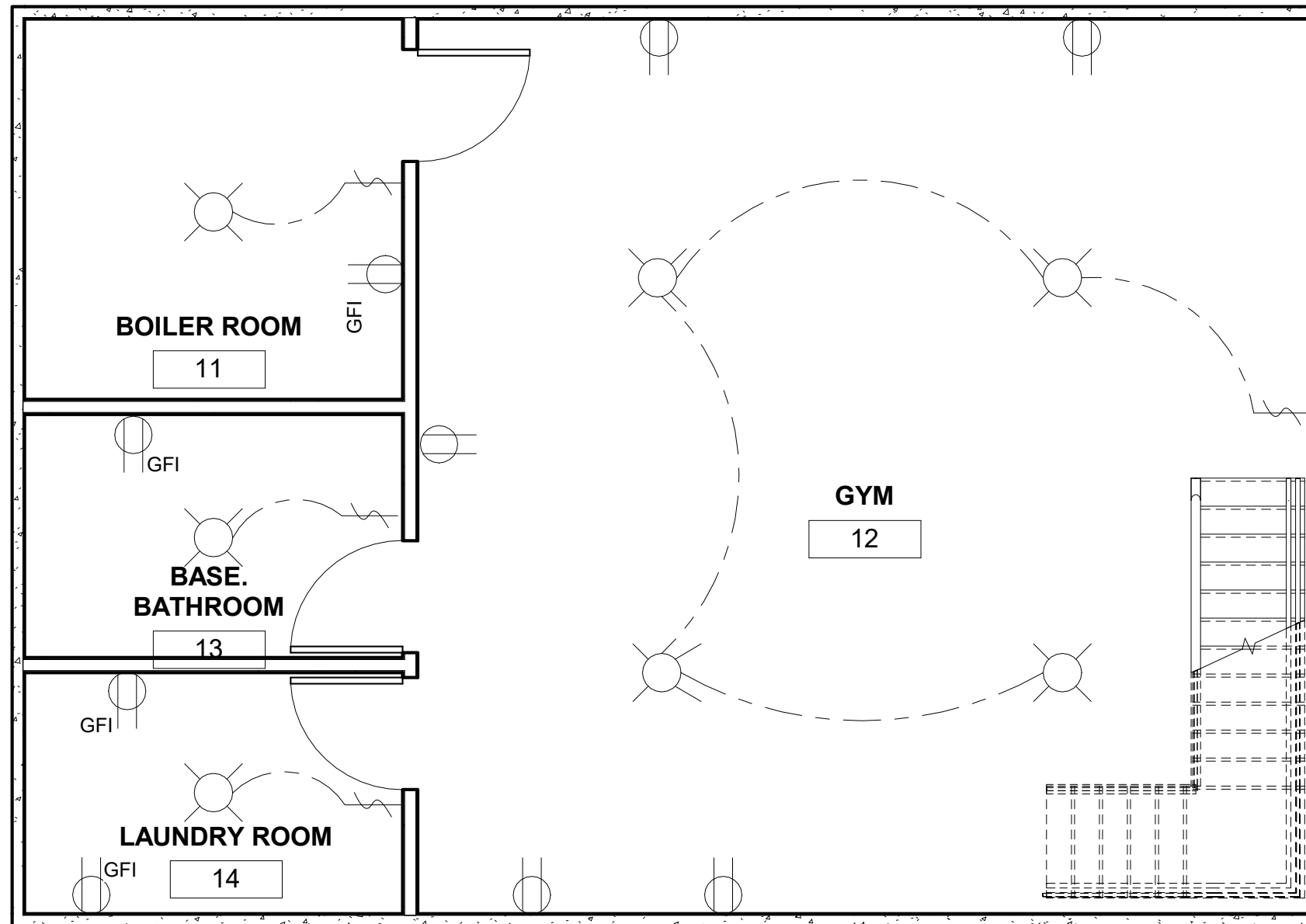
www.autodesk.com/revit

RESIDENTIAL HOUSE

No.	Description	Date

ELECTRICAL COVER

Project number	1	E000.00
Date	Issue Date	
Drawn by	AQIB BHATTI	
Checked by	ROBERT BRYCE	
Scale		



① BASEMENT ELECTRICAL PLAN
1/4" = 1'-0"



www.autodesk.com/revit

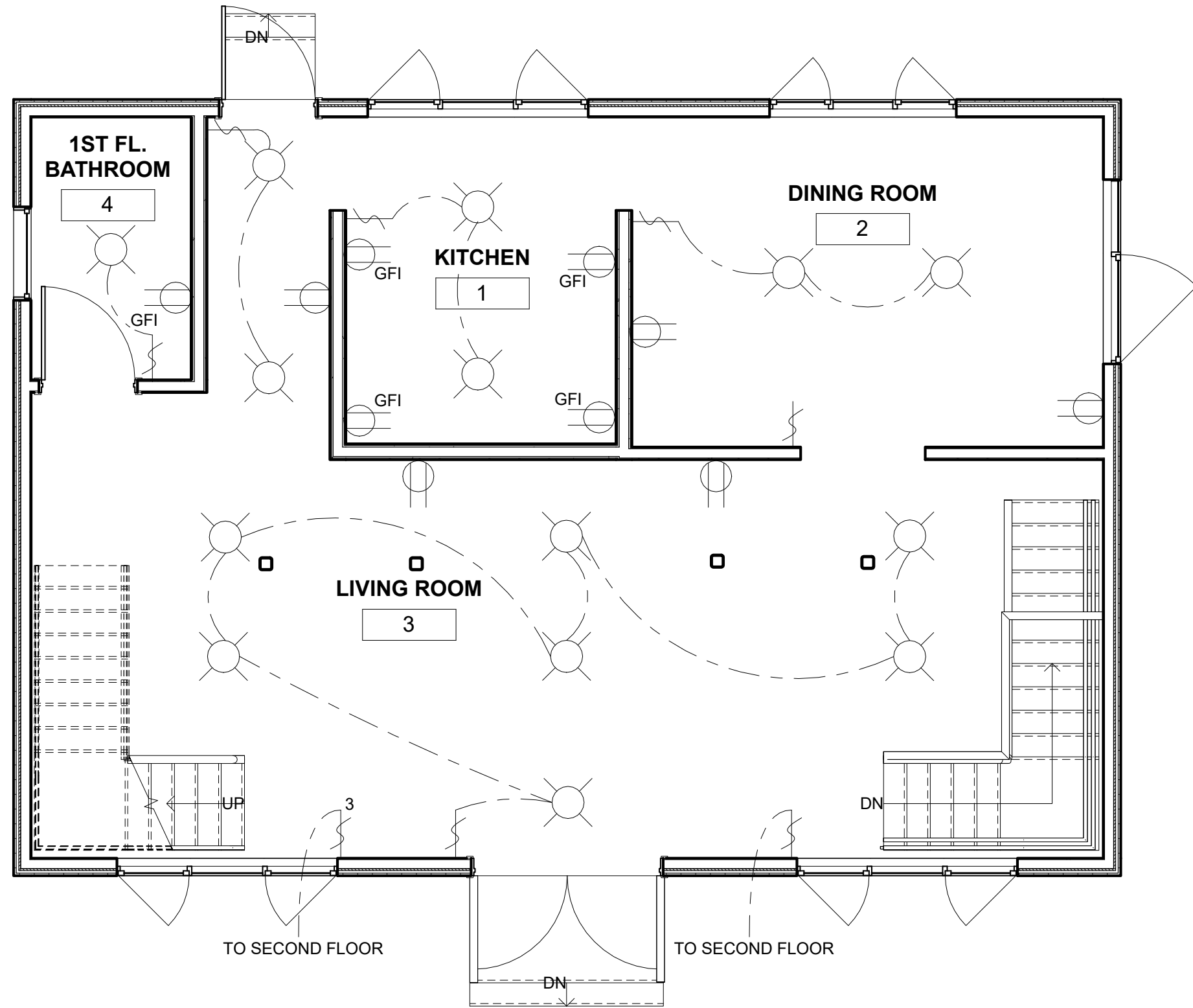
RESIDENTIAL HOUSE

No.	Description	Date

ELECTRICAL BASEMENT PLAN

Project number	1	E100.00
Date	Issue Date	
Drawn by	AQIB BHATTI	
Checked by	ROBERT BRYCE	
Scale		1/4" = 1'-0"

1/13/2019 12:53:43 AM



① FIRST FLOOR ELECTRICAL PLAN
1/4" = 1'-0"



www.autodesk.com/revit

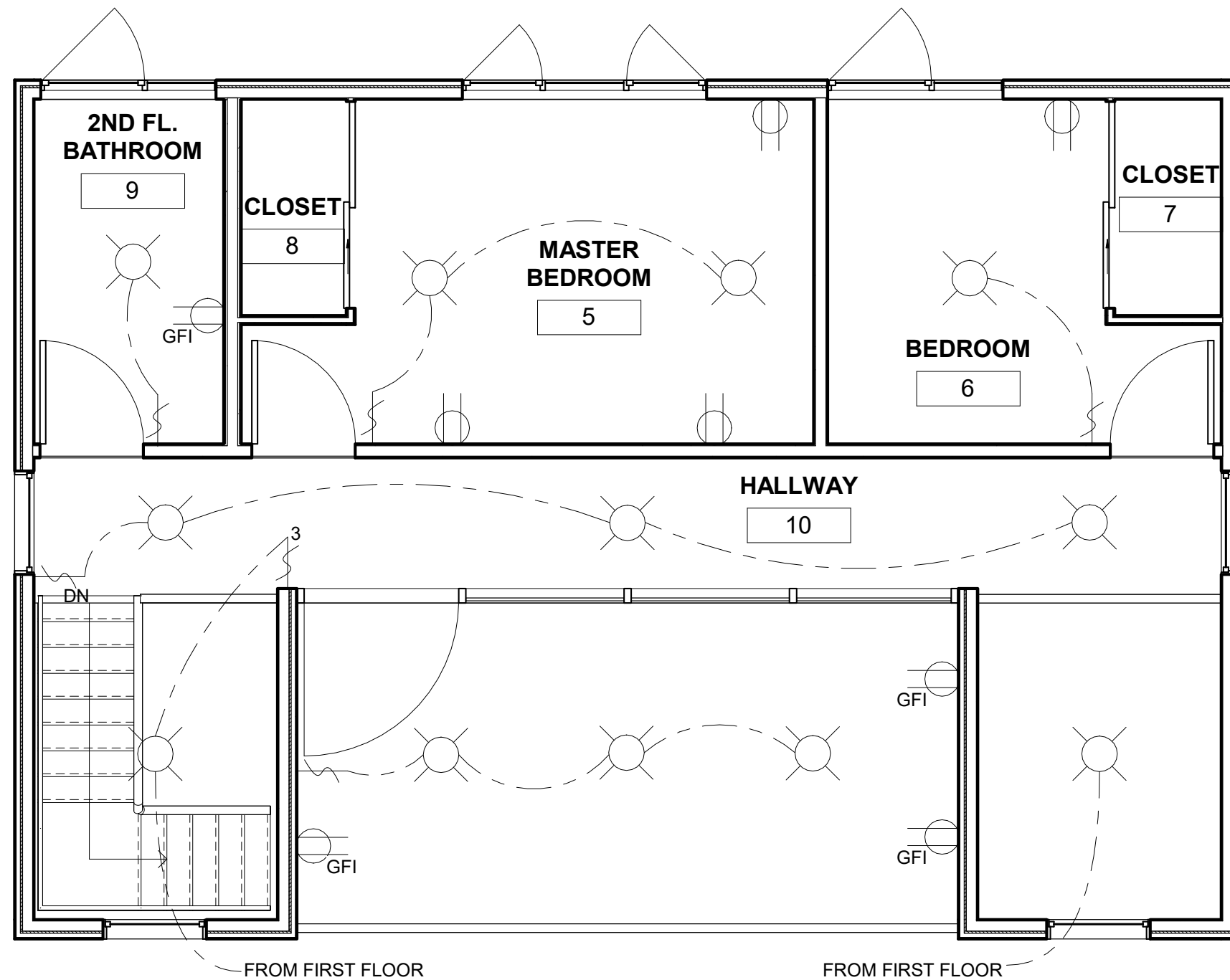
RESIDENTIAL HOUSE

No.	Description	Date

ELECTRICAL FIRST FLOOR

PLAN	ber 1	E200.00
Date	Issue Date	
Drawn by	AQIB BHATTI	
Checked by	ROBERT BRYCE	
Scale 1/4" = 1'-0"		

1/13/2019 12:53:43 AM



① SECOND FLOOR ELECTRICAL PLAN
1/4" = 1'-0"



www.autodesk.com/revit

RESIDENTIAL HOUSE

No.	Description	Date

ELECTRICAL THIRD FLOOR

PLAN_{ber} 1

Date Issue Date

Drawn by AQIB BHATTI

Checked by ROBERT BRYCE

E300.00

Scale 1/4" = 1'-0"

1/13/2019 12:53:43 AM

BOILER



Search for product or SKU



1-888-757-4774

ORDER STATUS CONTACT US

PEX Heating Plumbing Fittings Valves HVAC Thermostats Electrical

Home > Heating Supplies > Boilers > High Efficiency Gas Boilers > Weil McLain Ultra Bc



Ultra 80 - 62,000 BTU Output High Efficiency Boiler (Nat Gas)

SKU: 383-500-732 Brand: Weil McLain Rating: ★★★★★ (3)

\$2,819.95 each **✘ Out of Stock**
Get it Fri, May 18 - Tue, May 29

ADD TO CART

RADIATOR



Search for product or SKU



1-888-757-4774

ORDER STATUS CONTACT US

PEX Heating Plumbing Fittings Valves HVAC Thermostats Electrical

Home > Heating Supplies > Baseboard Heaters > Buderus Panel Radiators



Model 21, 20" x 36" Hydronic Panel Radiator w/ Bracket

SKU: 3-42036 Brand: Buderus Rating: ★★★★★ (10)

\$333.95 each **In Stock**
Get 3 Tomorrow, May 3
More Available [Inventory Details](#)

ADD TO CART **FastTrack** Order by 6PM, receive tomorrow

Specs

Height (Inches):	20	Depth (Inches):	2-1/2"
Length (Inches):	36"	Color:	White
Warranty:	5 Year Material/Workmanship	Model:	21
BTU Output:	4380	Type:	Radiator
Weight (lbs):	52 lbs		



www.autodesk.com/revit

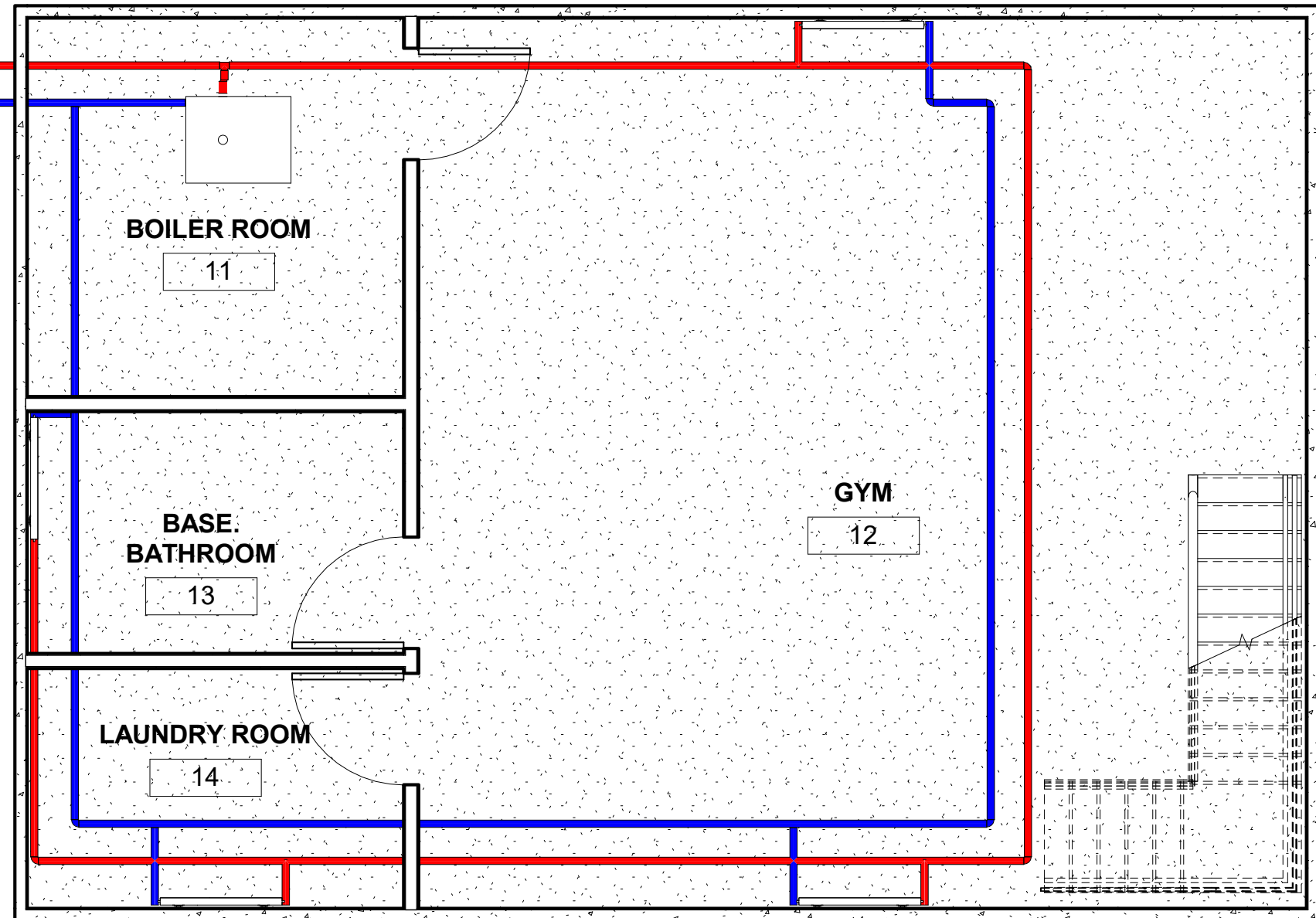
RESIDENTIAL HOUSE

No.	Description	Date

HEATING SYSTEM

Project number	1	M800.10
Date	Issue Date	
Drawn by	AQIB BHATTI	
Checked by	ROBERT BRYCE	
Scale		

FROM ABOVE FLOORS
FROM ABOVE FLOORS



Pipe Color Fill Legend

- Hydronic Return
- Hydronic Supply

1 BASEMENT HEATING PLAN
1/4" = 1'-0"



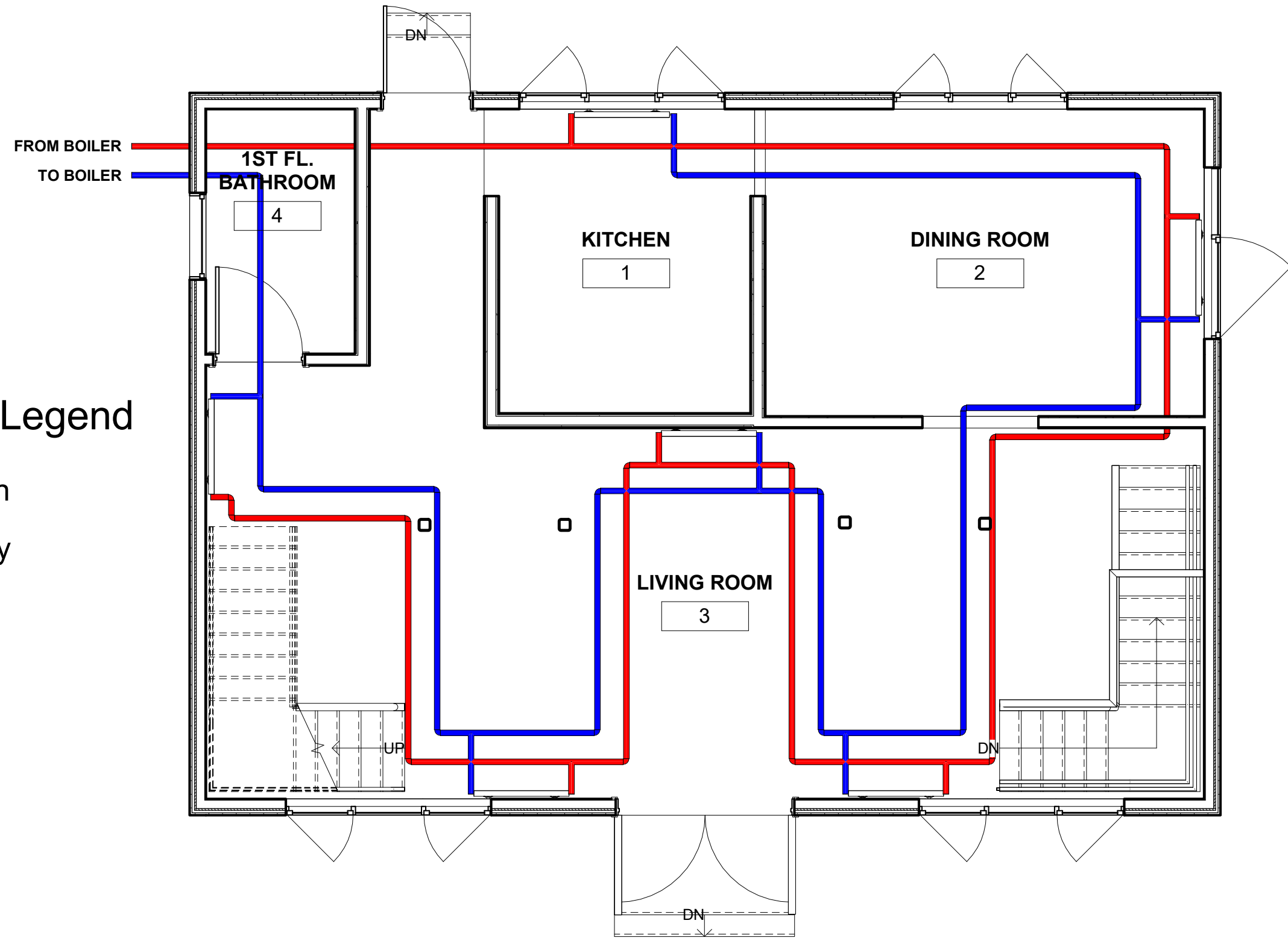
www.autodesk.com/revit

RESIDENTIAL HOUSE

No.	Description	Date

BASEMENT HEATING PLAN

Project number	1	M800.11
Date	Issue Date	
Drawn by	AQIB BHATTI	
Checked by	ROBERT BRYCE	
		Scale 1/4" = 1'-0"



Pipe Color Fill Legend

- Hydronic Return
- Hydronic Supply

① FIRST FLOOR HEATING PLAN
1/4" = 1'-0"



www.autodesk.com/revit

RESIDENTIAL HOUSE

No.	Description	Date

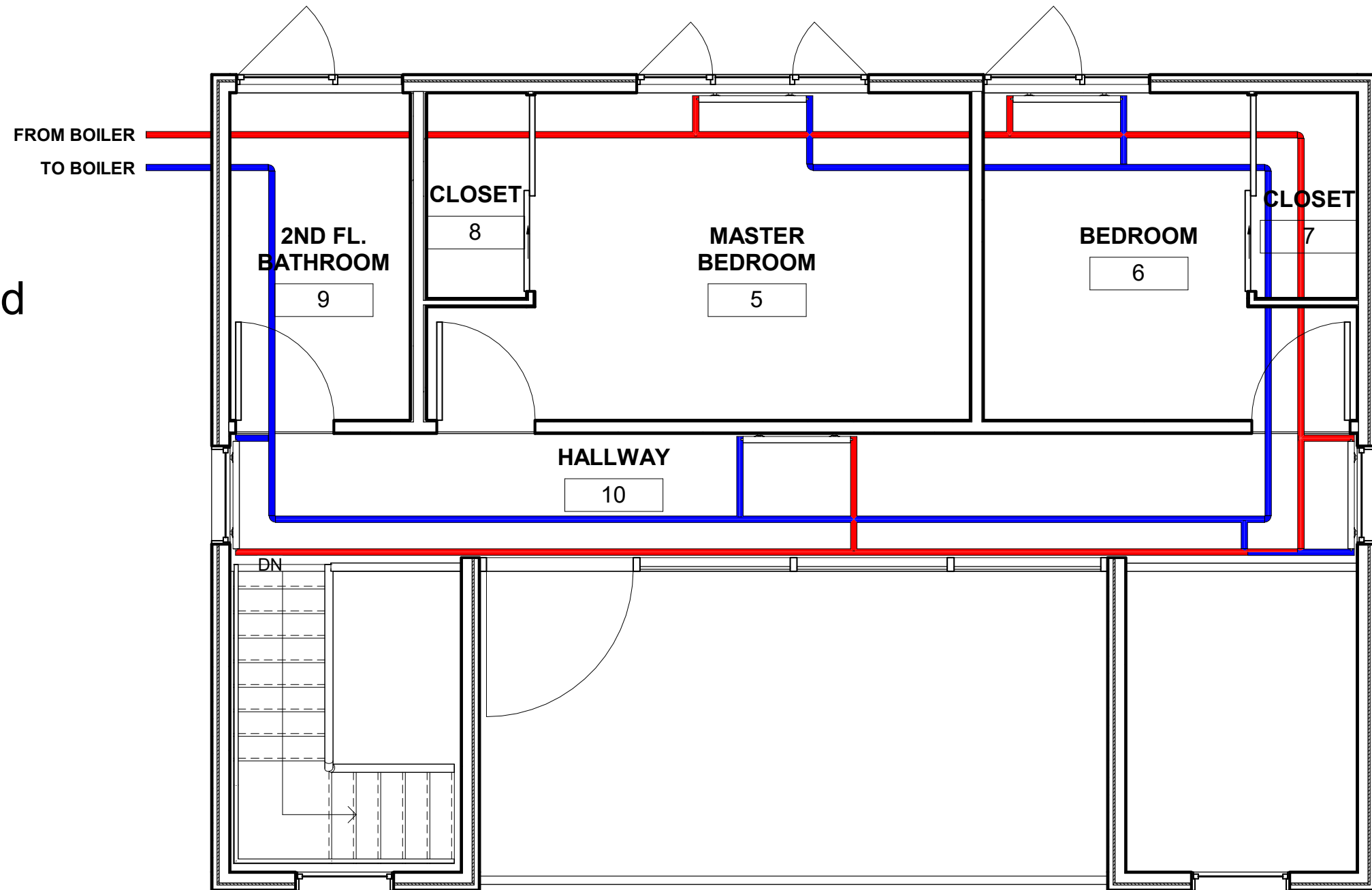
FIRST FLOOR HEATING PLAN

Project number	1	M800.12
Date	Issue Date	
Drawn by	AQIB BHATTI	
Checked by	ROBERT BRYCE	
		Scale 1/4" = 1'-0"

1/13/2019 12:53:45 AM

Pipe Color Fill Legend

- Hydronic Return
- Hydronic Supply



① SECOND FLOOR HEATING PLAN
1/4" = 1'-0"

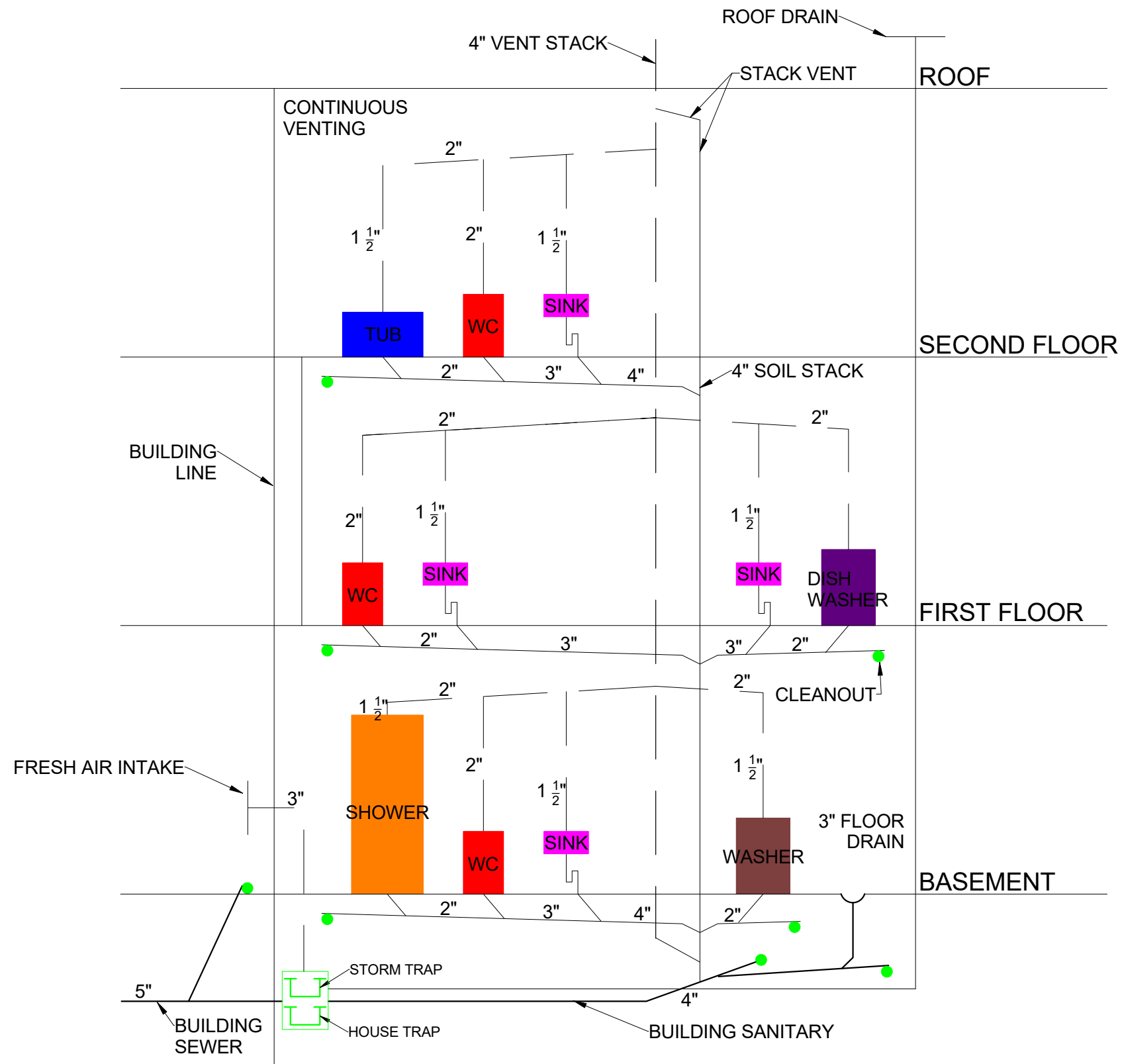


www.autodesk.com/revit

RESIDENTIAL HOUSE

No.	Description	Date

SECOND FLOOR HEATING PLAN		M800.13
PLAN	ber 1	
Date	Issue Date	
Drawn by	AQIB BHATTI	
Checked by	ROBERT BRYCE	
Scale 1/4" = 1'-0"		



www.autodesk.com/revit

RESIDENTIAL HOUSE

No.	Description	Date

PLUMBING RISER DIAGRAM

Project number	1	M800.20
Date	Issue Date	
Drawn by	AQIB BHATTI	
Checked by	ROBERT BRYCE	
Scale		

	A	B	C	D	E	F	G	H	I	J	K
1	ITEM	AREA (SQFT)	THICKNESS	U VALUE	R VALUE	R CAVITY	R STUD	Q CAVITY	Q STUD	Q VALUE	ΔT
2	FIRST FLOOR WALL	868.73									75
3	OUTSIDE AIR FILM	80%=694.98		5.88	0.17	0.17	0.17				
4	EXTERIOR RIGID INSULATION	20%=173.746	1"	0.28	3.6	3.6	3.6				
5	AIRSPACE WITH FURRING CHANNEL		1"	0.83	1.2	1.2	1.2				
6	VAPOR BARRIER		NEG.	NEG.	NEG.	0	0				
7	PLYWOOD SHEATHING		3/4"	1.06	0.94	0.94	0.94				
8	WOOD STUD (2X4)		3 1/2"	0.23	4.35	0	4.35				
9	BATT INSULATION		3 1/2"	0.05	21	21	0				
10	GYPSUM WALL BOARD		1/2"	3.13	0.32	0.32	0.32				
11	INSIDE AIR FILM			1.47	0.68	0.68	0.68				
12				U CAV=0.036		27.91	11.26	1822.45	1159.75	2982.2	
13				USTUD=0.089							
14											
15	SECOND FLOOR WALL	1129.41									75
16	OUTSIDE AIR FILM	80%=903.528		5.88	0.17	0.17	0.17				
17	WOOD CLADDING	20%=225.882	1/2"	2.94	0.34	0.34	0.34				
18	WOOD BATTENS		1 1/2"	0.53	1.89	1.89	1.89				
19	VAPOR BARRIER		NEG.	NEG.	NEG.	0	0				
20	PLYWOOD SHEATHING		3/4"	1.06	0.94	0.94	0.94				
21	WOOD STUD (2X4)		3 1/2"	0.23	4.35	0	4.35				
22	BATT INSULATION		3 1/2"	0.05	21	21	0				
23	GYPSUM BOARD		1/2"	3.13	0.32	0.32	0.32				
24	INSIDE AIR FILM			1.47	0.68	0.68	0.68				
25				U CAV=0.039		25.34	8.69	2642.82	1948.23	4591.05	
26				USTUD=0.115							
27											
28	CURTAIN WALL	146.41									75
29	OUTSIDE AIR FILM			5.88	0.17						
30	CURTAIN WALL			0.39	2.56						
31	INSIDE AIR FILM			1.47	0.68						
32				0.293	3.41					3217.36	
33											

	A	B	C	D	E	F	G	H	I	J	K
34	BASEMENT WALL ABOVE GRADE	79.65									75
35	OUTSIDE AIR FILM			5.88	0.17						
36	CONCRETE (120/LB/FT3)		3 1/2"	1.50	0.665						
37	GYPSUM WALL		1/2"	3.13	0.32						
38	INSIDE AIR FILM			1.47	0.68						
39				0.545	1.835					3255.69	
40											
41	WINDOW TYPE 1 (3X6)	90									75
42	OUTSIDE AIR FILM			5.88	0.17						
43	WINDOW			0.6496	1.5394						
44	INSIDE AIR FILM			1.47	0.68						
45				0.419	2.3894					2828.25	
46											
47	WINDOW TYPE 2 (7'1X5)	141.68									75
48	OUTSIDE AIR FILM			5.88	0.17						
49	WINDOW			0.25	4						
50	INSIDE AIR FILM			1.47	0.68						
51				0.206	4.85					2188.96	
52											
53	WINDOW TYPE 3 (6'X4'5")	26.5									75
54	OUTSIDE AIR FILM			5.88	0.17						
55	WINDOW			0.25	4						
56	INSIDE AIR FILM			1.47	0.68						
57				0.206	4.85					409.425	
58											
59	WINDOW TYPE 4 (5'11"X5')	29.58									75
60	OUTSIDE AIR FILM			5.88	0.17						
61	WINDOW			0.25	4						
62	INSIDE AIR FILM			1.47	0.68						
63				0.206	4.85					457.01	
64											
65	WINDOW TYPE 5 (5'1"X4'5")	44.9									75
66	OUTSIDE AIR FILM			5.88	0.17						

	A	B	C	D	E	F	G	H	I	J	K
67	WINDOW			0.25	4						
68	INSIDE AIR FILM			1.47	0.68						
69				0.206	4.85					693.705	
70											
71	ENTRANCE DOOR (6'X8')	48									75
72	OUTSIDE AIR FILM			5.88	0.17						
73	DOOR			2.5	4						
74	INSIDE AIR FILM			1.47	0.68						
75				0.206	4.85					741.6	
76											
77	REAR DOOR (3'X8')	24									75
78	OUTSIDE AIR FILM			5.88	0.17						
79	DOOR			2.5	4						
80	INSIDE AIR FILM			1.47	0.68						
81				0.206	4.85					370.8	
82											
83	CURTAIN WALL DOOR (4'6"X7'8 1/4")	34.59									75
84	OUTSIDE AIR FILM			5.88	0.17						
85	DOOR			0.39	2.56						
86	INSIDE AIR FILM			1.47	0.68						
87				0.293	3.4141026					760.12	
88											
89	ROOF	702.18									75
90	OUTSIDE AIR FILM	80%=561.744		5.88	0.17	0.17	0.17				
91	ASHPHALT SHINGLE	20%=140.436	1/4"	2.27	0.44	0.44	0.44				
92	PLYWOOD SHEATHING		5/8"	1.28	0.78	0.78	0.78				
93	WOOD RAFTER (2X8)		7 1/4"	0.11	9.45	0	9.45				
94	BATT INSULATION		7 1/4"	0.05	19	19	0				
95	PLYWOOD SHEATHING		5/8"	1.28	0.78	0.78	0.78				
96	GYPSTUM WALL BOARD		5/8"	2.56	0.39	0.39	0.39				
97	INSIDE AIR FILM			1.47	0.68	0.68	0.68				
98				U CAV=0.045		22.24	12.69	1895.89	832.08	2727.97	
99				USTUD=0.079							

	A	B	C	D	E	F	G	H	I	J	K
100											
101	BALCONY	178.69									75
102	OUTSIDE AIR FILM	80%=142.952		5.88	0.17	0.17	0.17				
103	CONCRETE PAVER	20%=35.738	1 1/2"	3.51	0.285	0.285	0.285				
104	AIR SPACE FOR PEDESTALS		2"	0.88	1.13	1.13	1.13				
105	RIGID INSULATION		1"	0.15	6.5	6.5	6.5				
106	ASHPHALT ROLL ROOFING		NEG.	6.67	0.15	0.15	0.15				
107	PLYWOOD SHEATHING		5/8"	1.28	0.78	0.78	0.78				
108	WOOD JOIST (2X8)		7 1/4"	0.11	9.45	0	9.45				
109	BATT INSULATION		7 1/4"	0.05	19	19	0				
110	GYPSUM		3/4"	2.13	0.47	0.47	0.47				
111	INSIDE AIR FILM			1.47	0.68	0.68	0.68				
112				U CAV=0.034		29.165	19.615	364.53	136.7	501.23	
113				USTUD=0.051							
114											
115	FIRST FLOOR BOND	76.87									75
116	OUTSIDE AIR FILM			5.88	0.17						
117	EXTERIOR RIGID INSULATION		1"	0.28	3.6						
118	AIRSPACE WITH FURRING CHANNEL		1"	0.83	1.2						
119	VAPOR BARRIER		NEG.	NEG.	0						
120	PLYWOOD SHEATHING		3/4"	1.06	0.94						
121	WOOD JOIST (2X6)		1 1/2"	0.53	1.89						
122	BATT INSULATION			0.04	23						
123				0.032	30.8					184.49	
124											
125	SECOND FLOOR BOND	54.28									75
126	OUTSIDE AIR FILM			5.88	0.17						
127	EXTERIOR RIGID INSULATION		1"	0.28	3.6						
128	AIRSPACE WITH FURRING CHANNEL		1"	0.83	1.2						
129	VAPOR BARRIER		NEG.	NEG.	0						
130	PLYWOOD SHEATHING		3/4"	1.06	0.94						
131	WOOD RAFTER (2X6)		1 1/2"	0.53	1.89						
132	BATT INSULATION			0.04	23						

	A	B	C	D	E	F	G	H	I	J	K
133				0.032	30.8					130.27	
134											
135	BALCONY FLOOR BOND	11.41									75
136	OUTSIDE AIR FILM			5.88	0.17						
137	EXTERIOR RIGID INSULATION		1"	0.28	3.6						
138	AIRSPACE WITH FURRING CHANNEL		1"	0.83	1.2						
139	FLUID VAPOR BARRIER		NEG.	NEG.	0						
140	PLYWOOD SHEATHING		3/4"	1.06	0.94						
141	WOOD RAFTER (2X8)		1 1/2"	0.53	1.89						
142	BATT INSULATION			0.05	19						
143				0.037	26.8					31.66	
144											
145	BALCONY STEP BOND	1.599									75
146	ASHPHALT ROLL ROOFING		NEG.		0						
147	PLYWOOD SHEATHING		3/4"	1.064	0.94						
148	WOOD JOIST (2X6)		1 1/2"	0.529	1.89						
149	BATT INSULATION			0.053	19						
150				0.046	21.83					5.52	
151											
152		AREA (SQFT)	FACTOR								
153	BASEMENT WALL BELOW GRADE	1039.22	4							4156.88	
154	BASEMENT FLOOR SLAB	825.42	2							1650.84	
155											
156		VOLUME CF	ΔT	FACTOR							
157	VENTILATION HEAT LOSS	21220.56	75	0.018						28647.76	
158											
159											
160	BOILER SELECTION	62K BTU BOILER								BLACK SWAN BTU 60532.79	
161											
162		BTU OUTPUT	QTY								
163	RADIATOR SELECTION	4380	15								
164	DEGREE DAYS	(60532.79/75) x 3996 x 24 = 74,404,489.23									
165	EUI	60532.79/2287.84=26.46 BTU/SQFT									