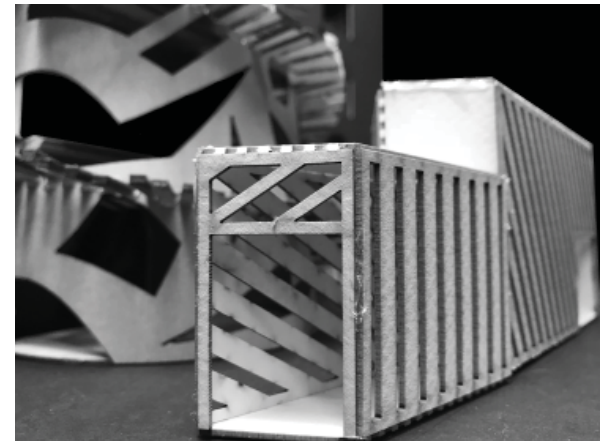
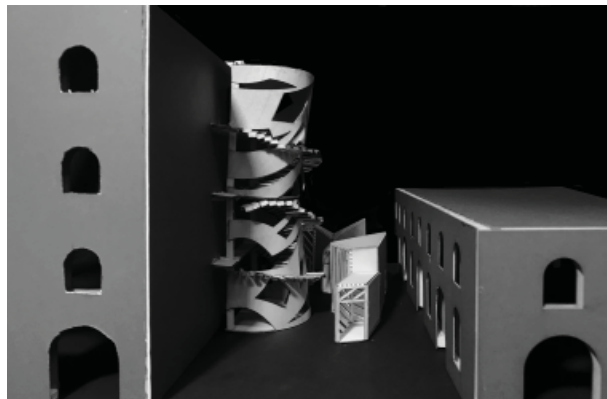
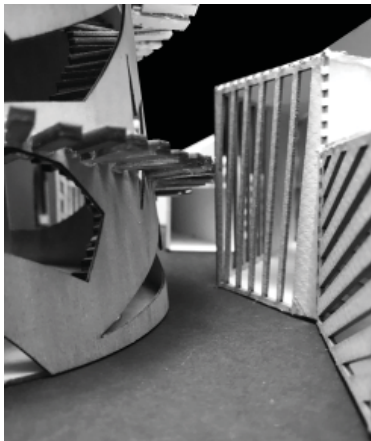
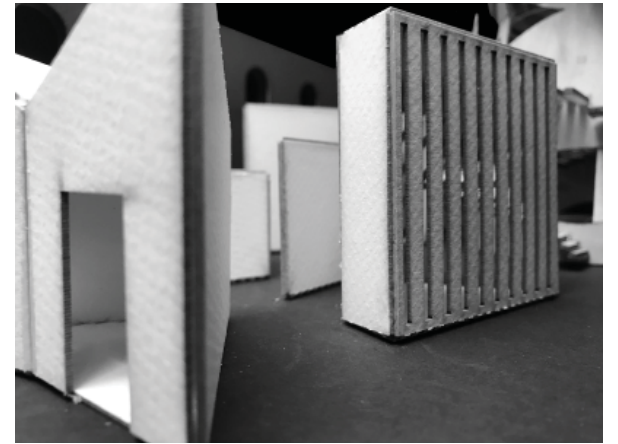
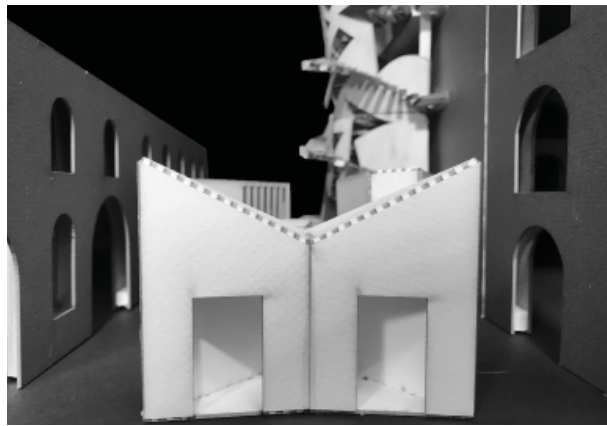
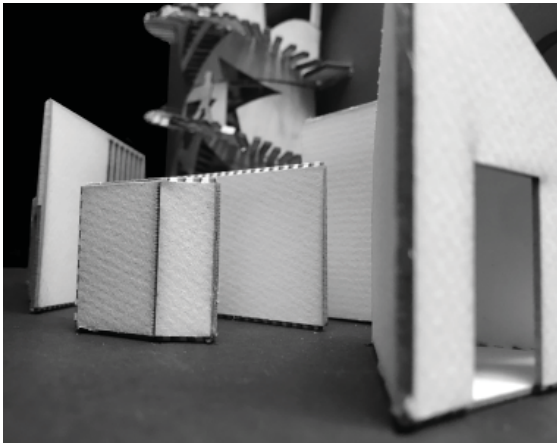
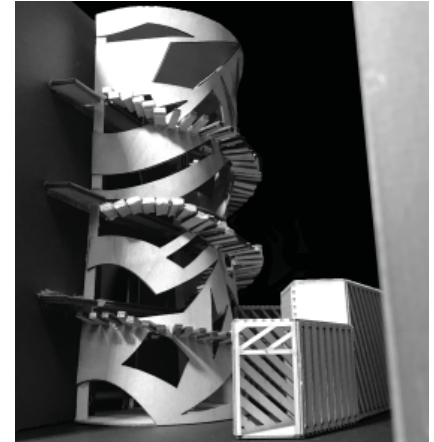
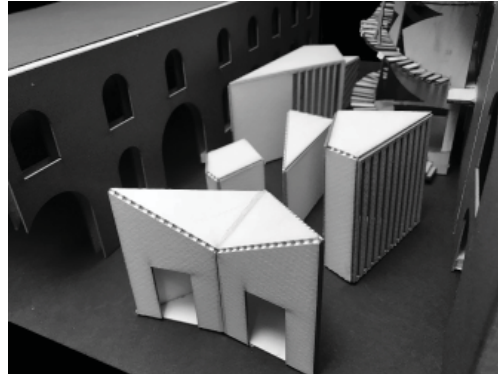
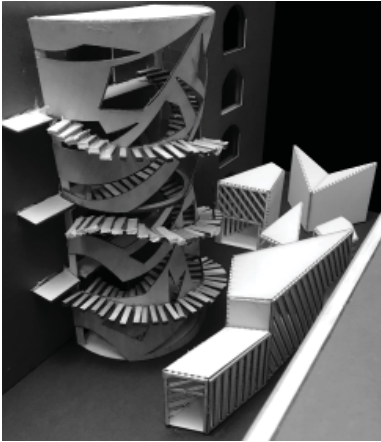


# SURFACE FACE & THRESHOLDS

Thresholds in my opinion are similar to theater curtains. In my project my idea was to use walls to limit views of those who are experiencing walking through this space. Entering through Water street i wanted to intimidate the viewer and when they reach the vertical stage they feel relief. It came to my attention from my peers critiques that my space felt claustro-phobic so i opened walls using thin lines. Over all i feel the thresholds compliment the vertical stage and the overall idea of controlled chaos is uniform.

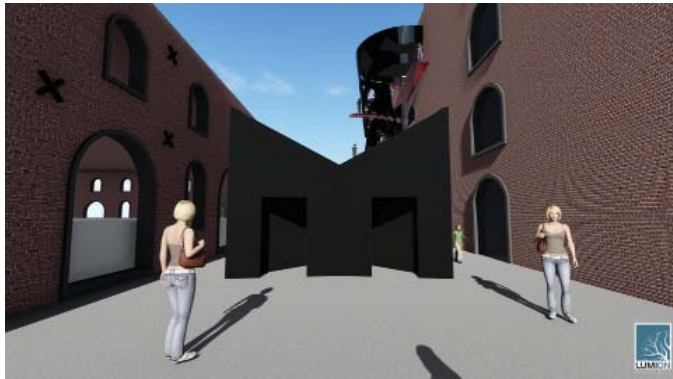
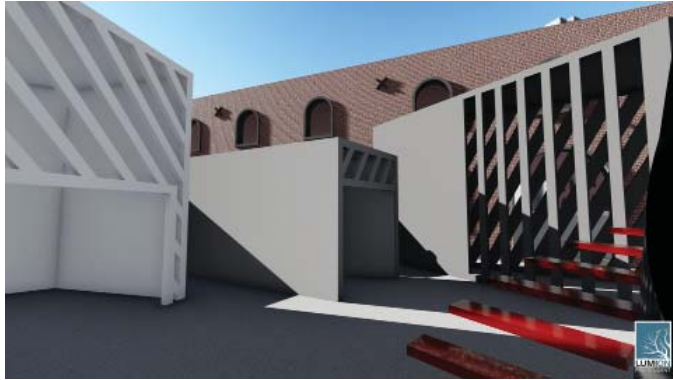


# FINAL MODEL



# LUMION RENDERS

DAYTIME



NIGHT TIME

