

FERRY TERMINAL

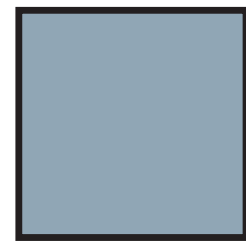
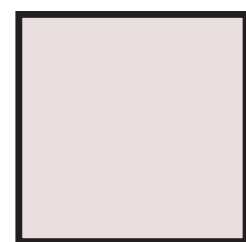
The design intent of this project was to develop a portal bridging the city to the river. The massing of the project was an abstraction of the side profile of a humpback whale, the floats represent the fins, and the façade was inspired by ventral pleats on whales. The façade also aids in bridging the city to the river by limiting the view of both while seamlessly combining the two. The circulation of the structure is unique as where it offers you direct route to the ferry while also allowing occupant to slow down and enjoy views in the seating area.

CONCEPT

INSPIRATION



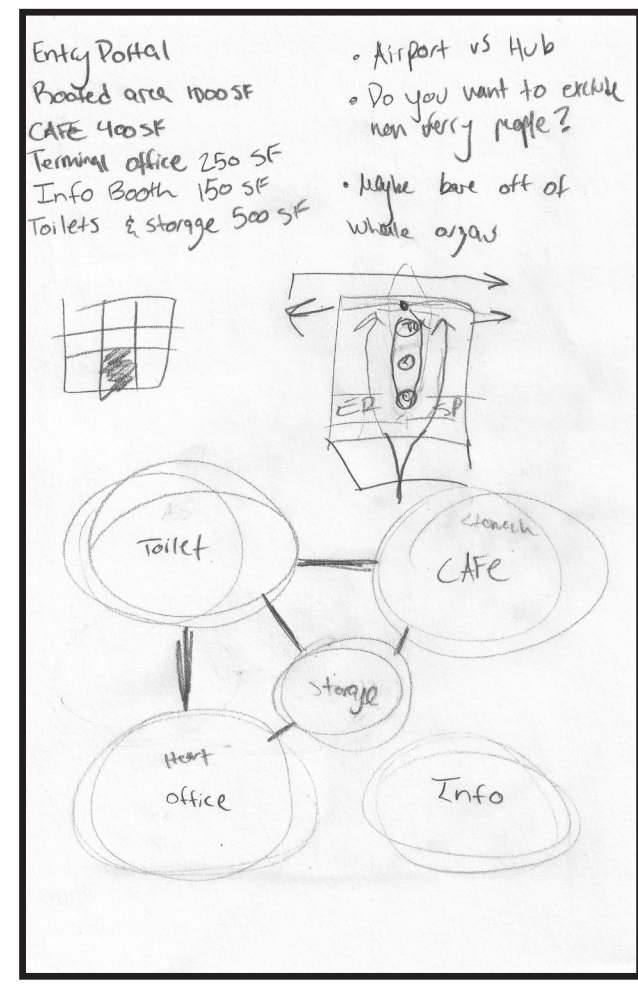
COLOR



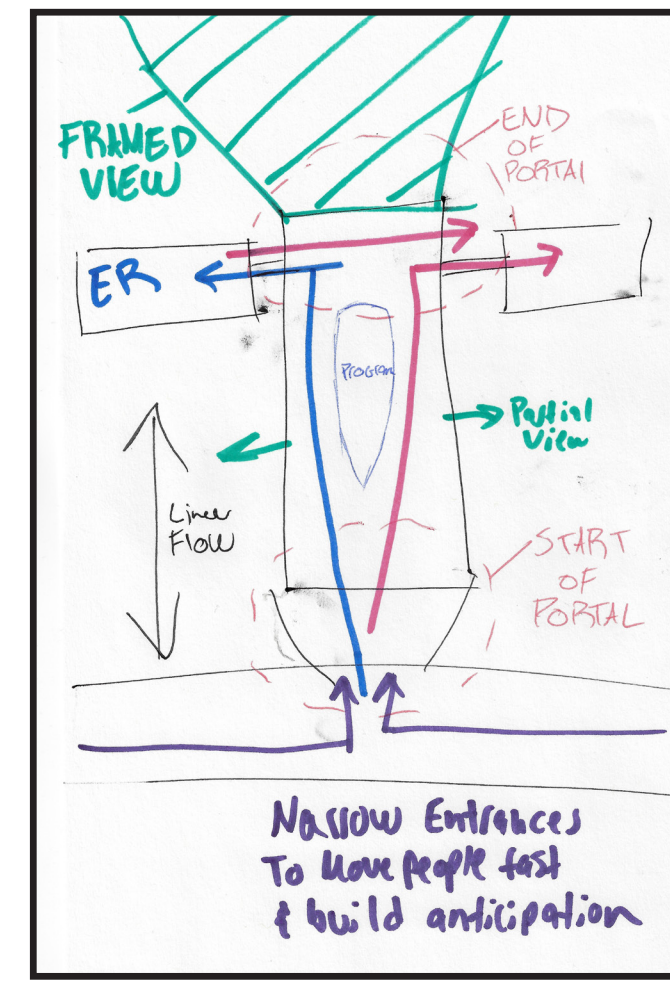
TEXTURES



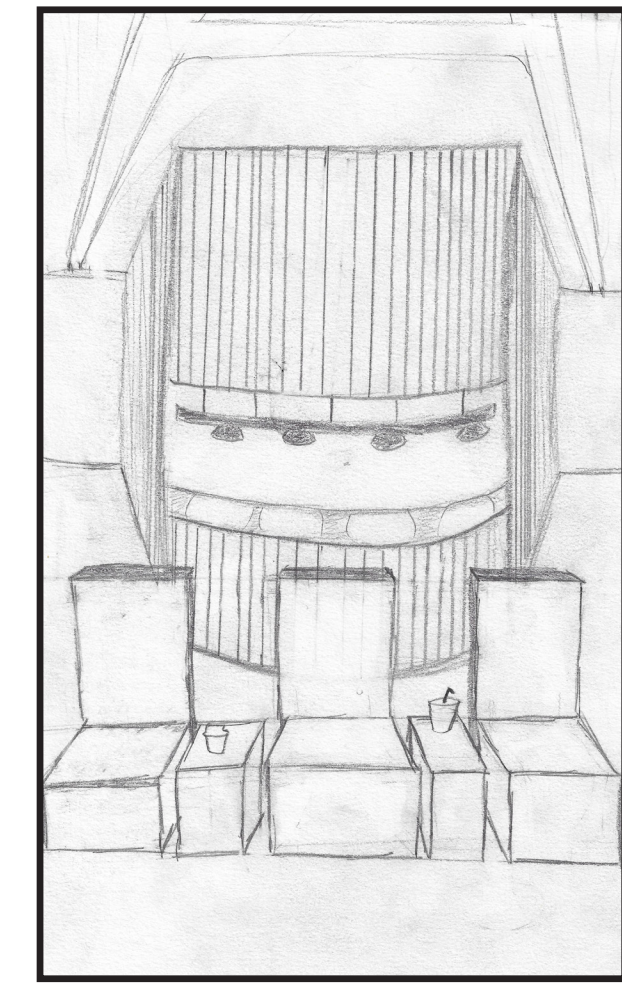
LAYOUT



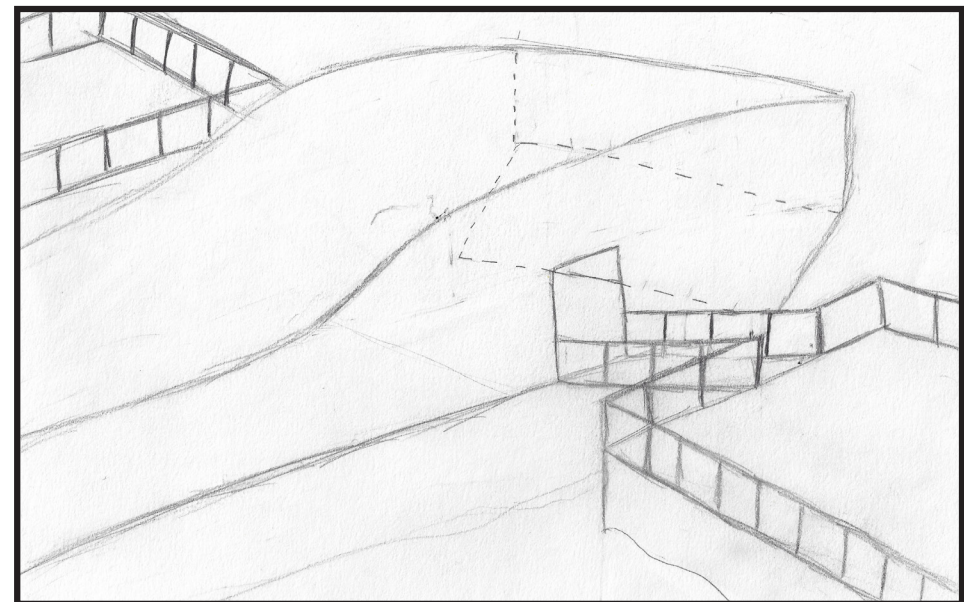
CIRCULATION



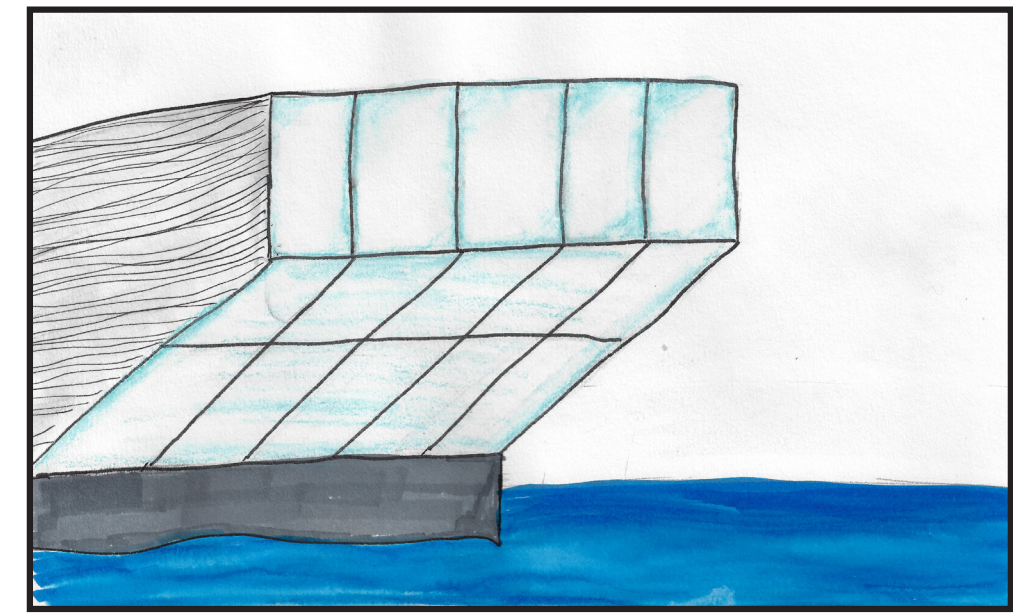
SKETCH



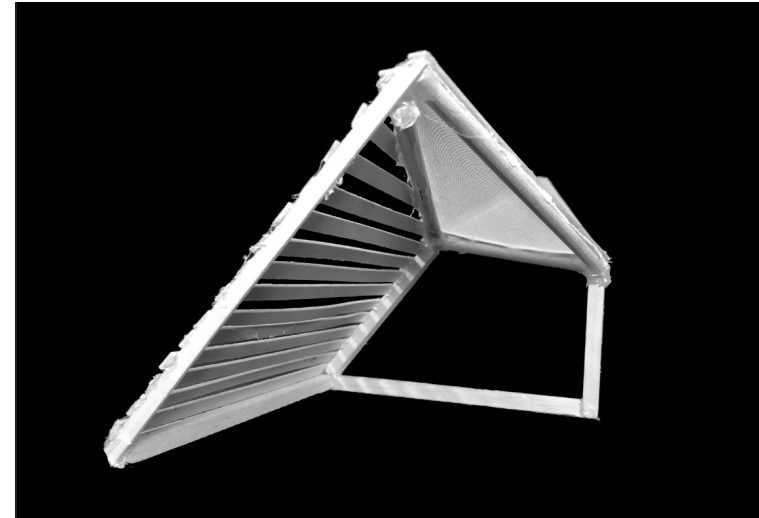
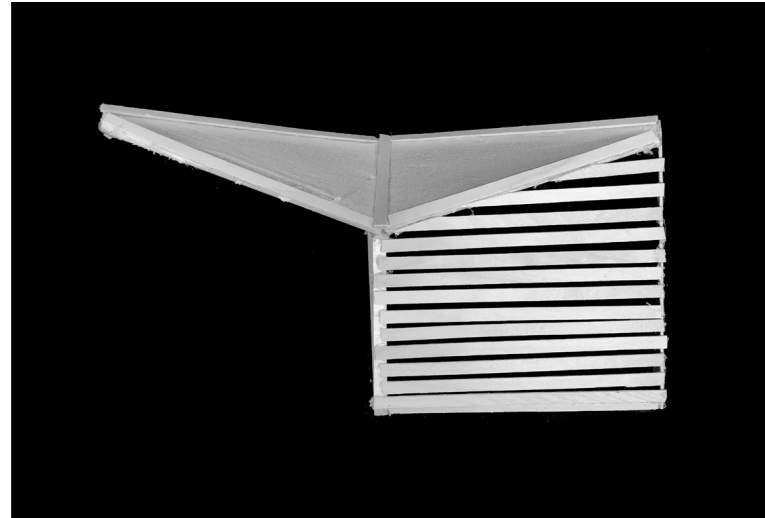
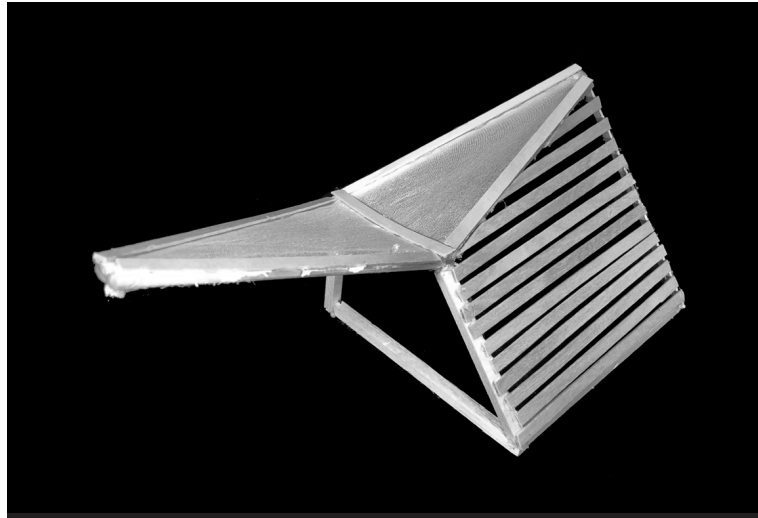
FORM



SKETCH

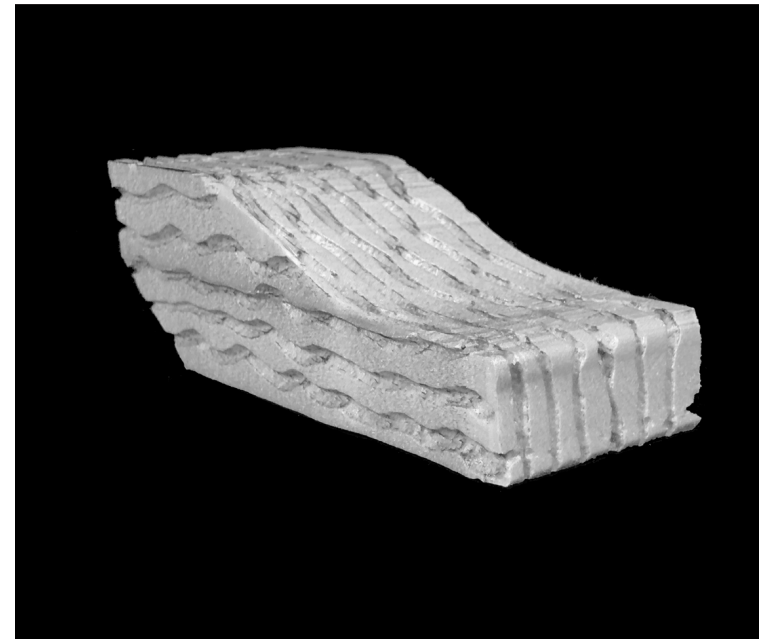
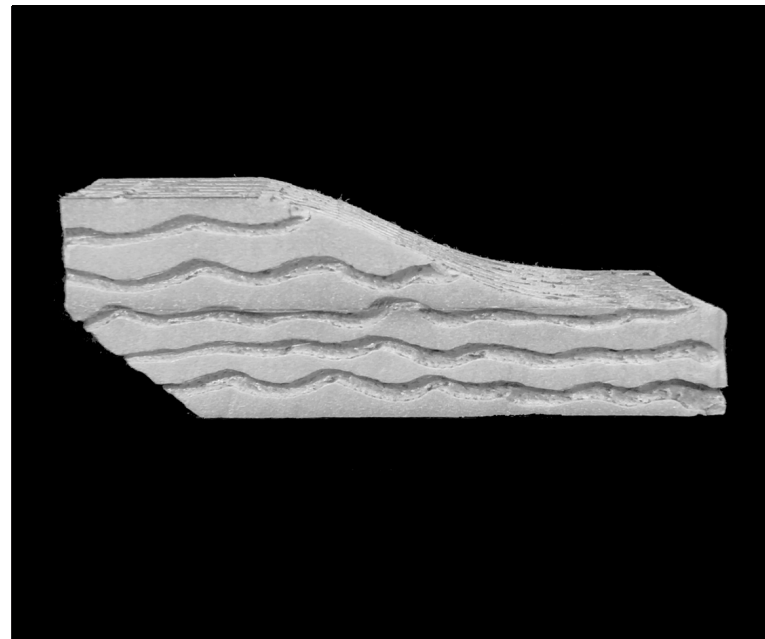


CONCEPT MODELS



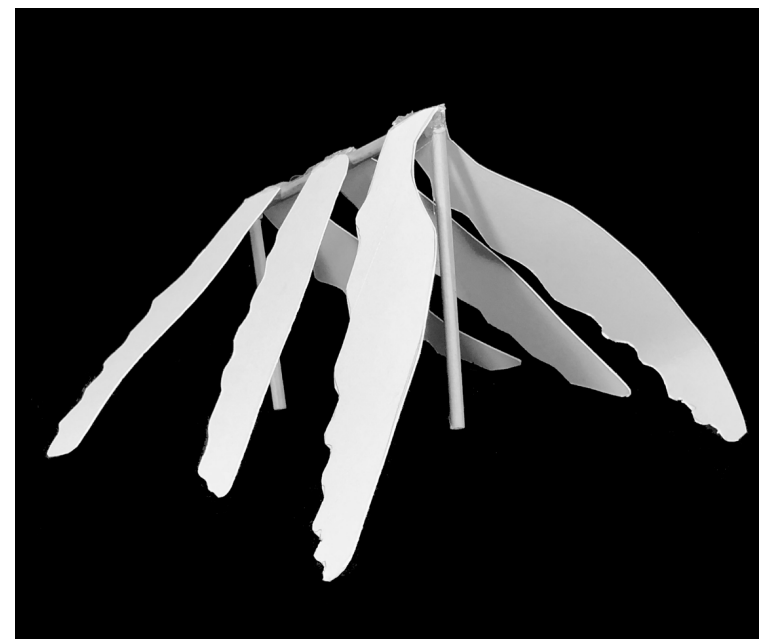
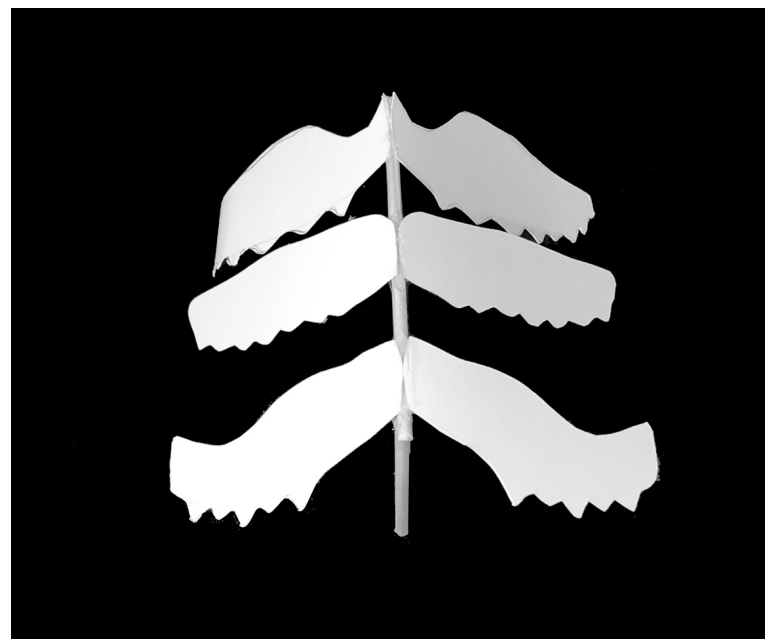
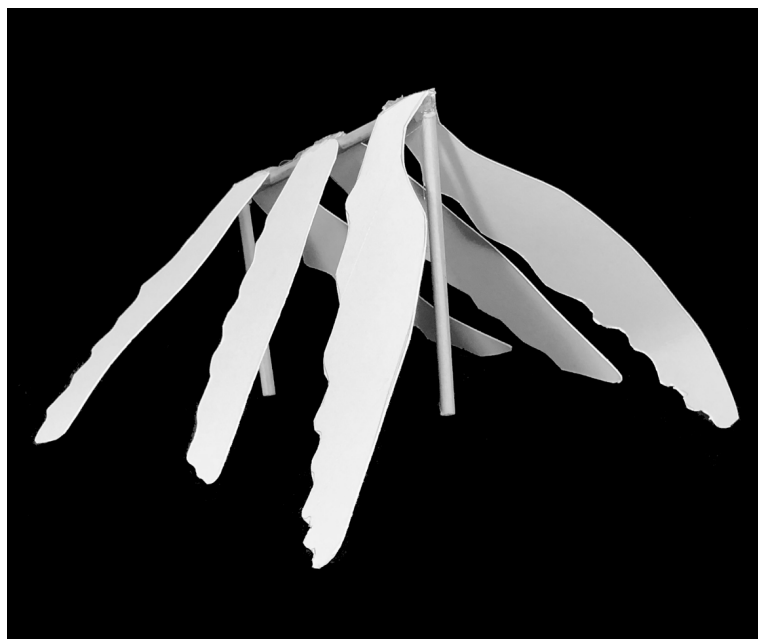
Tail

The canopy design was inspired by the form of a humpback whales' tail. It is more angular than curved compared to the whale's tail. Additionally, after the canopy was created, I played with adding walls to aid in the aesthetic of the tail.



Body

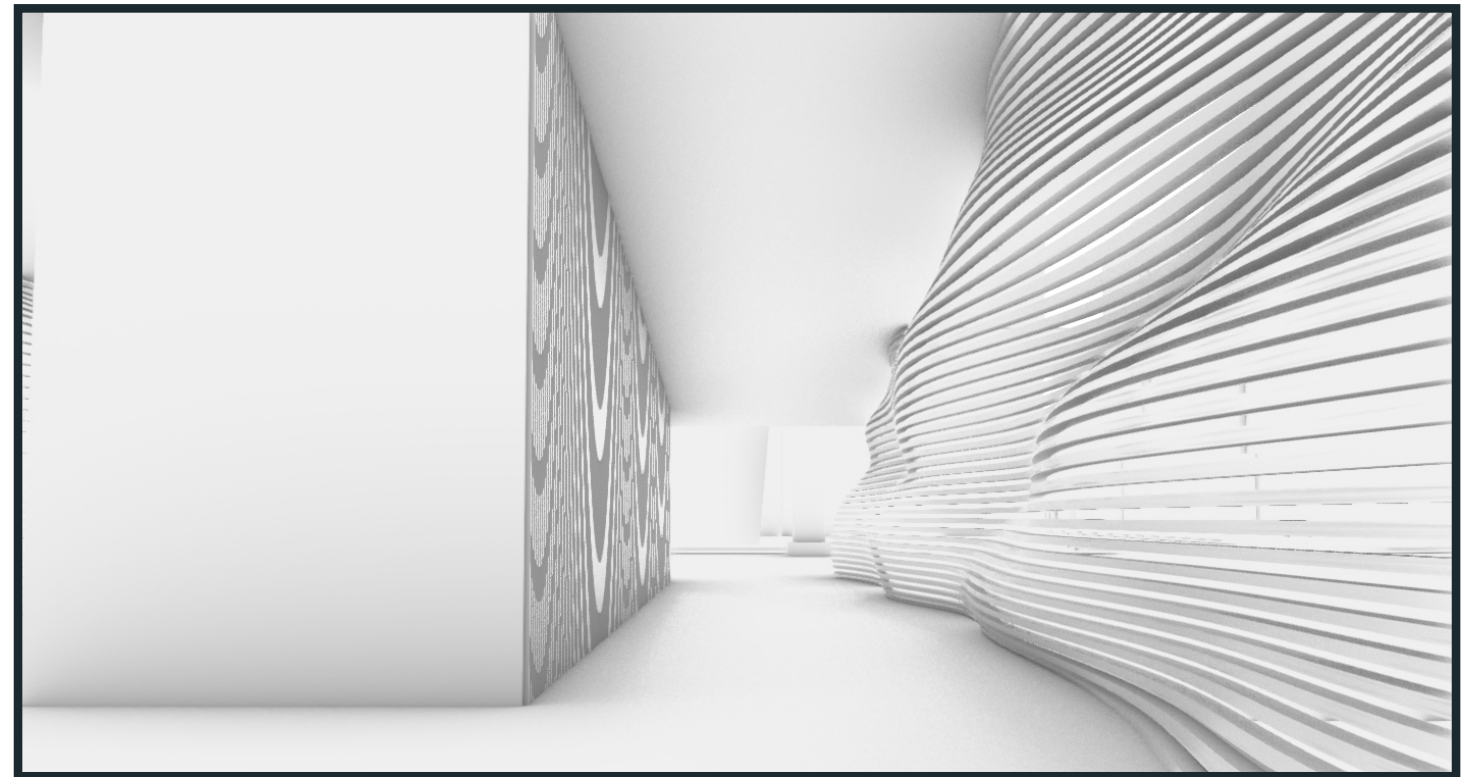
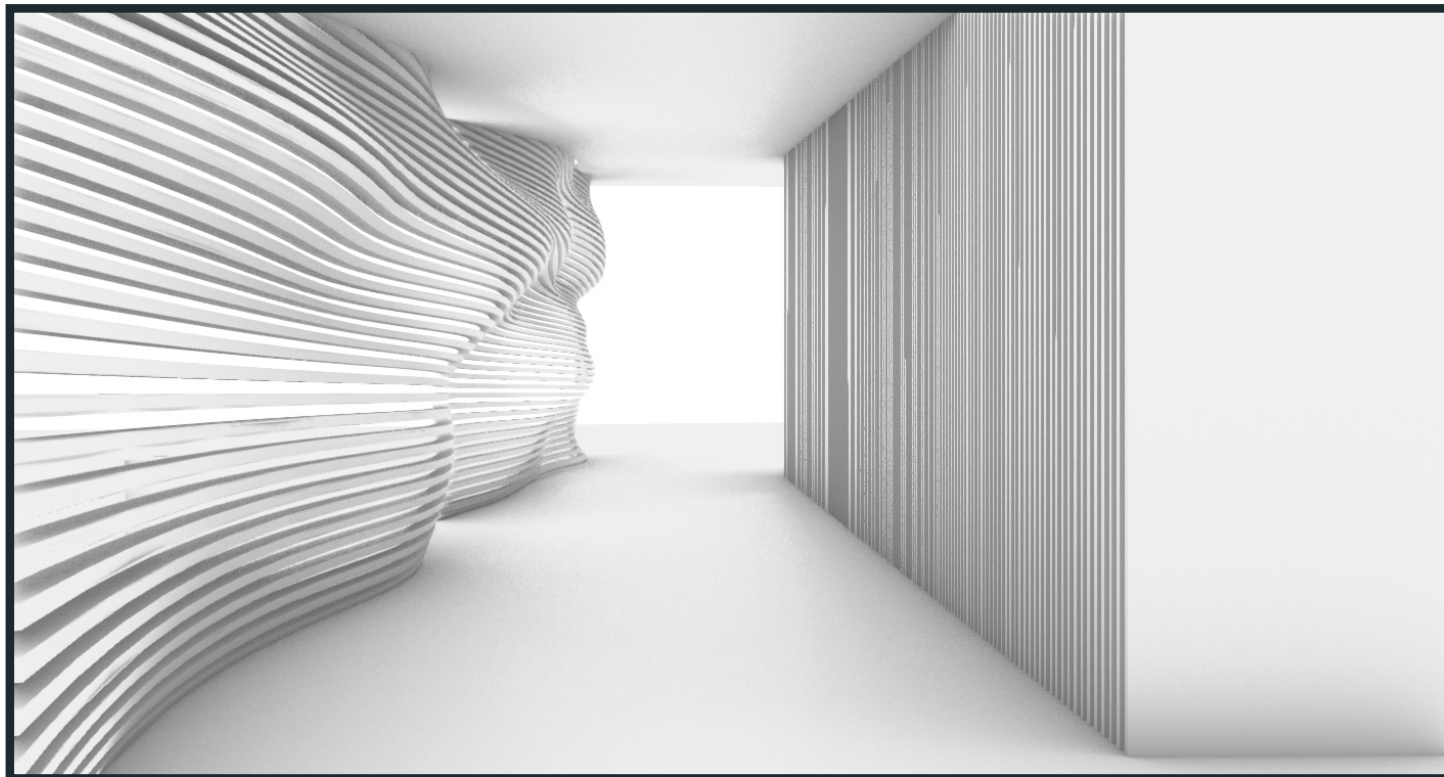
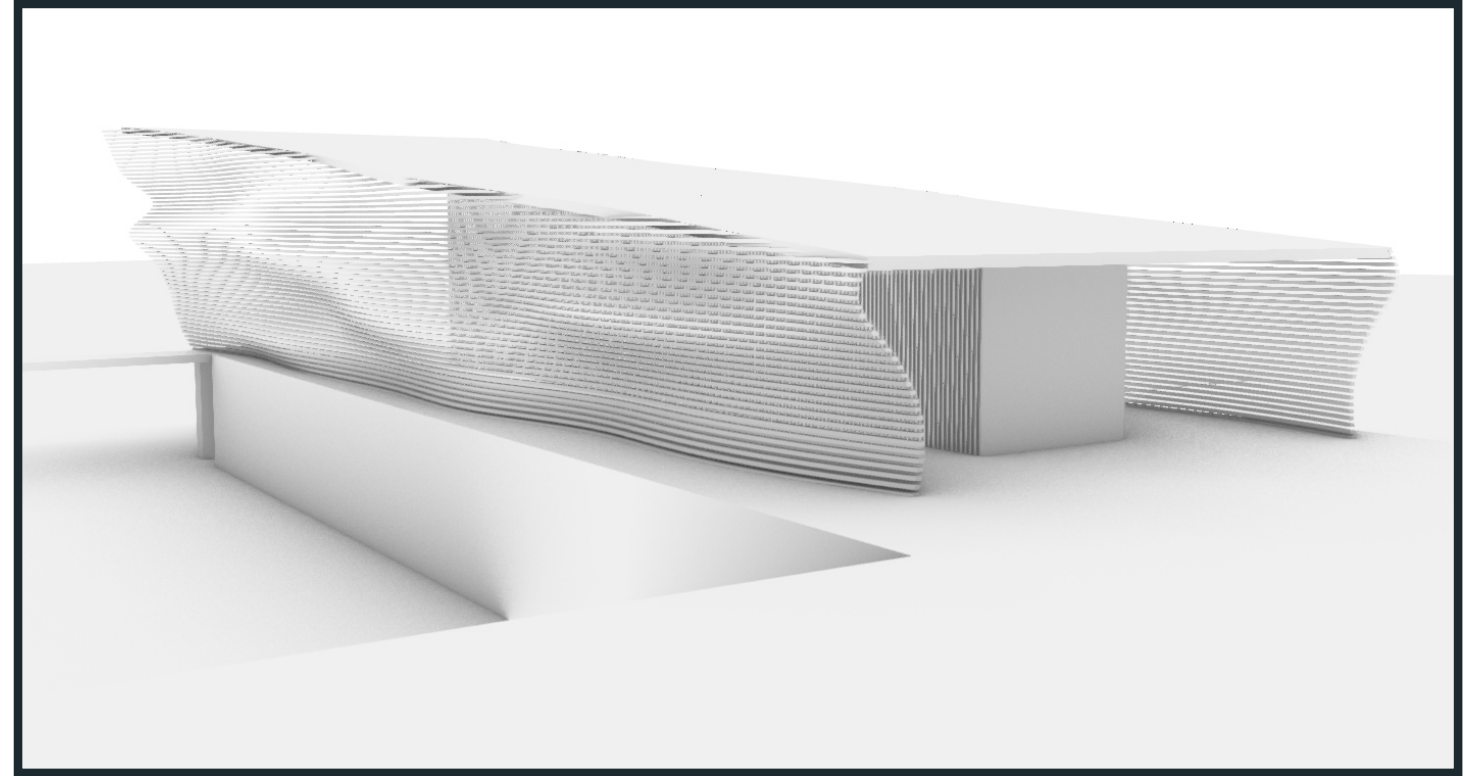
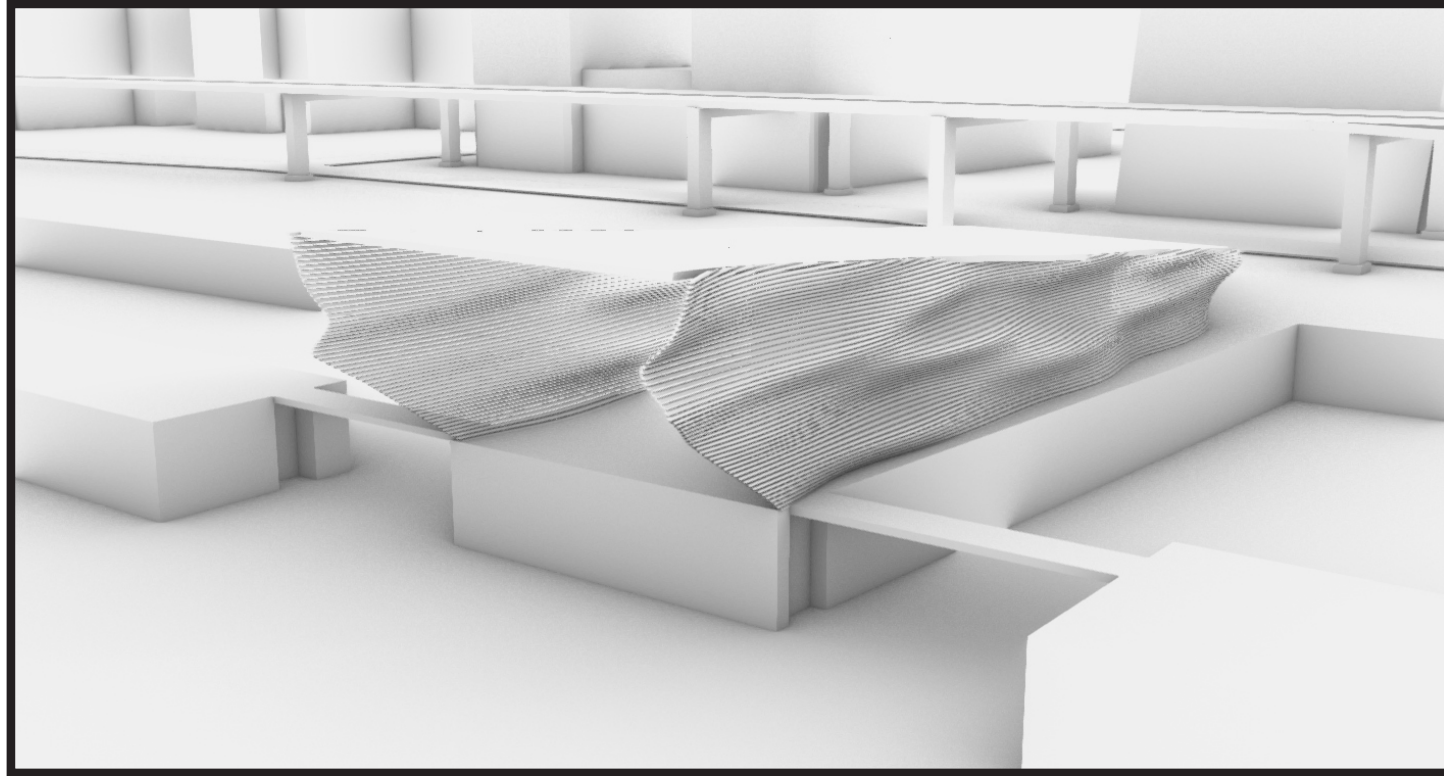
The form is an extreme abstraction of the whale's side profile. Using foam, aided in seeing a heavy mass similarly to a whale. Additionally, the lines were inspired by the ventral pleats. Overall this model had great sense of mass and direction



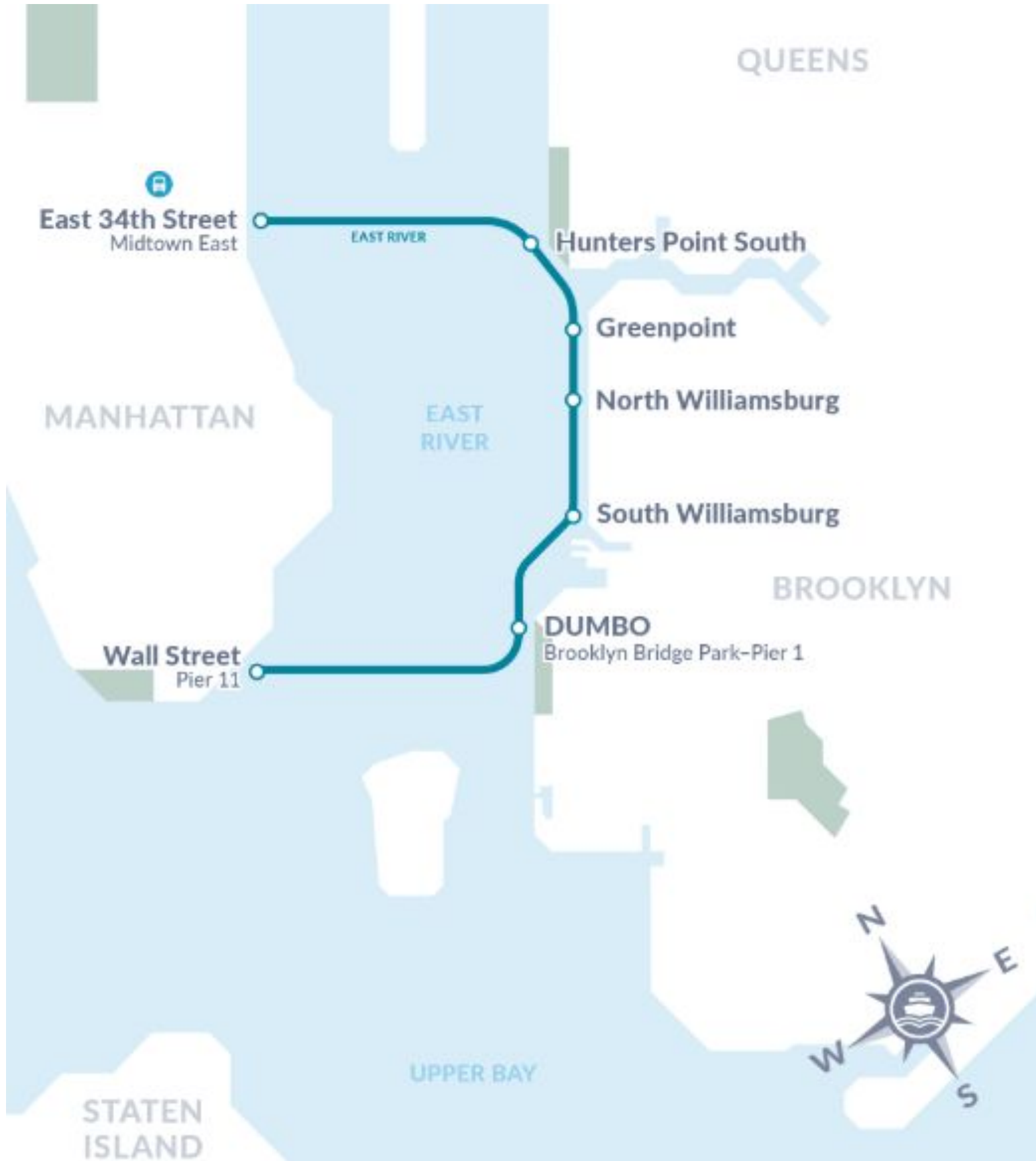
Fin

No one whale has the same fins. They vary in shape, length and tubercles (bumps on fins). I used different profiles of fins to create this model.

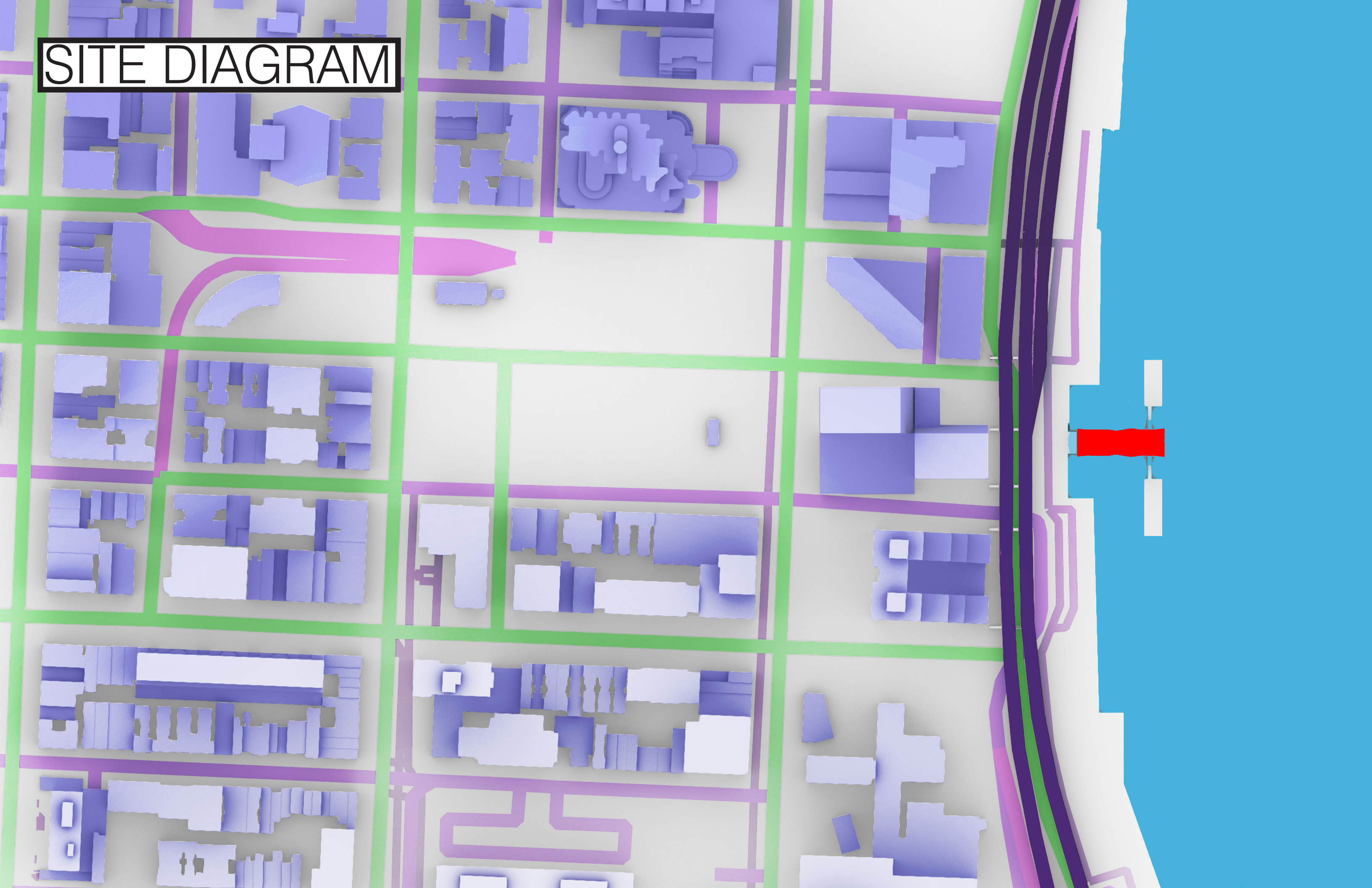
3D CONCEPT



TRANSPORTATION DIAGRAM

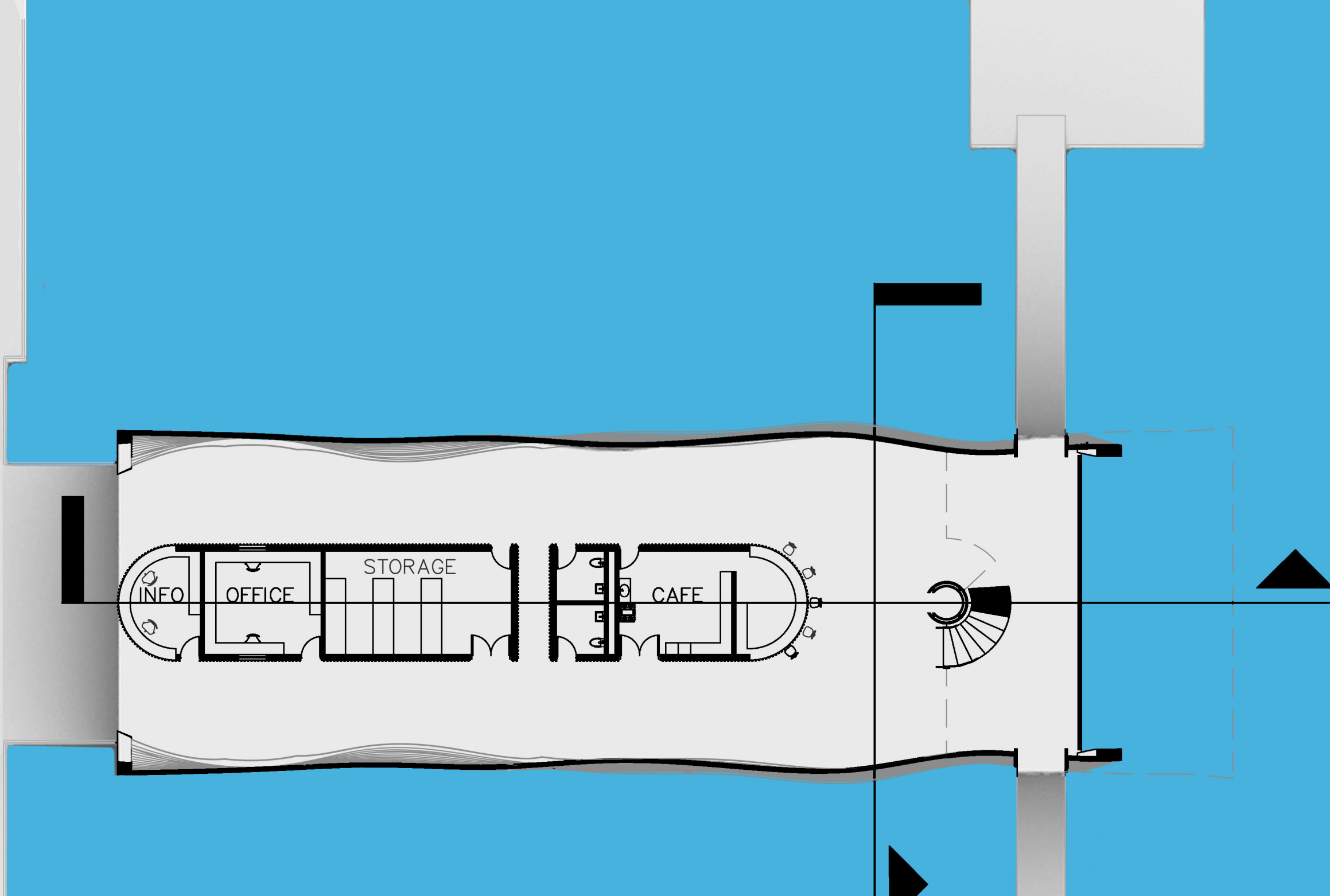


SITE DIAGRAM



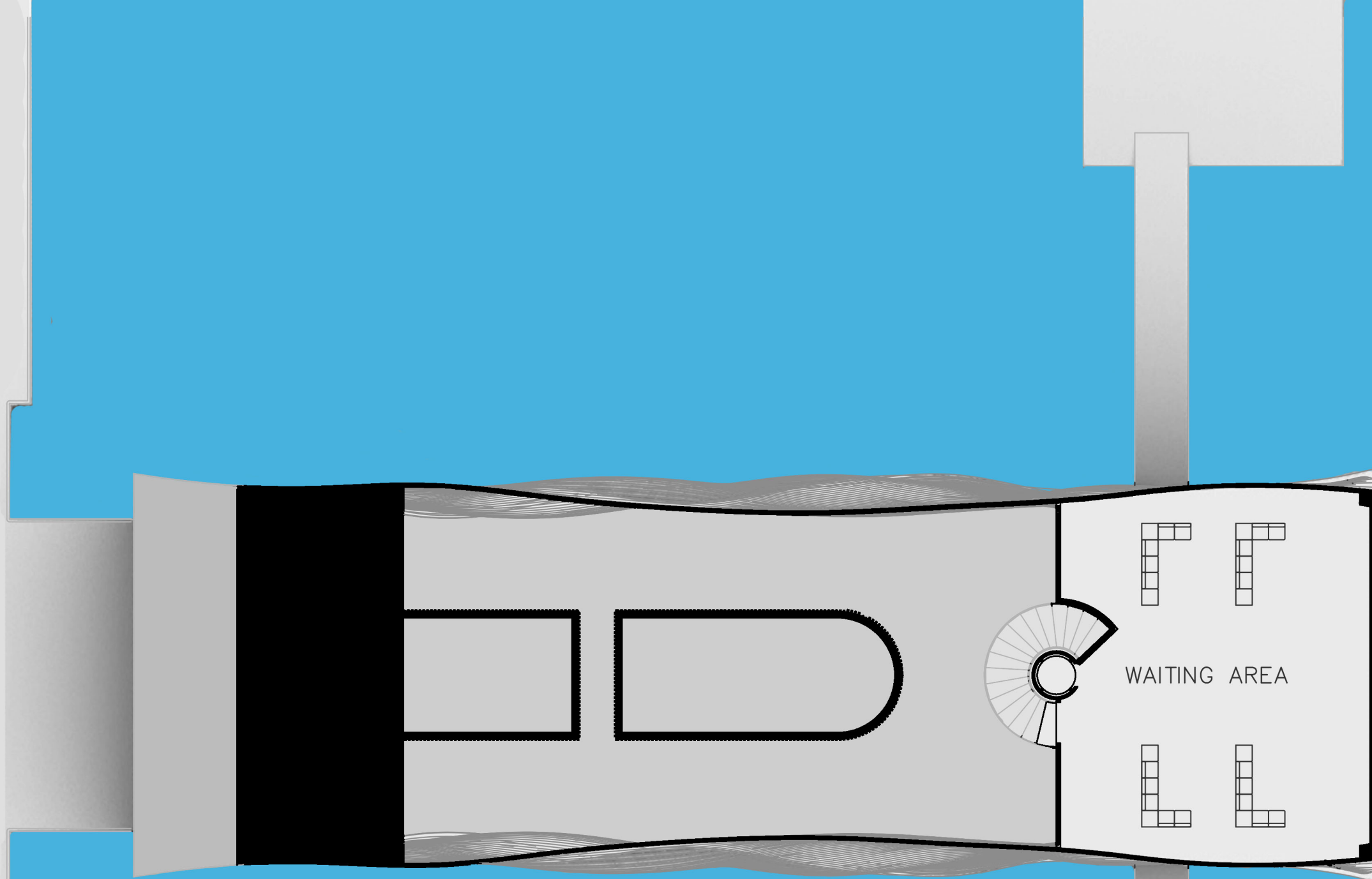
ROOF PLAN
1/16" = 1'-0"





FIRST FLOOR PLAN
1/16" = 1'-0"

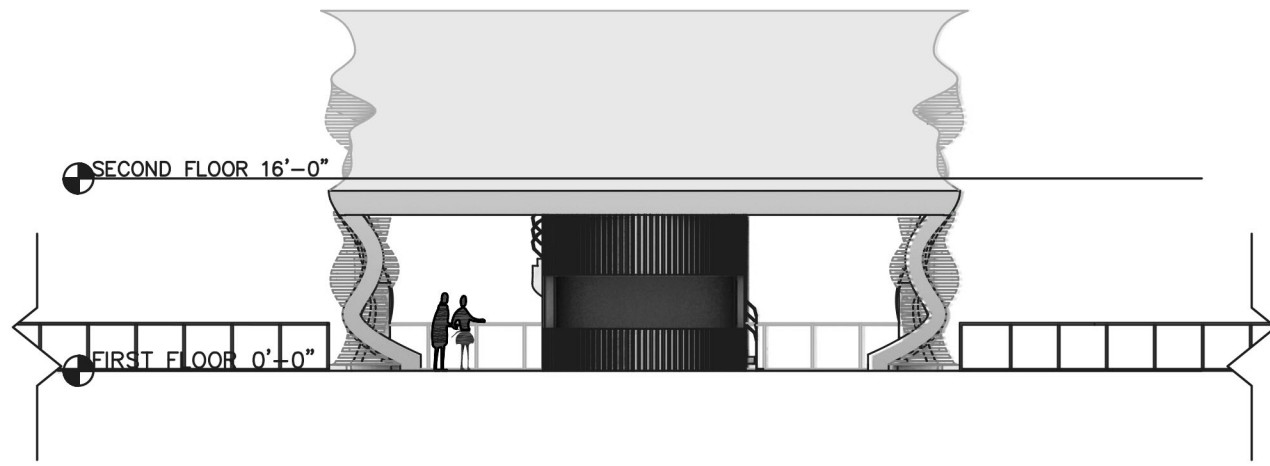




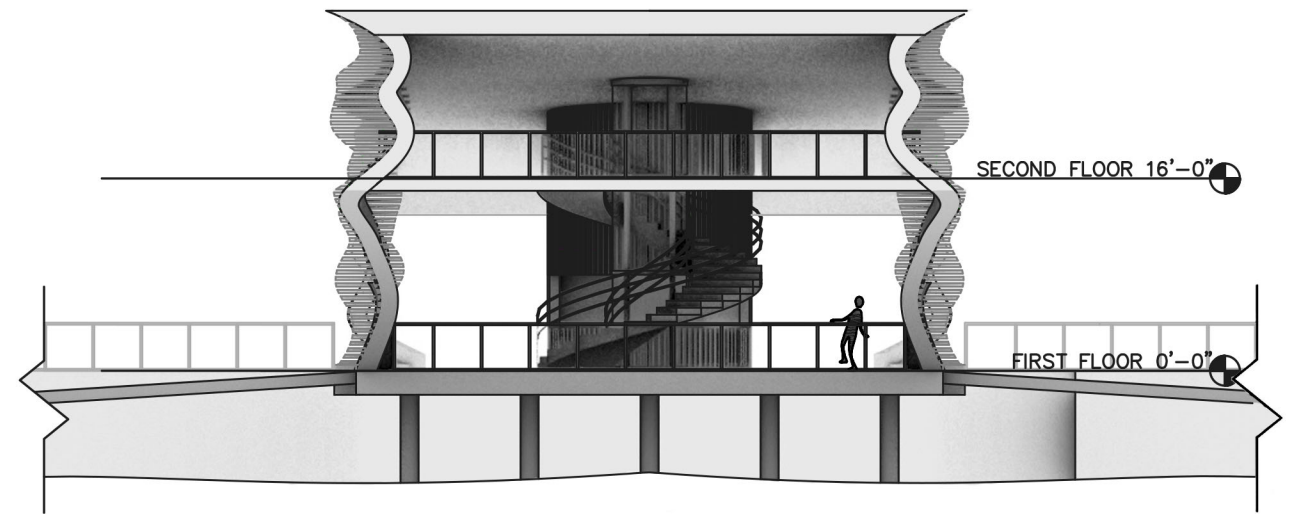
SECOND FLOOR PLAN

$1/16'' = 1' - 0''$

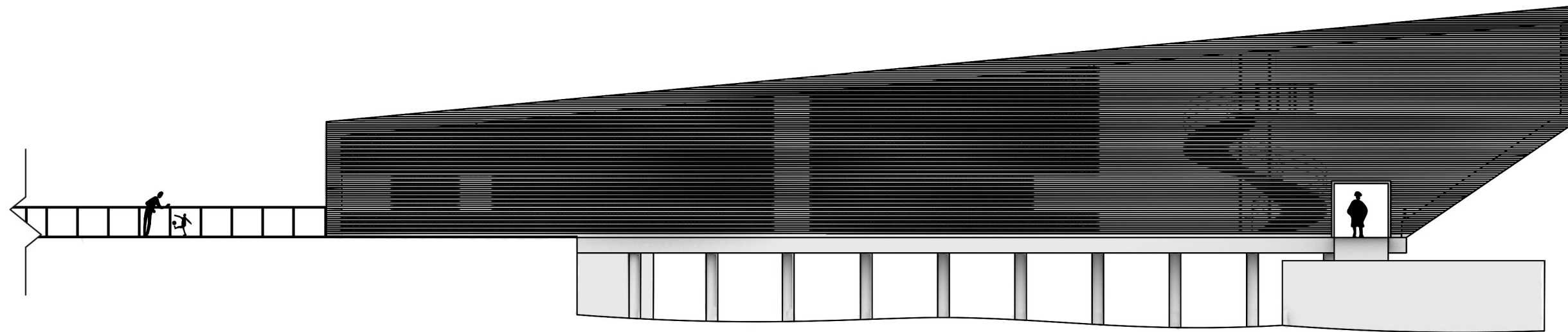




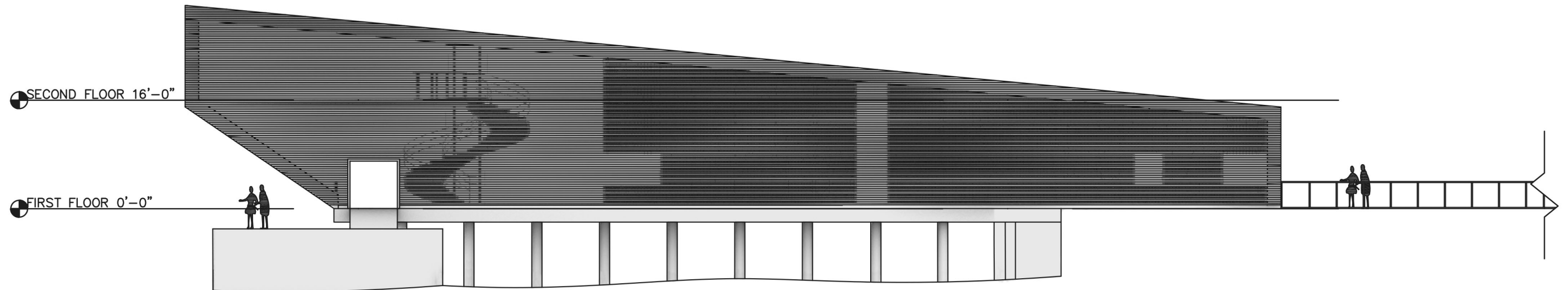
WEST ELEVATION
1/16"=1'-0"



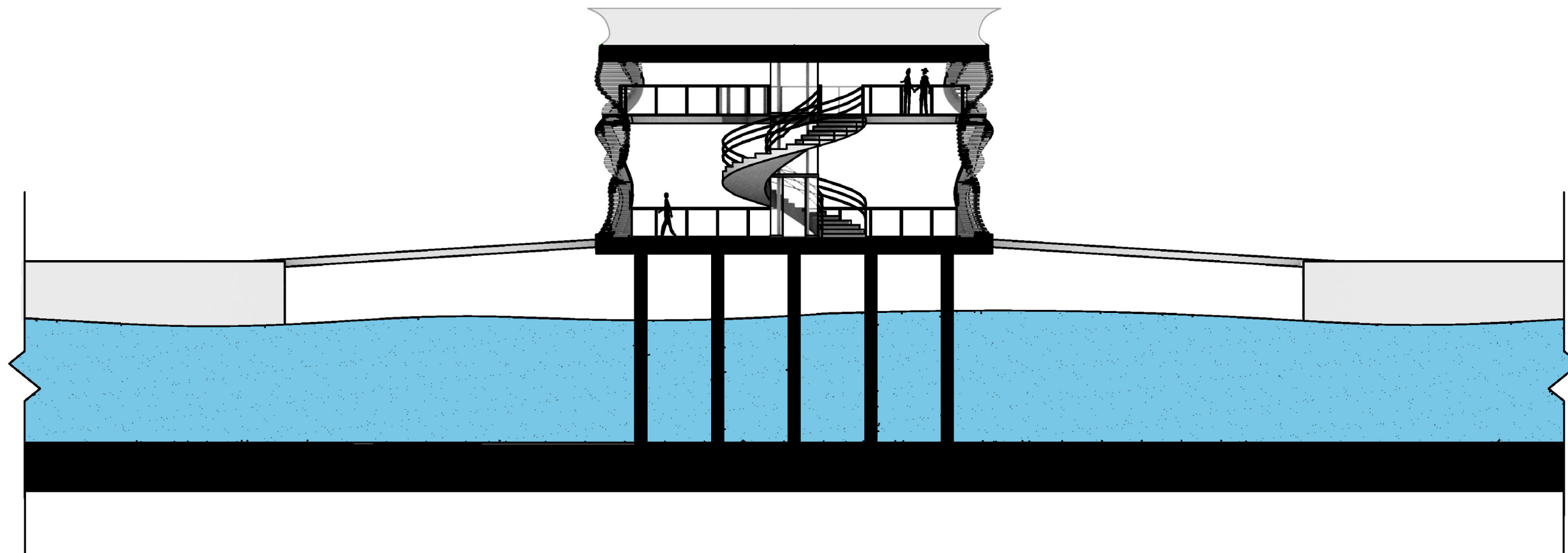
EAST ELEVATION
1/16"=1'-0"



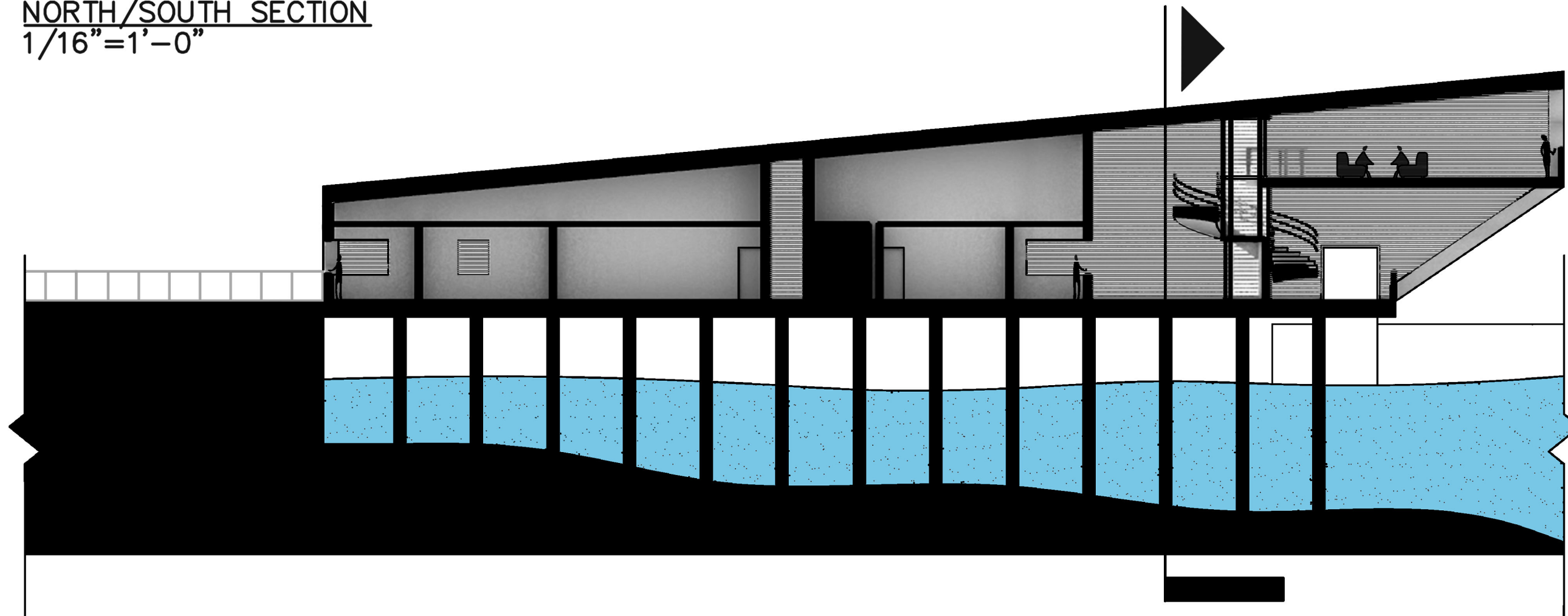
SOUTH ELEVATION
1/16"=1'-0"



NORTH ELEVATION
1/16"=1'-0"

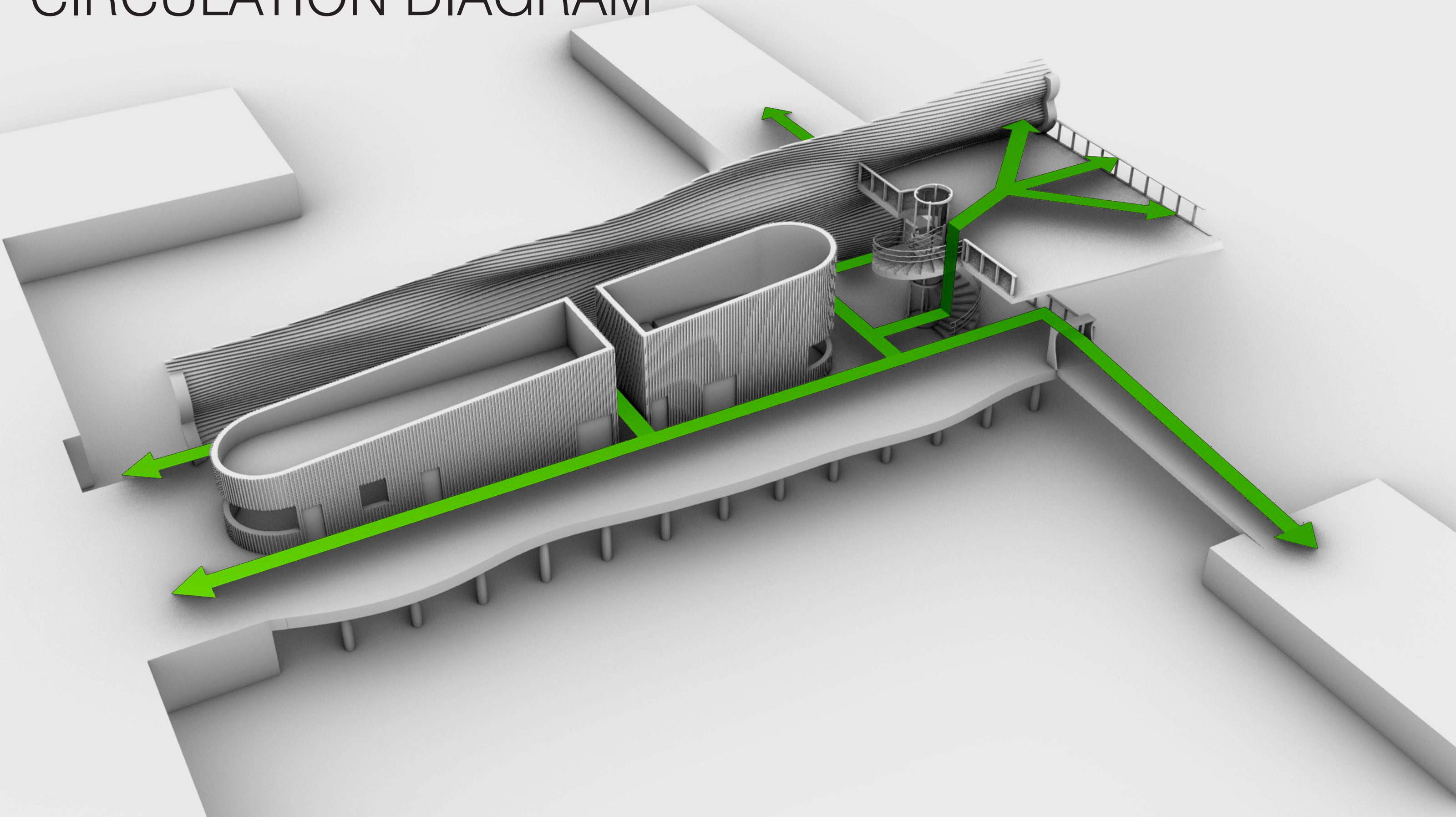


NORTH/SOUTH SECTION
1/16"=1'-0"

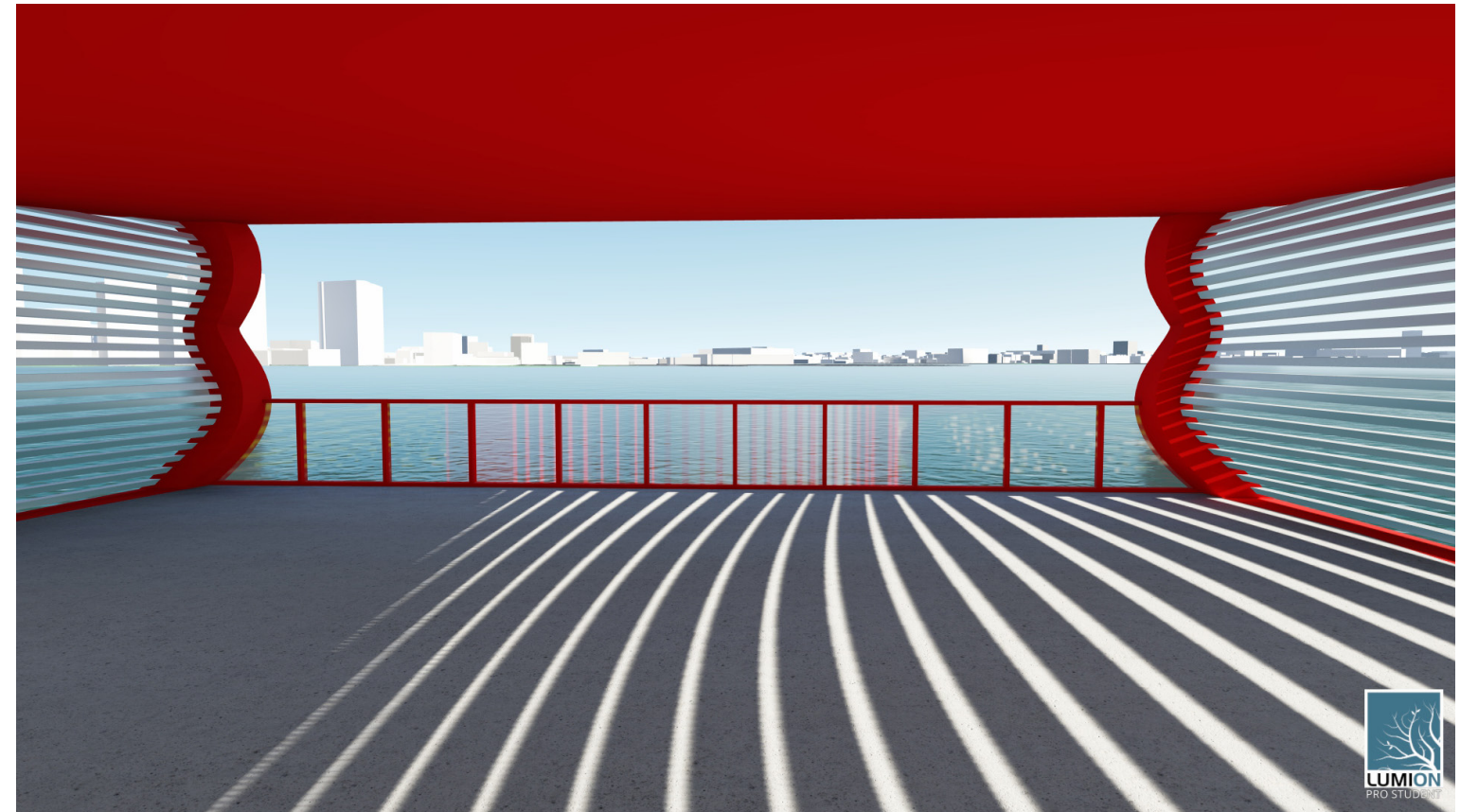
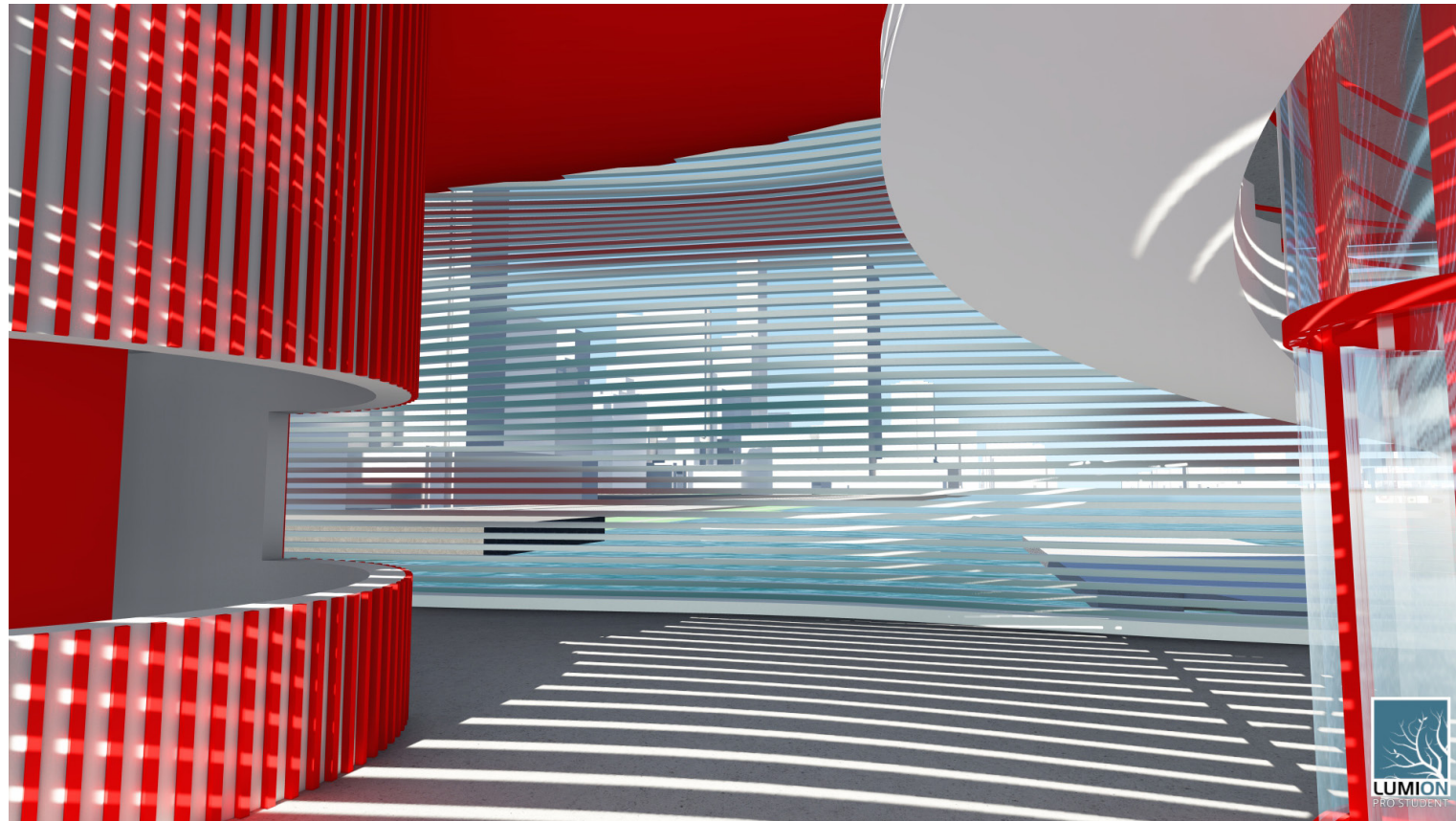
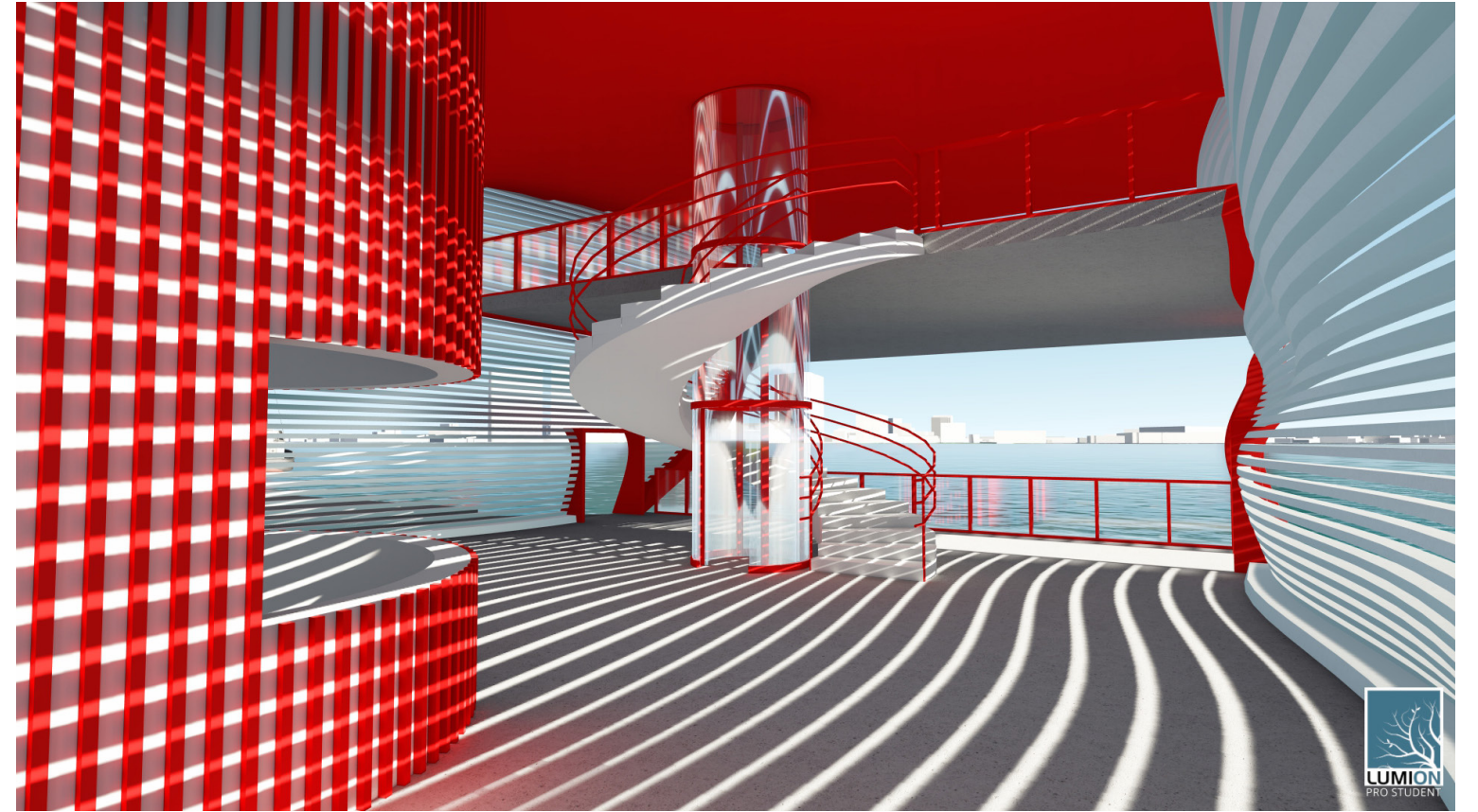
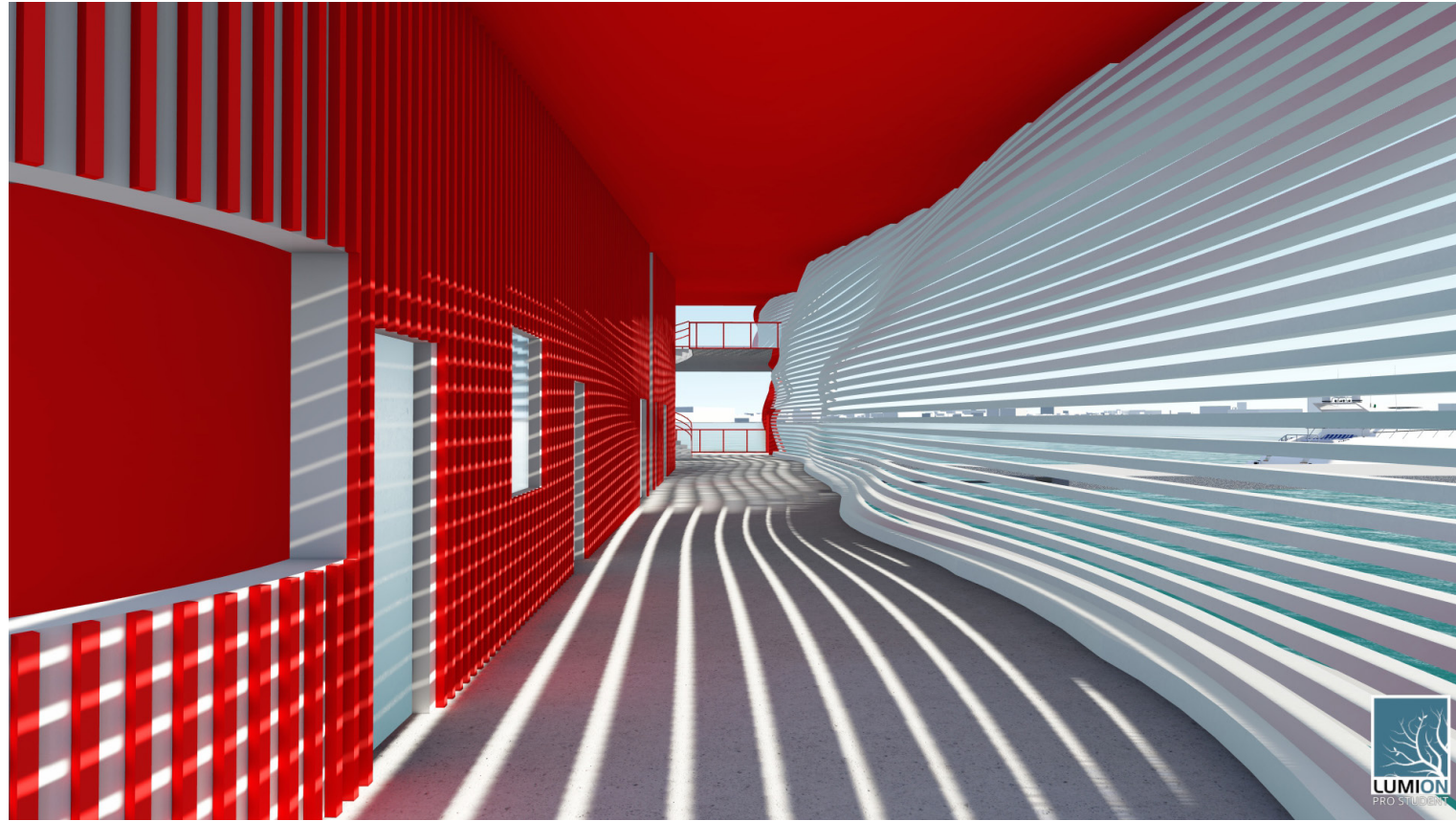


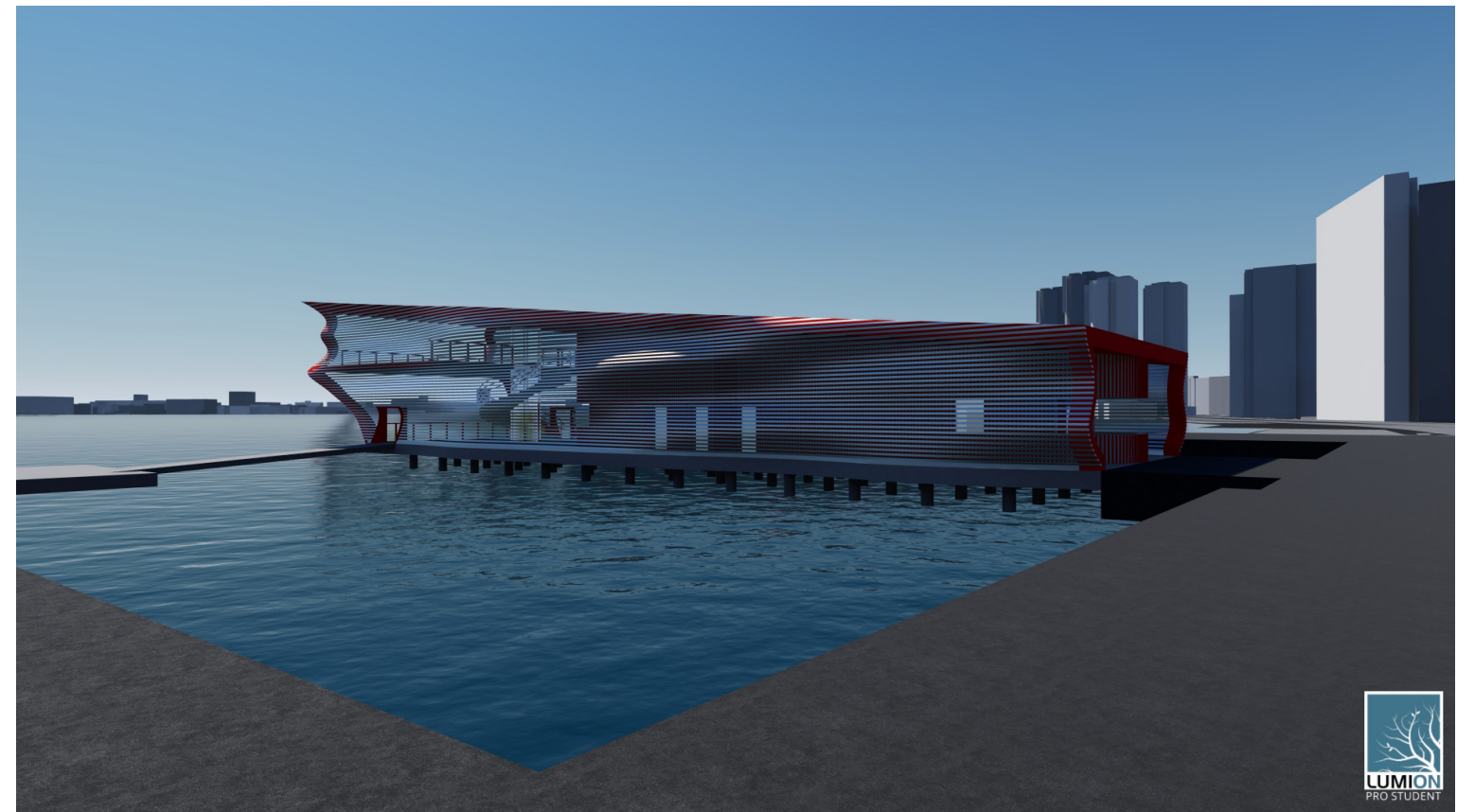
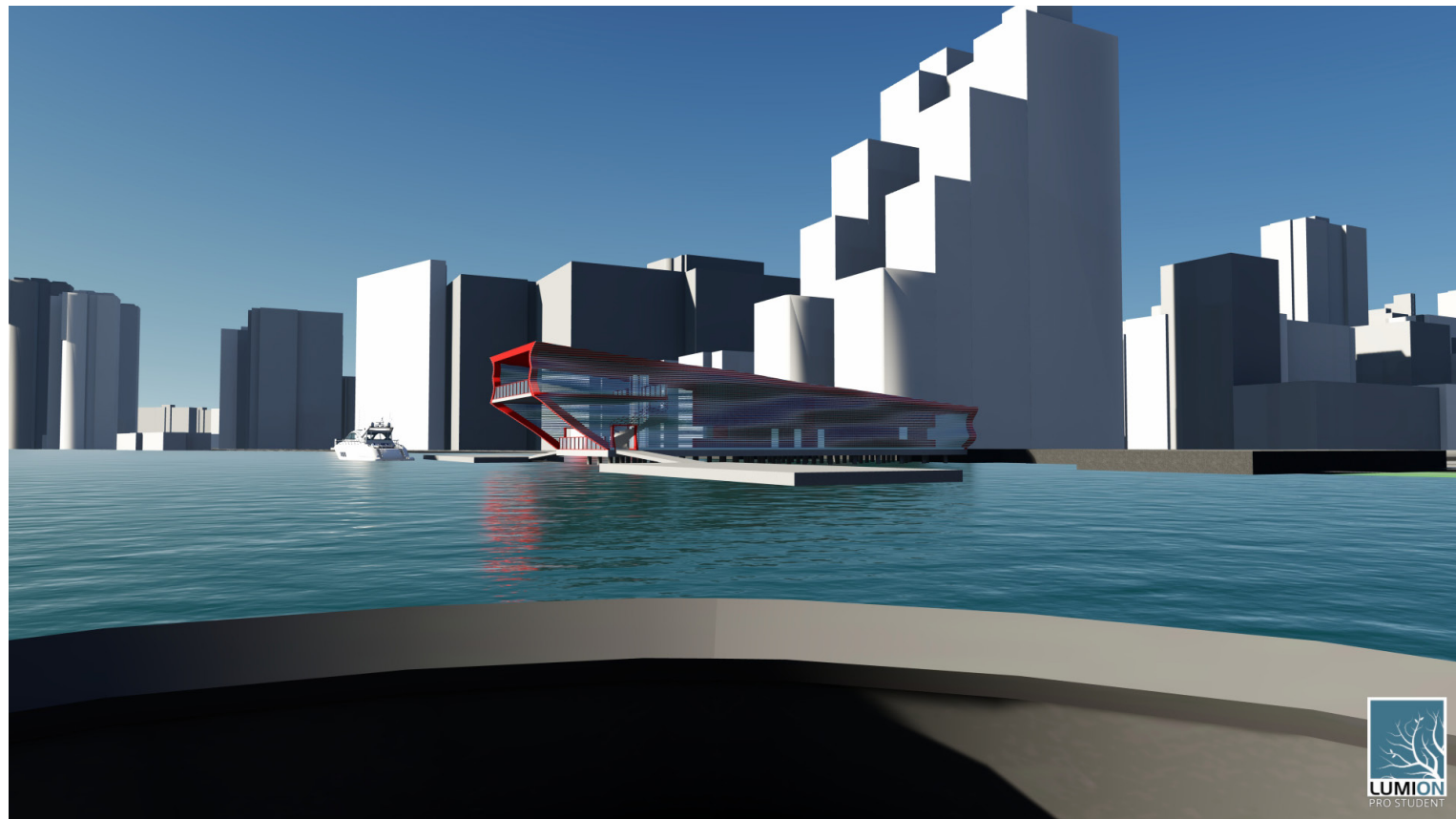
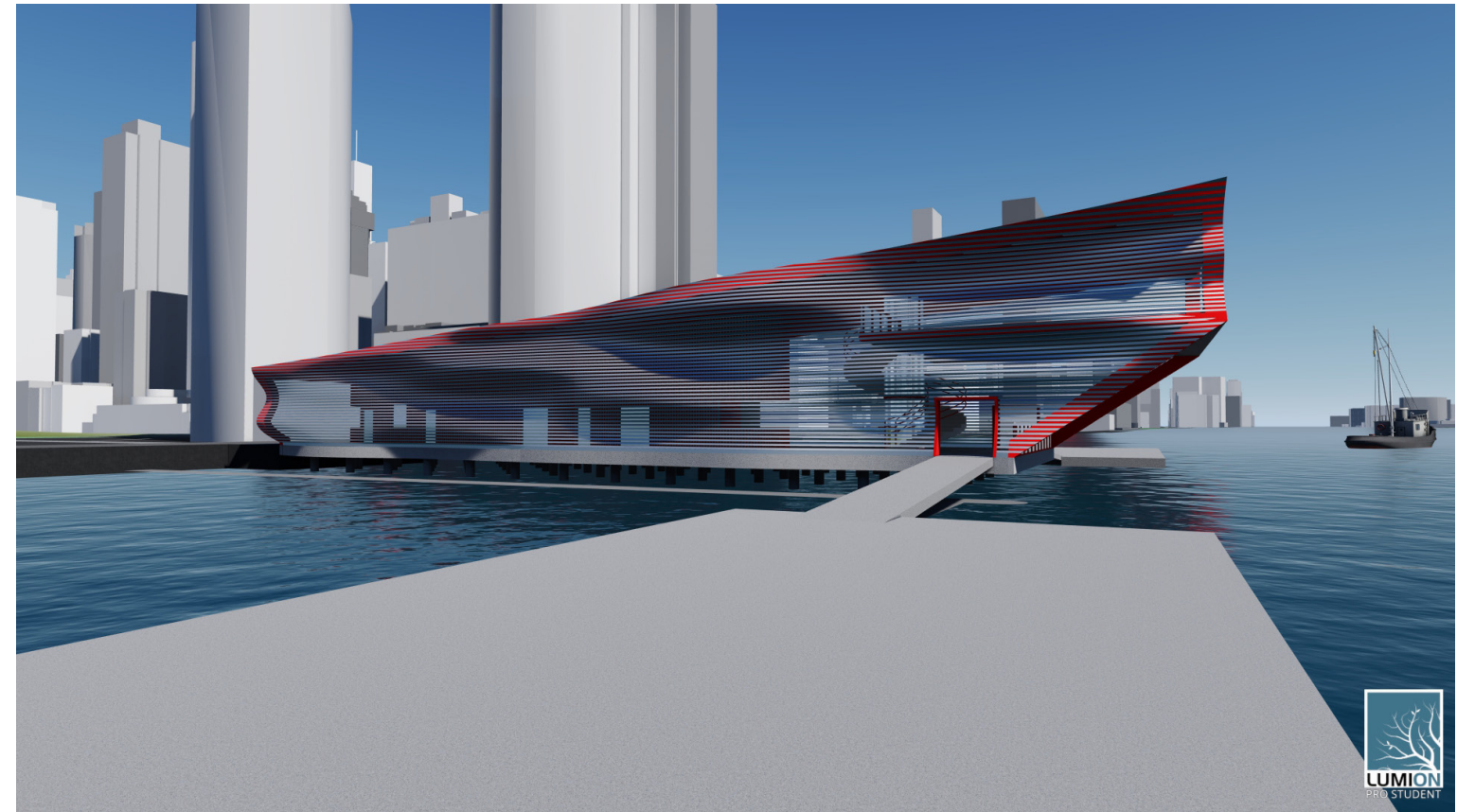
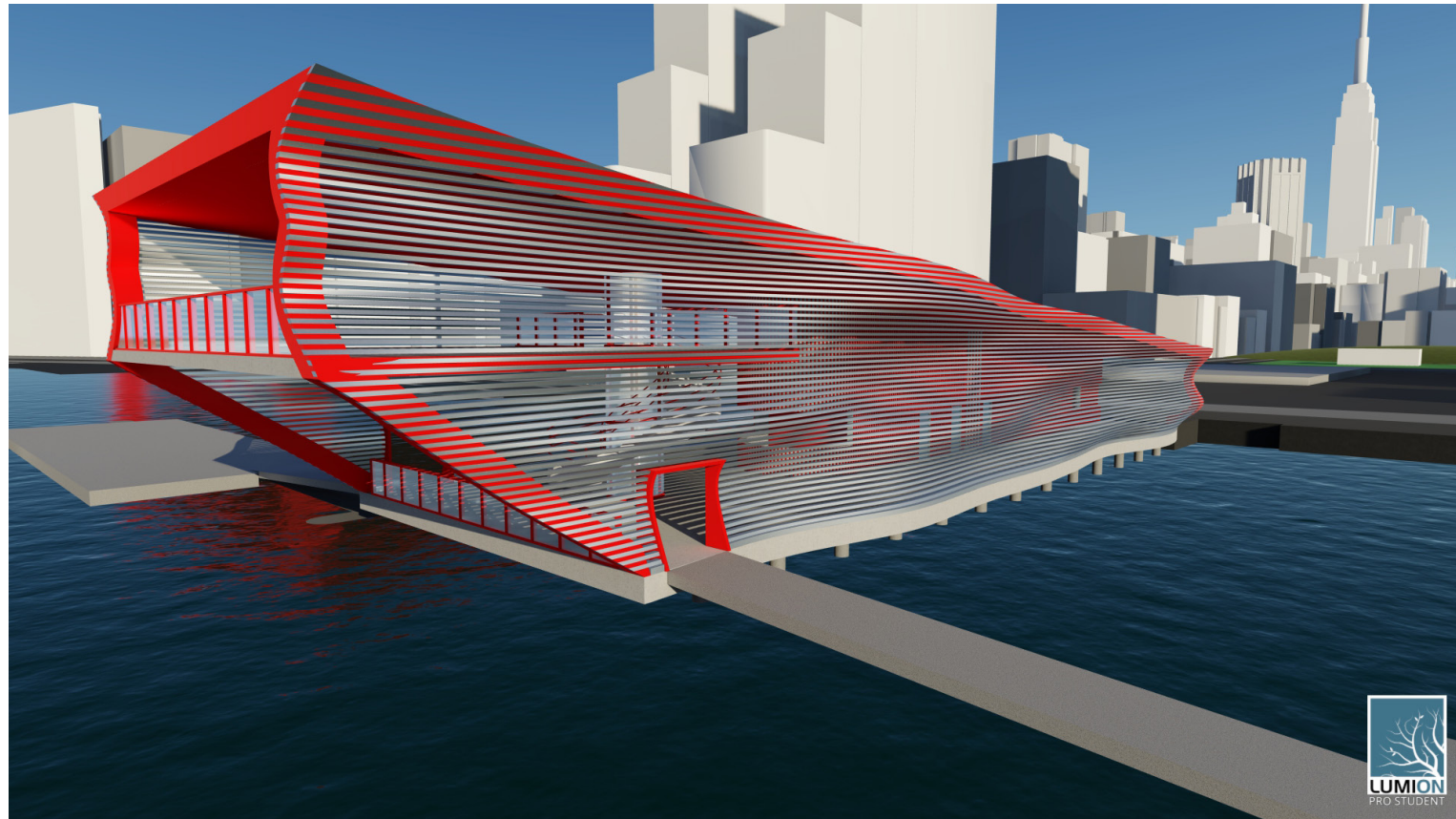
EAST/WEST SECTION
1/16"=1'-0"

CIRCULATION DIAGRAM

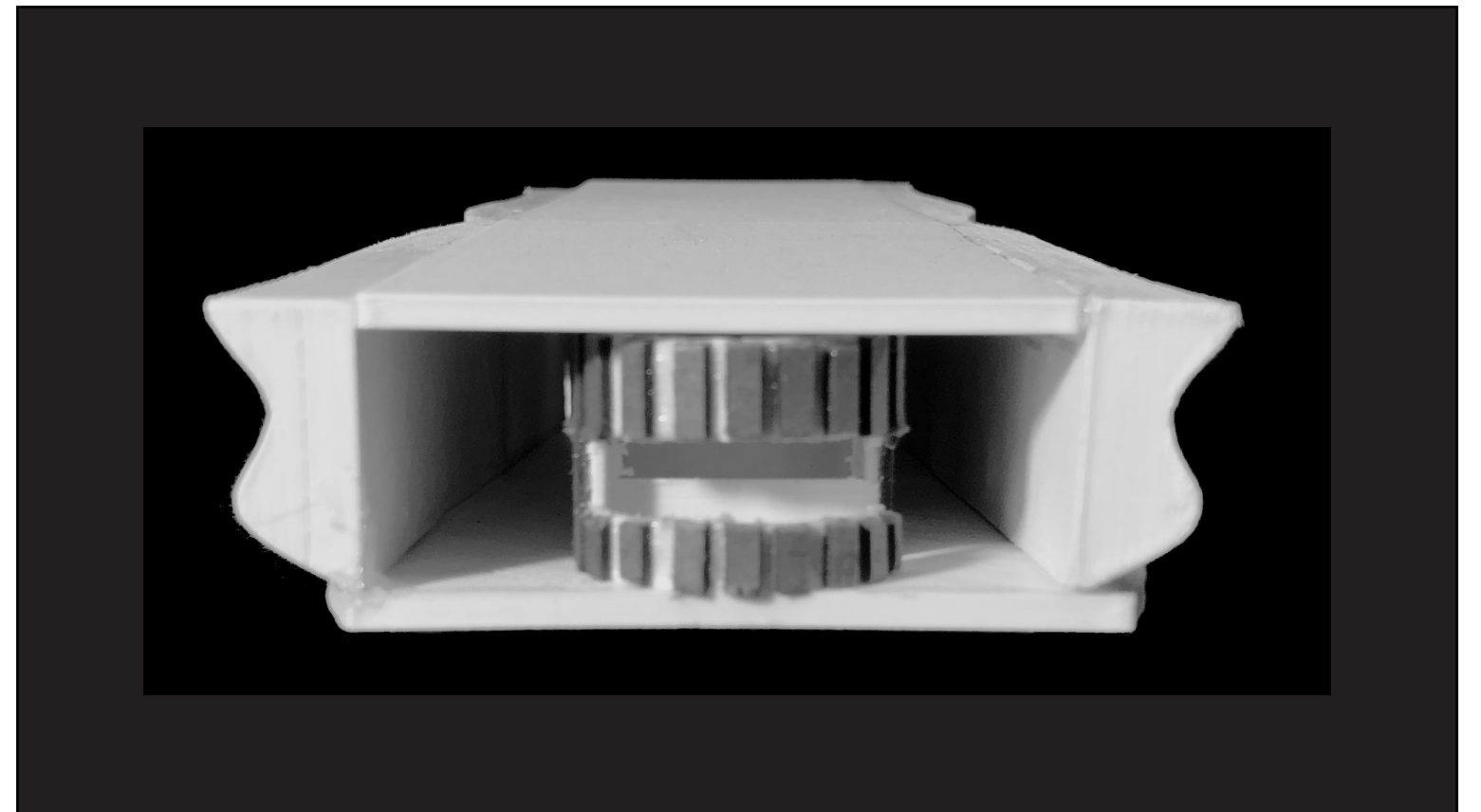
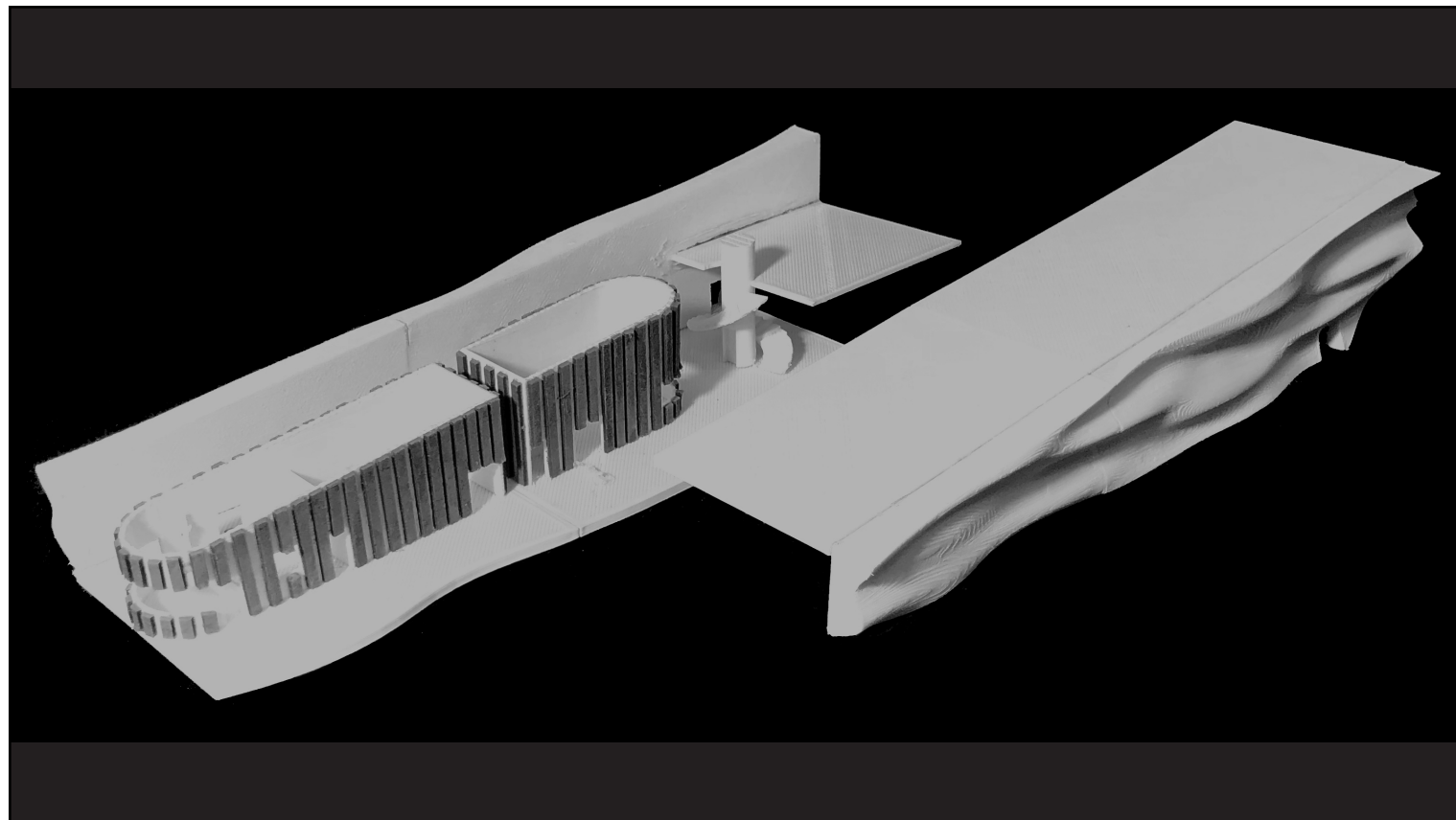
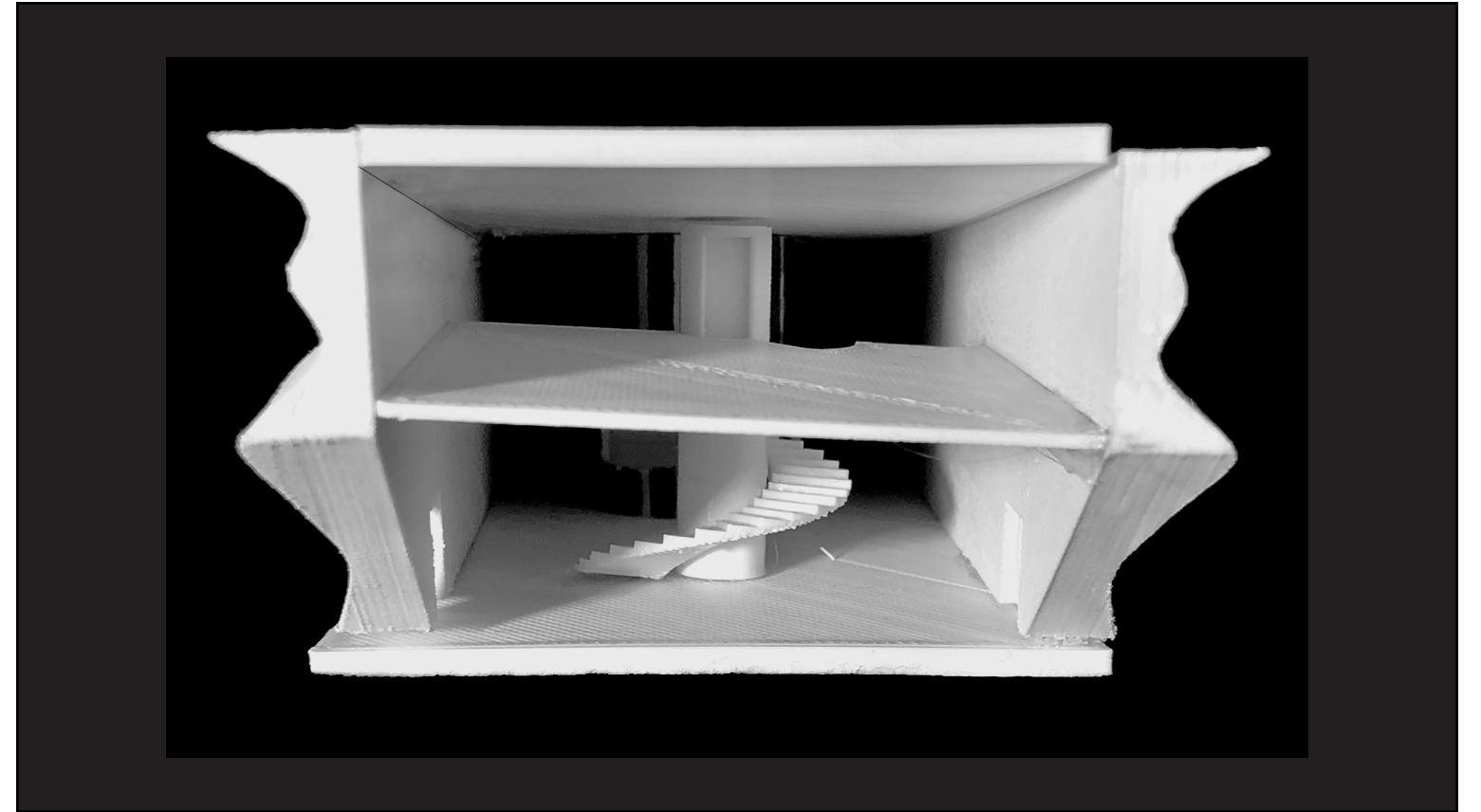
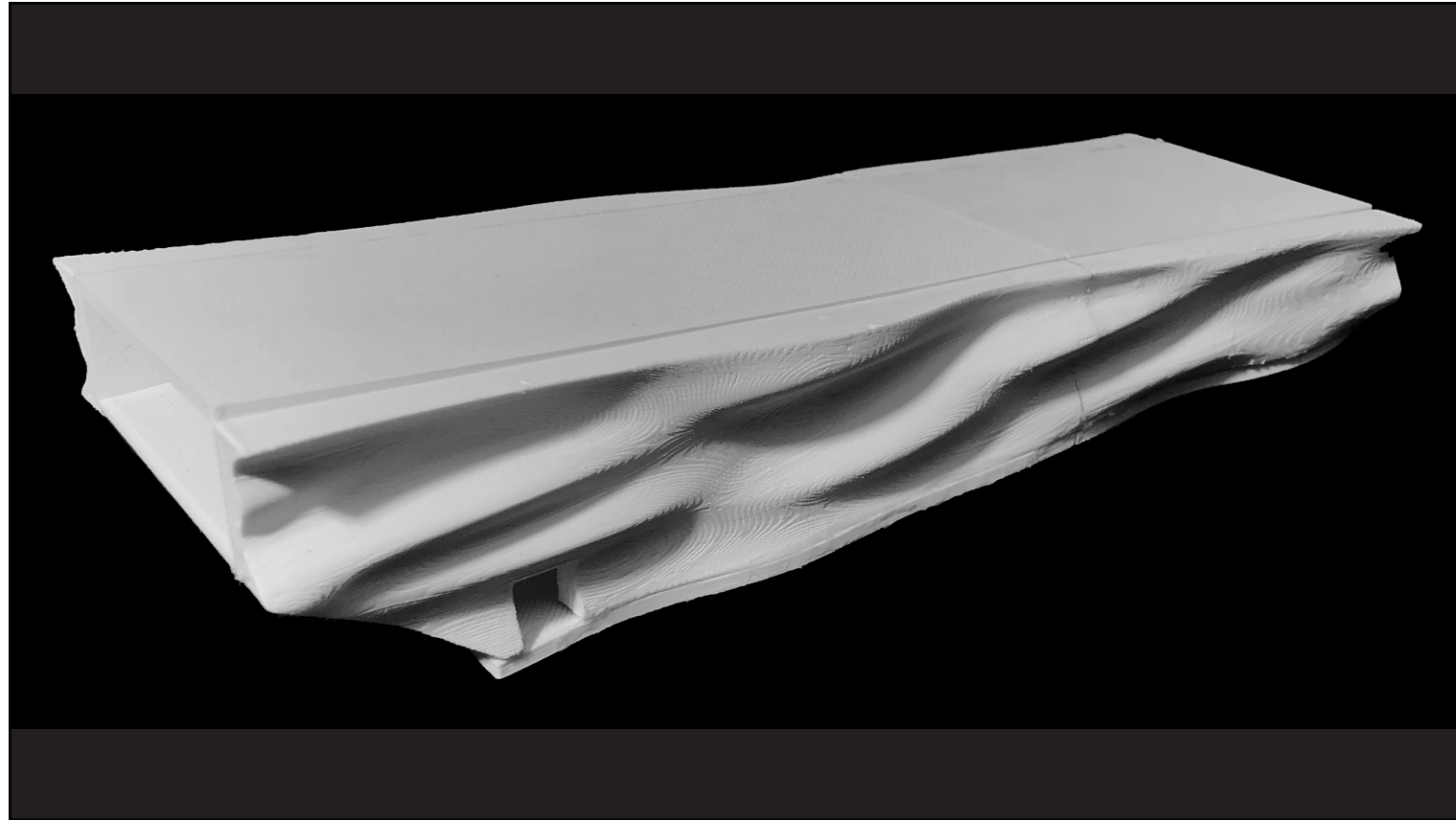


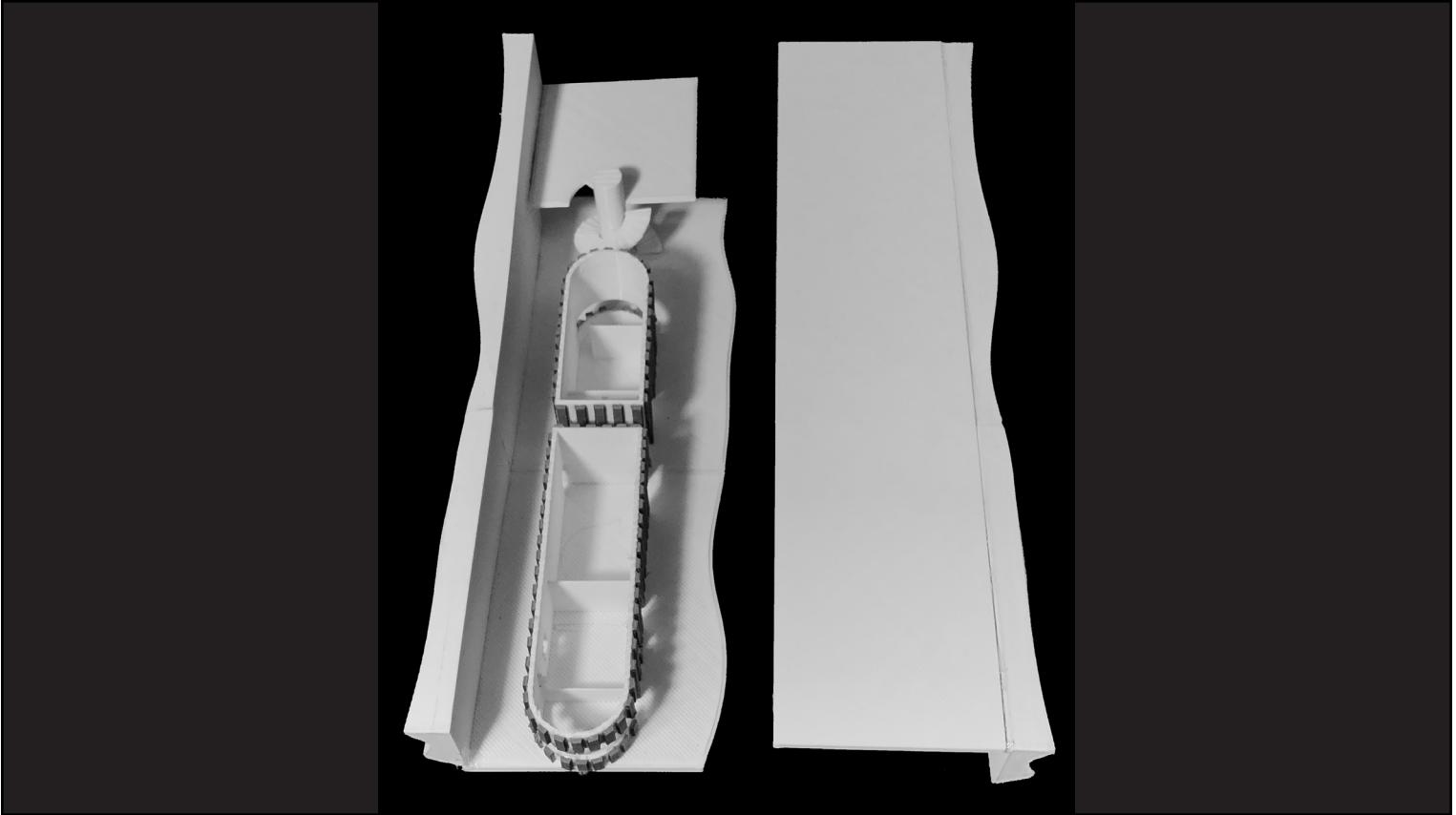
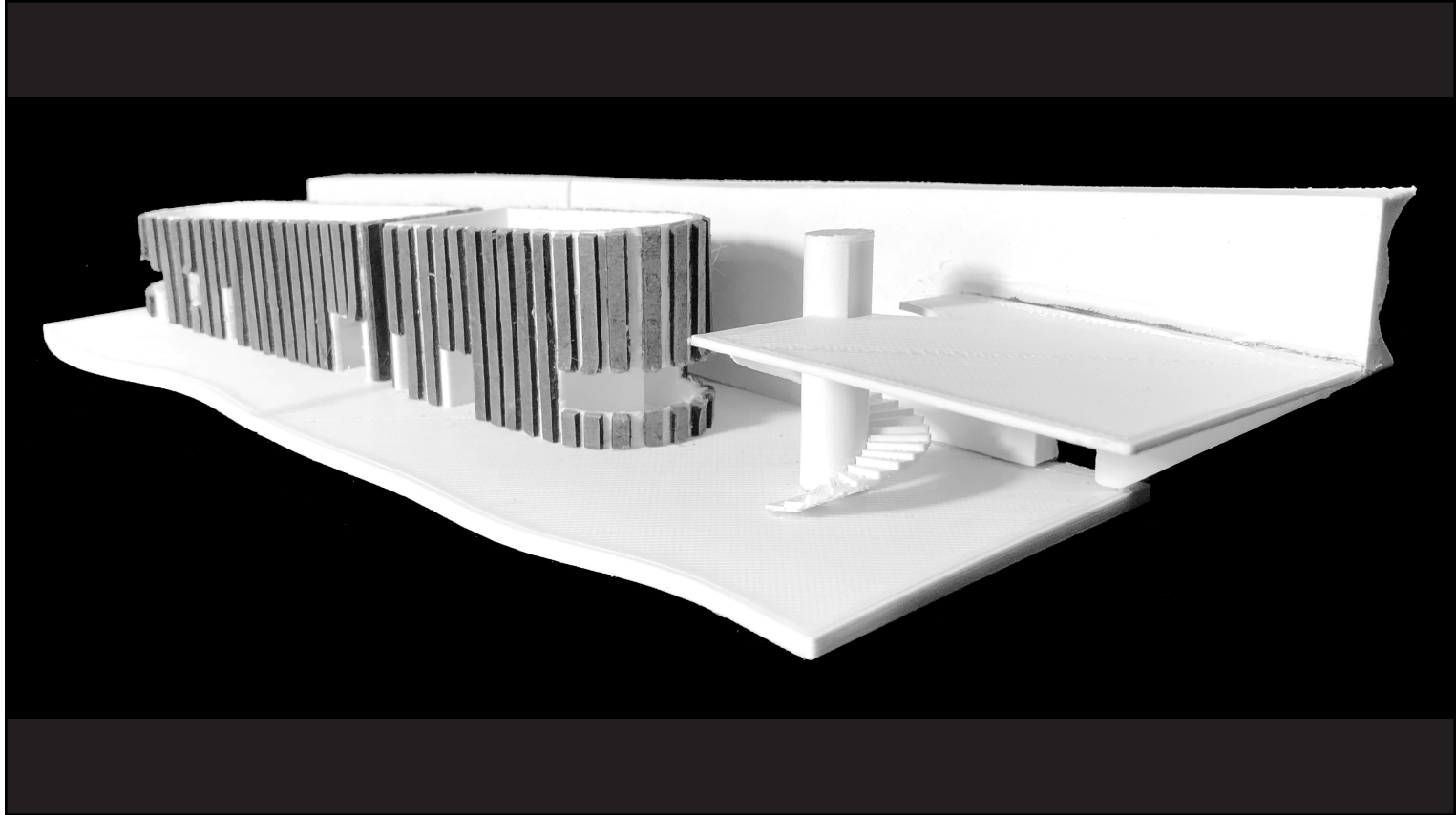
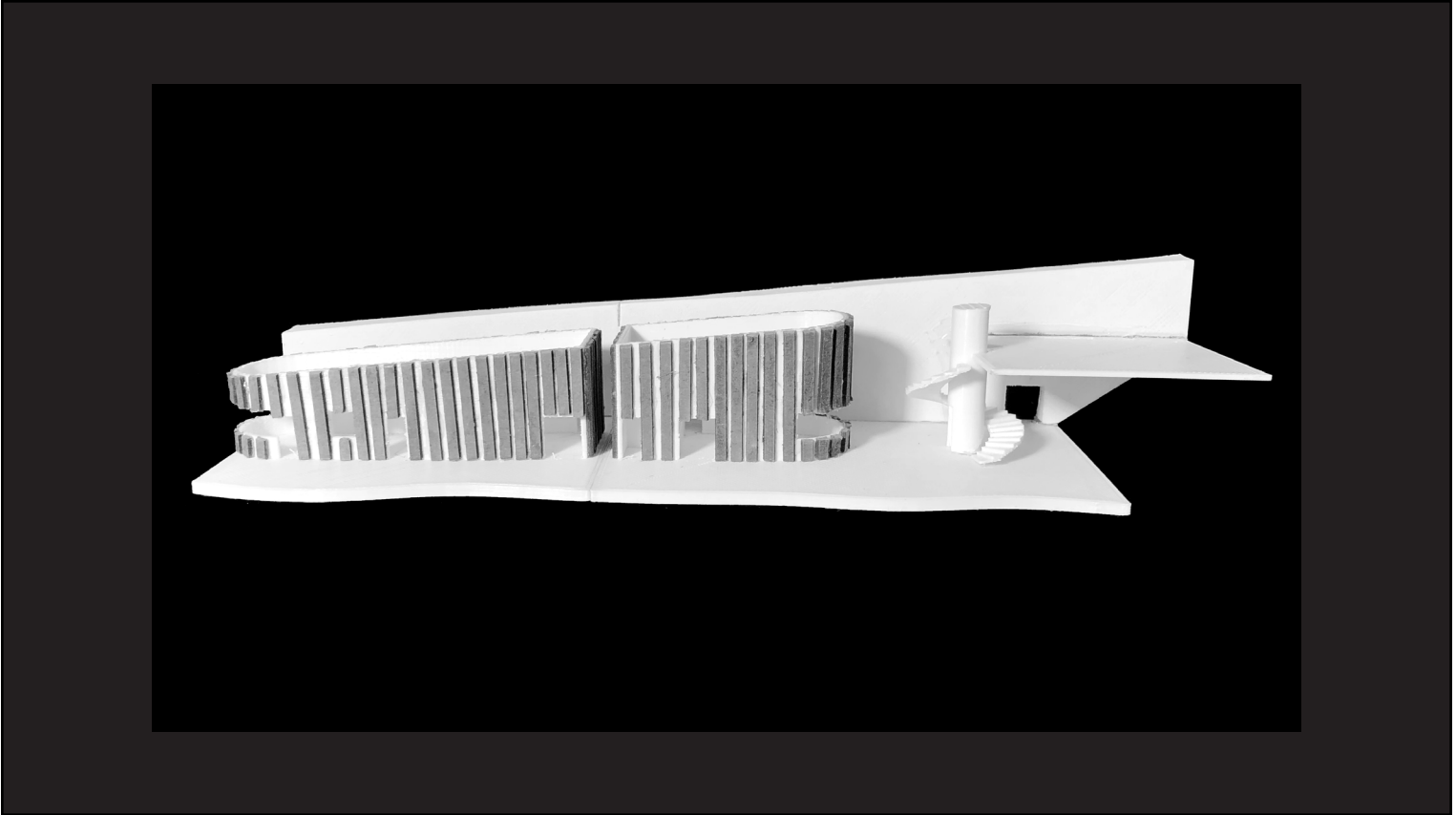
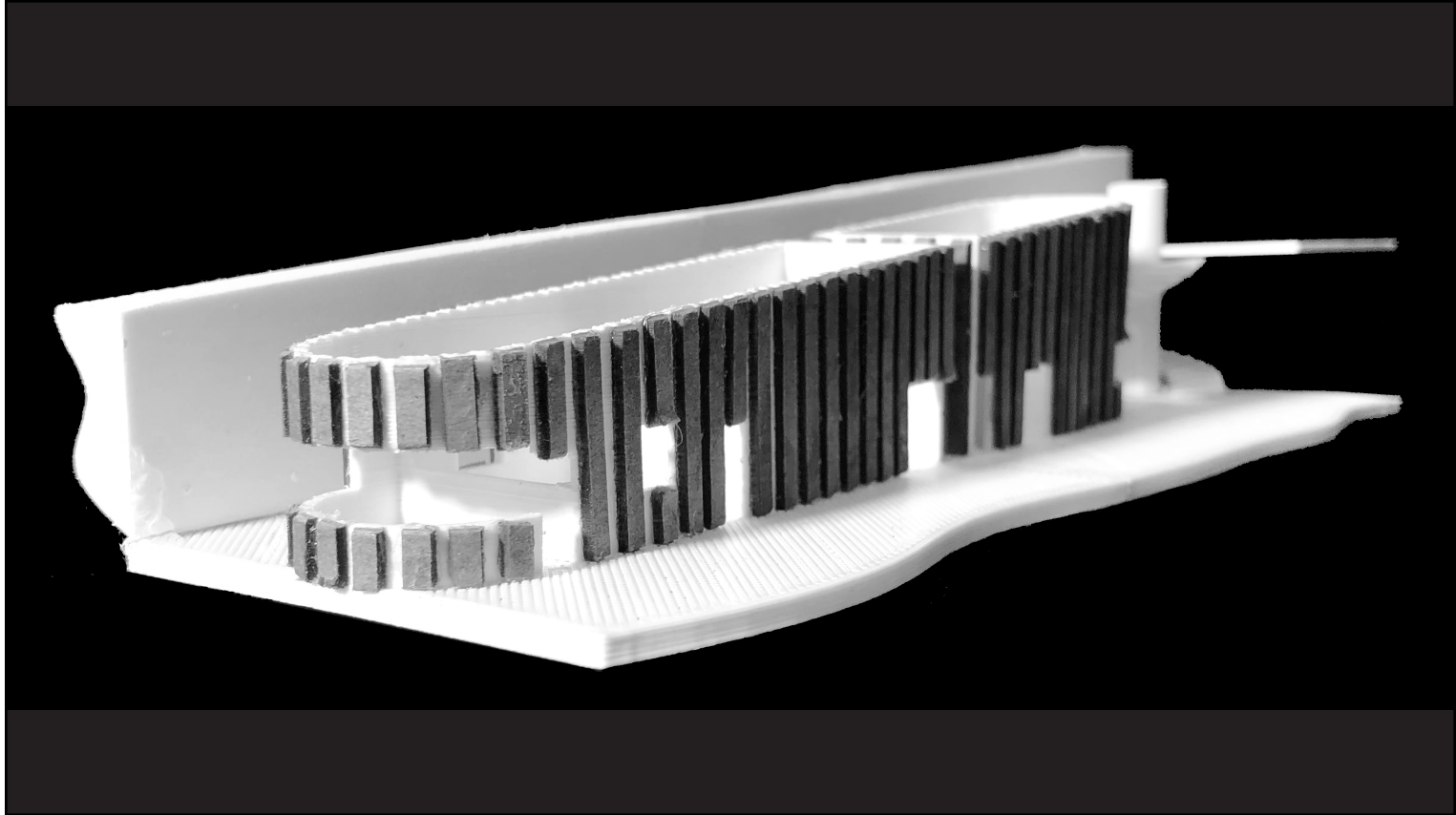
RENDERS



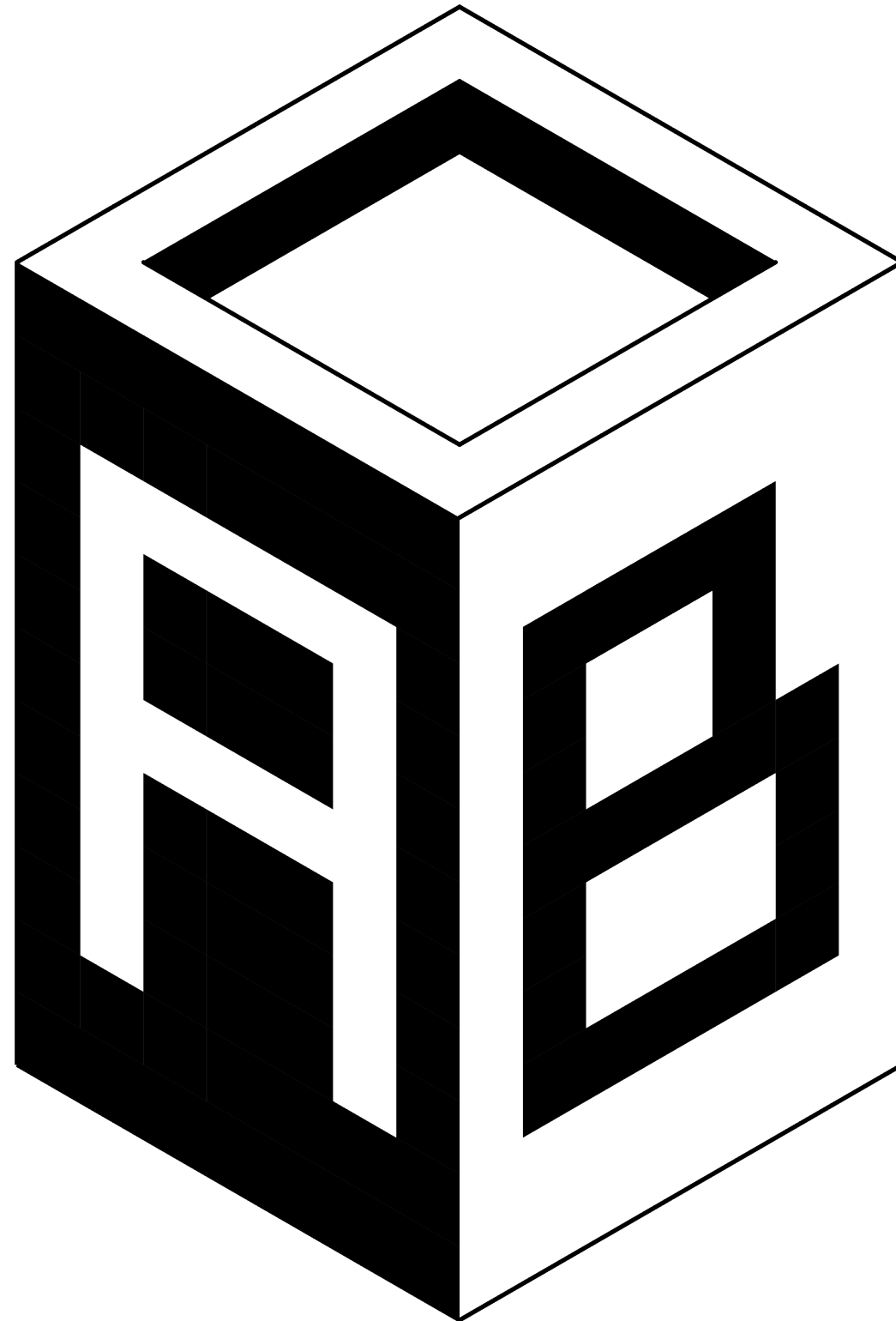


MODEL PHOTOS





WALK THROUGH CAN BE VIEWED AT
<http://aqibbhatti.com/e34-ferry-terminal/>



(917)-664-3784



AQIBBHATTI1@GMAIL.COM



WWW.AQIBBHATTI.COM



@AQIB_THE_ARCHITECT